

UNIVERSITY OF TWENTE ALUMNI REPORT 2024 FACULTY ST

UT.
FOR
LIFE

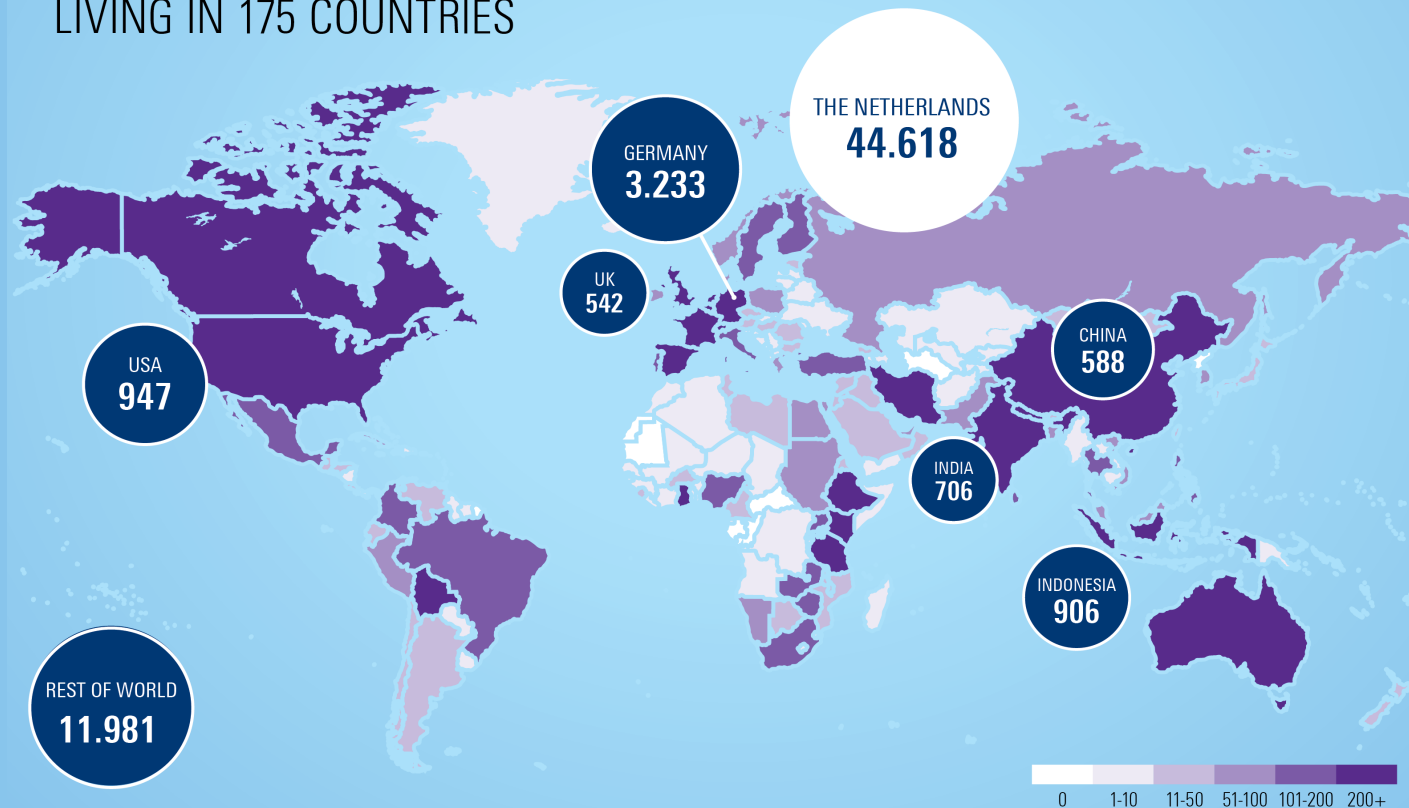


TABLE OF CONTENTS

UT.
FOR
LIFE

University of Twente Overview	Pg 2
Faculty ST Overview	Pg 3
Chemical Engineering	Pg 4
Applied Physics	Pg 5
Technical Medicine	Pg 6
Biomedical Engineering	Pg 7
Health Sciences	Pg 8
Advanced Technology	Pg 9
Alumni & Development Office	
Contacts	Pg 10
Alumni reports - Explanation of format	Pg 11

UNIVERSITY OF TWENTE. YOUR ACCESS TO A WORLDWIDE COMMUNITY OVER 63.000 ALUMNI LIVING IN 175 COUNTRIES



ALUMNI REPORT:

UNIVERSITY OF TWENTE

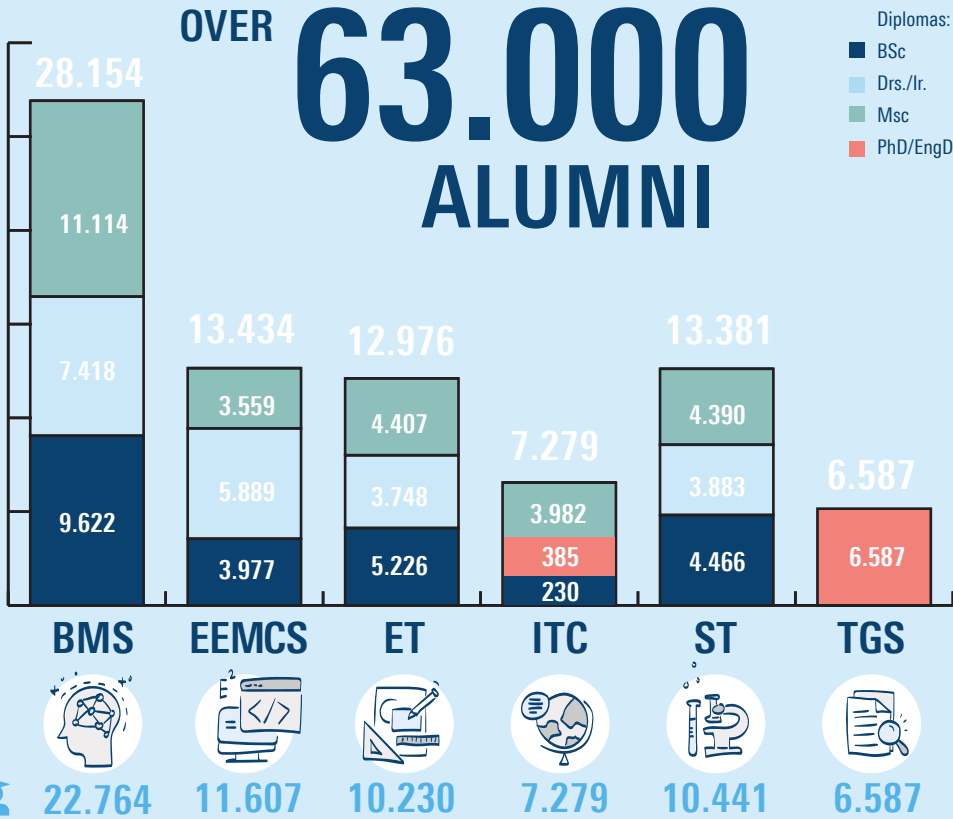
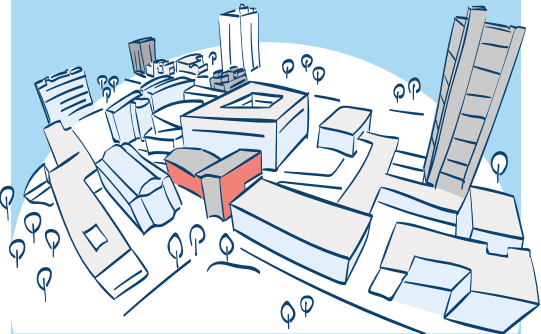
DATA AS OF
DECEMBER 31 2024

UNIVERSITY OF TWENTE.

5.3 years average
STUDY PERIOD

12% former student
BOARD MEMBERS

31% of all students are
FEMALE STUDENTS

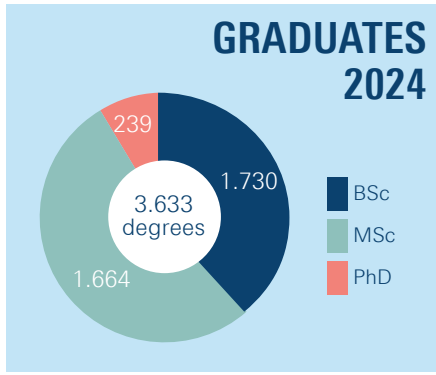
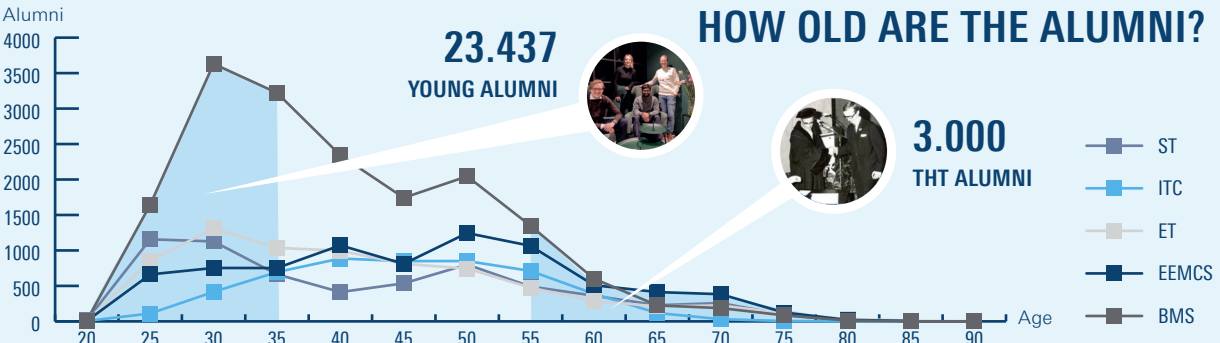


PROMINENT ALUMNI

-  **ANK BIJLEVELD-SCHOUTEN (PA 1983)**
Former Minister of Defense - The Netherlands (2017-2021)
-  **MARTIN VAN DEN BRINK (APH 1984)**
Former President and CTO ASML (1999-2024)
-  **JITSE GROEN (Former student BIT)**
Founder and CEO JUST Eat Takeaway.com (1999-present)
-  **AMON MURWIRA (GIS 2003)**
Minister of Higher Education, Science & Technology Development - Zimbabwe (2019-present)
-  **JEANNINE PEEK (IEM 1993)**
Managing Director Capgemini Netherlands (2020-present)
-  **PETER RIEZEBOS (COM 2013, PYS 2014)**
Visual Artist (2014-present)

MAJOR EMPLOYERS

ACCENTURE, ARCADIS, AKZONOBEL, ASML, CAPGEMINI, DELOITTE, DEMCON, DSM, IBM, ING, KPMG, KPN, NEDAP, NXP, OCE, PHILIPS, PWC, RABOBANK, SHELL, THALES, TNO, TOPICUS



We are in **175** COUNTRIES

15% Outside of the Netherlands

81% POST ADRESSES 41.419 NL / 10.006 INTL

71% EMAIL ADRESSES 45.197

KEEP IN TOUCH!

1.900 DONORS

All time alumni donors

998 followers

3.024 followers

17.707 members

Faculties: Behavioural, Management and Social Sciences (BMS), Engineering Technology (ET), Electrical Engineering, Mathematics and Computer Science (EEMCS), Geo-Information Science and Earth Observation (ITC), Science and Technology (ST), and Twente Graduate School (TGS).

utwente.nl/alumni

ALUMNI REPORT:

SCIENCE & TECHNOLOGY

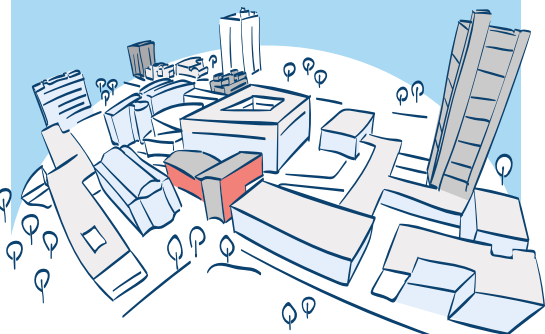
DATA AS OF
DECEMBER 31 2024

UNIVERSITY OF TWENTE.

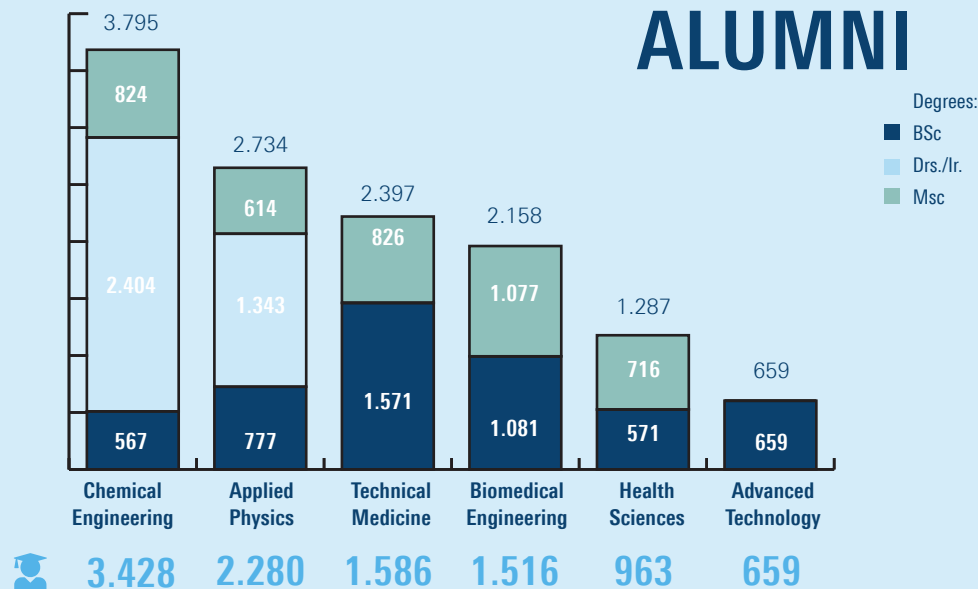
5.9 years average
STUDY PERIOD

18% former student
BOARD MEMBERS

33% of all students are
FEMALE STUDENTS



10.441
ALUMNI



PhD's with ST background: 944

ALUMNI HIGHLIGHTS



NIENKE BOERSMA (AP 1997)
Director Reporting at Achmea / Member Management (2019-present)



MEREL BOERS (TM 2014, PHD 2018)
Founder & Director at Nicolab (2023-present)



GERARD VAN HARTEN (CE 1977)
Former VP Operations Dow Benelux (2002-2012)



ANNEMIEKE NIJHOF (CE 1990)
General Director at Deltares (2020-present)



PAVLINA NANOU (CE 2007, PHD 2018)
Co-founder & COO at TORWASH (2020-present)

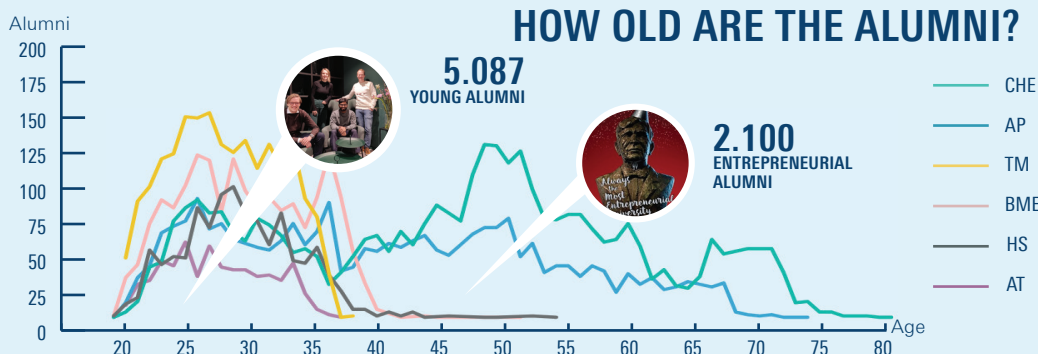


PER SLYCKE (AP 1999)
Founder & CEO at Loop Robots (2020-present), Co-founder Xsens

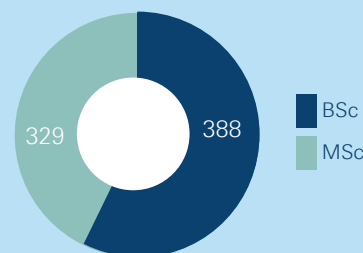
MAJOR EMPLOYERS



AKZONOBEL, ASML, DEMCON, DSM, FRIESLANDCAMPINA, NOURION, PHILIPS, SABIC, SHELL, TEIJIN ARAMID, TNO, TU DELFT, UMC UTRECHT



GRADUATES 2024



ALUMNI ARE IN 59 COUNTRIES

Germany 144
United States 72
Belgium 44
Switzerland 37
Spain 28
United Kingdom 24



5% Outside of the Netherlands

KEEP IN TOUCH!

84% POST ADDRESSES 8.804 addresses

75% EMAIL ADDRESSES 7.819 addresses

408
DONORS

BEST PRACTICES

BME Career Cafe
C.T.S.G. Alembic (CHE) Alumni Day
S.V. Arago (AP) Alumni Day

Study programs: Chemical Engineering (CHE), Applied Physics (AP), Technical Medicine (TM), Biomedical Engineering (BME), Health Sciences (HS) and Advanced Technology (AT) are depicted in the age graph. Other studies included in the total alumni numbers are Nanotechnology and Civil Engineering, but those studies have fewer than 300 alumni.

utwente.nl/alumni

ALUMNI REPORT:

CHEMICAL SCIENCE & ENGINEERING

DATA AS OF
DECEMBER 31 2024

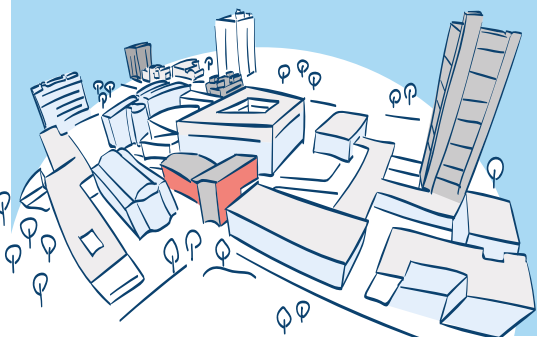
UNIVERSITY OF TWENTE.

1964 year of first
STUDENT

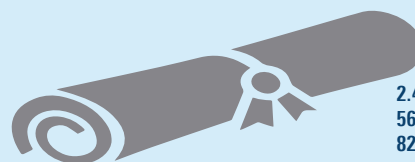
1968 year of first
GRADUATE

16% former student
BOARD MEMBERS

19% of all alumni are
FEMALE



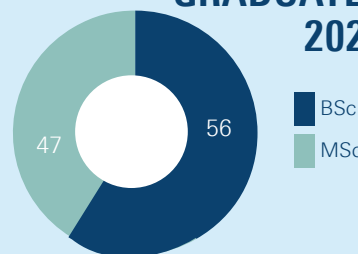
3.428
ALUMNI



2.404 Ir.
567 BSc
824 MSc

PhD's with CHE background: 381

GRADUATES 2024



ALUMNI HIGHLIGHTS



MARIETTE BONTKES (CHE 2001)
Technical Director Western Europe at Givaudan (2016-present)



SANDER KLIJNSTRA (CHE 2002)
Sr. Policy Advisor on Waste Management and Circular Economy at Gemeente Den Haag (2017-present)



JEALEMY GALINDO (CHE 2007, PhD 2012)
Manager at Monitor Deloitte (2023-present)



IVO LANSBERGEN (CHE 1998)
President Animal Nutrition & Health at dsfmirmenich (2019-present)



JULIA PEPER (CHE 2021)
Process Engineer at Toray Advanced Composites (2023-present)

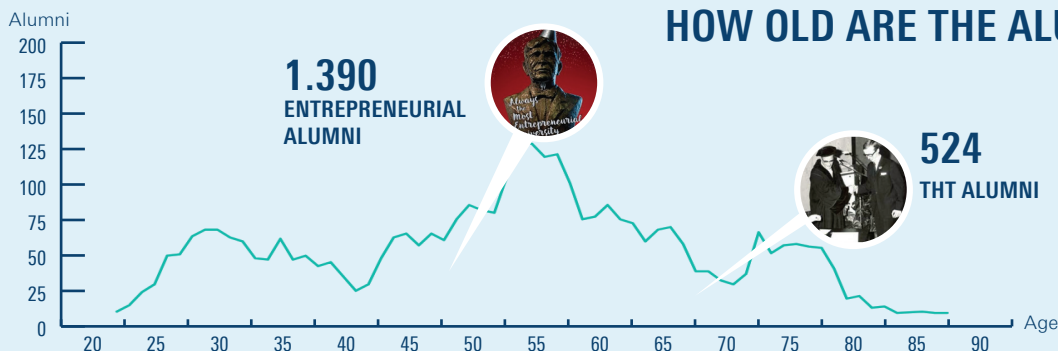


WALTER TOBÉ (CHE 1991)
Consultant Circular Economy at Tauw (2021-present)

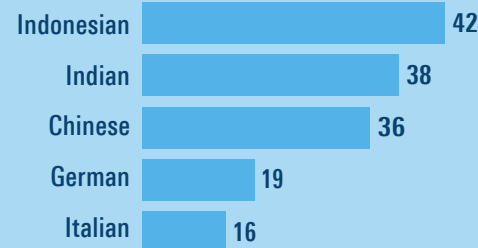
MAJOR EMPLOYERS



AKZONOBEL, ASML, COVESTRO,
DSM-FIRMENICH, FRIESLAND-
CAMPINA, LYONDELLBASELL,
NOBIAN, RVO, SASOL, SHELL, TNO,
WORLEY, ZETON



TOP 5 INTERNATIONALS



87%
are Dutch

✉ ✉ ✉ ✉ ✉ ✉ ✉ ✉ ✉ ✉ **KEEP IN TOUCH!**

78% POST ADDRESSES 2.680 addresses **57%** EMAIL ADDRESSES 1.944 addresses

2023 NATIONAL ALUMNI SURVEY DATA

This MSc is a good basis for entry to the labour market*: 4.18 (3.88)**

Time from graduation to first job (in months): 3.2 (2.0)**

Avg. gross monthly salary: €2.998 (€2.806)**

Would graduates choose the same study again? Yes: 78% (87% in 2021)

*on a scale from 1 to 5; ** figure in parentheses is the UT average

Study program: Chemical Science & Engineering (CHE)

utwente.nl/alumni

ALUMNI REPORT:

APPLIED PHYSICS

DATA AS OF
DECEMBER 31 2024

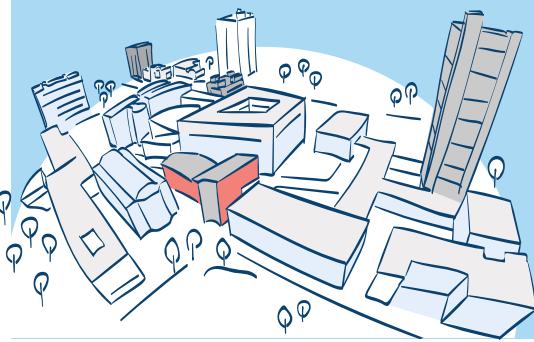
UNIVERSITY OF TWENTE.

1969 year of first STUDENT

1973 year of first GRADUATE

22% former student BOARD MEMBERS

11% of all alumni are FEMALE

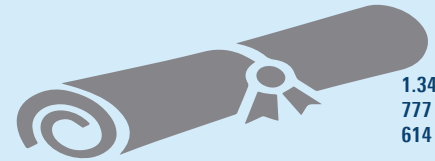


DID YOU KNOW THAT ..

Maurice te Plate (AP 1993), system engineer at the European Space Agency, worked from 2012 to 2024 as a System Integration and Test Manager for the NASA James Webb Telescope Project.



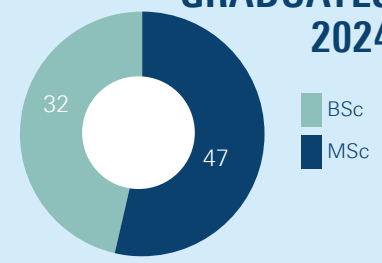
2.280
ALUMNI



1.343 Ir.
777 BSc
614 MSc

PhD's with AP background: 381

GRADUATES 2024



ALUMNI HIGHLIGHTS



STEF CARELSEN (AP 2013)
Coordinator / Specialist Inspector at Authority for Nuclear Safety and Radiation Protection (2019-present)



REGINA FREED (AP 1996)
Vice-President, Alx Solutions at Applied Materials (2021-present)



AICO TROEMAN (AP 2007)
Managing Director & Partner at Boston Consulting Group (2018-present)



PIETER-PAUL LEROU (AP 2002, PhD 2007)
Chief Technology Officer at DEMCON (2018-present)



ELISE LÖBKER (AP 2015)
Senior Data Science Manager at Adevinia (2022-present)

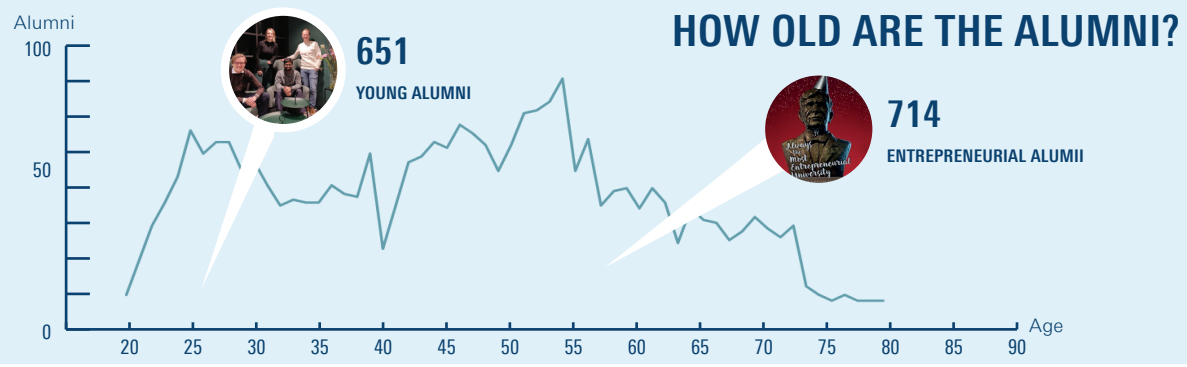


WILLEM STRIJBOSCH (AP 2000)
Vice-President Product for Maps at TomTom (2021-present)

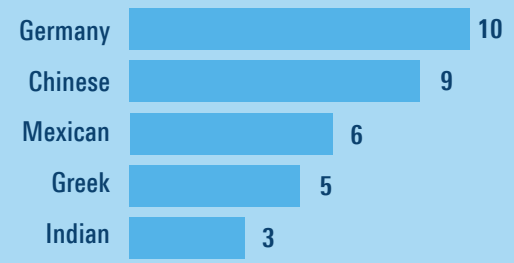
MAJOR EMPLOYERS



ASML, CANON, DNV, IMEC, NIKHEF, PHILIPS, PRORAIL, SAXION, TNO, UMC, UNIVERSITEIT UTRECHT, UNIVERSITEIT VAN AMSTERDAM, TNO, WINDESHEIM



TOP 5 INTERNATIONALS



96%
are Dutch

KEEP IN TOUCH!

82% POST ADDRESSES 1.859 addresses

67% EMAIL ADDRESSES 1.535 addresses

2023 NATIONAL ALUMNI SURVEY DATA

This MSc is a good basis for entry to the labour market*: 4.80 (3.88)**
Time from graduation to first job (in months): 2.8 (2.0)**
Avg. gross monthly salary: €3.295 (€2.806)**
Would graduates choose the same study again? Yes: 93% (75% in 2021)
*on a scale from 1 to 5; ** figure in parentheses is the UT average

Study program: Applied Physics (AP)

utwente.nl/alumni

ALUMNI REPORT:

TECHNICAL MEDICINE

DATA AS OF
DECEMBER 31 2024

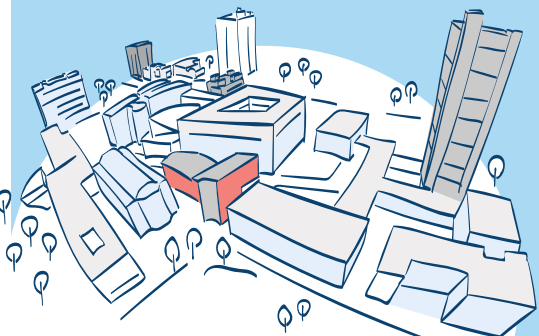
UNIVERSITY OF TWENTE.

2003 year of first
STUDENT

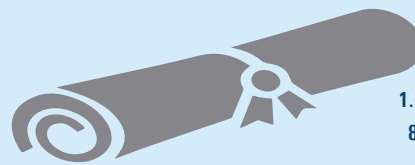
2006 year of first
GRADUATE

21% former student
BOARD MEMBERS

62% of all alumni are
FEMALE



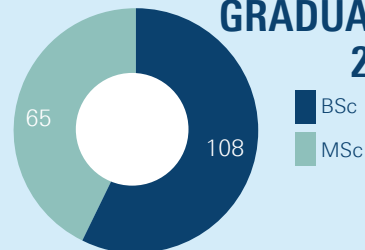
1.586
ALUMNI



1.571 BSc
826 MSc

PhD's with TM background: 51

**GRADUATES
2024**



ALUMNI HIGHLIGHTS



BAUKE ANNINGA (TM 2013)
Investment Director at M Ventures
(2023-present)



JASON DOPPENBERG (TM 2012)
Coordinator Organ Preservation and Regeneration Unit at Leiden University Medical Center
(2017-present)



WIEKE HAAKMA (TM 2013)
Program Manager at STZ
(2018-present)



ERIK HUIZINGA (TM 2017)
Technical Physician x Developing Developer at Nedap healthcare
(2018-present)



MAARTEN KROES (TM 2011)
Clinical Research Manager - Interventional Imaging at Canon Medical Systems Europe
(2018-present)

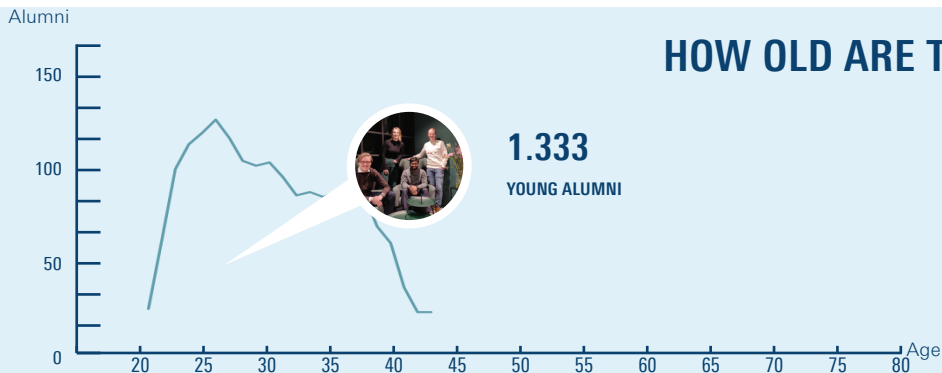


LEX VAN LOON (TM 2013)
Senior PostDoc at Wilhelmina Kinderziekenhuis
(2023-present)

MAJOR EMPLOYERS



AMSTERDAM UMC, ST. ANTONIUS
ZIEKENHUIS, ERASMUS MC, UMC
GRONINGEN, LEIDEN UMC, MEDISCH
SPECTRUM TWENTE, RADBOUD UMC,
RIJNSTATE, UTRECHT UMC, ZGT



NATIONALITIES

99%
are Dutch



✉ ✉ ✉ ✉ ✉ ✉ ✉ ✉ ✉ ✉ **KEEP IN TOUCH!**

92% POST ADDRESSES 1.463 addresses **93%** EMAIL ADDRESSES 1.478 addresses

2023 NATIONAL ALUMNI SURVEY DATA

This MSc is a good basis for entry to the labour market*: 3.94 (3.88)**

Time from graduation to first job (in months): 2.9 (2.0)**

Avg. gross monthly salary: €3.205 (€2.806)**

Would graduates choose the same study again? Yes: 94% (71% in 2021)

*on a scale from 1 to 5; ** figure in parentheses is the UT average

Study program: Technical Medicine (TM)

utwente.nl/alumni

ALUMNI REPORT:

BIOMEDICAL ENGINEERING

DATA AS OF
DECEMBER 31 2024

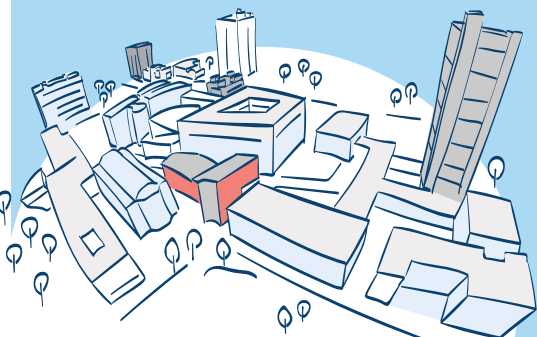
UNIVERSITY OF TWENTE.

2002 year of first
STUDENT

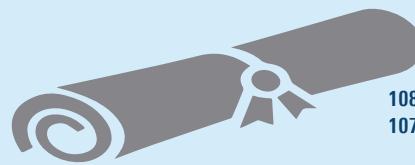
2004 year of first
GRADUATE

21% former student
BOARD MEMBERS

51% of all alumni are
FEMALE



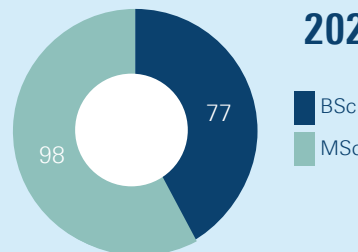
1.516
ALUMNI



1081 BSc
1077 MSc

PhD's with BME background: 82

GRADUATES 2024



ALUMNI HIGHLIGHTS



RENE AARNINK (BME 1991)
Founder and CEO at SonicPrecision
(2024-present)



ANOUK LEUNISSEN (BME 2020)
Researcher Agro-robotics at Wageningen
University & Research (2022-present)



EWOUT JONKER (BME 2010)
Senior Mechatronic System Engineer at
Demcon (2012-present)



HILDUR SÓLEY SVEINSDÓTTIR (BME 2014)
Biomedical Engineer at 3Z Pharmaceuticals
(2016-present)



JASPER VAN WEERD (BME 2010, PhD 2014)
Founder & Managing director Lipocoat BV
(2016-present)

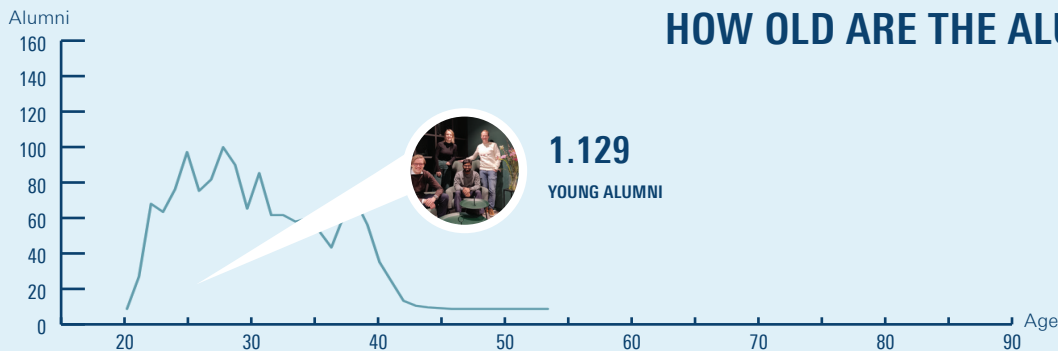


WEI ZHONG (BME 2017)
Global Audit Data Analyst at Heineken
(2023-present)

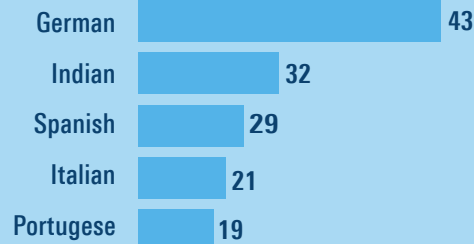
MAJOR EMPLOYERS



AMSTERDAM UMC, ASML, BAAT
MEDICAL, DEMCON, ERASMUS MC,
LEIDEN UMC, MEDISCH SPECTRUM
TWENTE, PHILIPS, TNO, TOPICUS, UMC
UTRECHT



TOP 5 INTERNATIONALS



85%
are Dutch

                                   **KEEP IN TOUCH!**

88% POST ADDRESSES 1.339 addresses **91%** EMAIL ADDRESSES 1.383 addresses

2023 NATIONAL ALUMNI SURVEY DATA

This MSc is a good basis for entry to the labour market*: 3.19 (3.88)**

Time from graduation to first job (in months): 2.4 (2.0)**

Avg. gross monthly salary: €2.783 (€2.806)**

Would graduates choose the same study again? Yes: 68% (68% in 2021)

*on a scale from 1 to 5; ** figure in parentheses is the UT average

Study program: Biomedical Engineering (BME)

utwente.nl/alumni

ALUMNI REPORT:

HEALTH SCIENCES

DATA AS OF
DECEMBER 31 2024

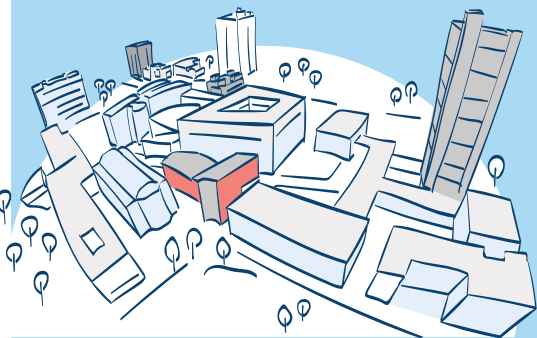
UNIVERSITY OF TWENTE.

2003 year of first
STUDENT

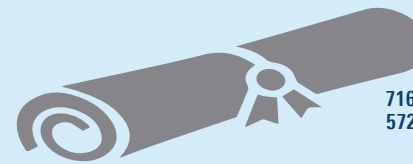
2006 year of first
GRADUATE

11% former student
BOARD MEMBERS

76% of all alumni are
FEMALE



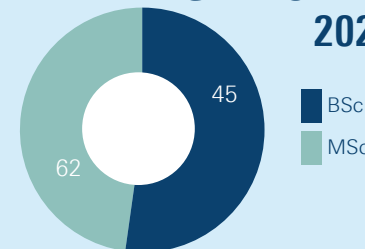
963
ALUMNI



716 MSc
572 BSc

PhD's with HS background: 23

GRADUATES
2024



ALUMNI HIGHLIGHTS



GÜLSEN ÖCAL (HS 2017)
Communication and Documentation
Specialist at Nedap Healthcare (2024-present)



MARGO KOSTER (HS 2012)
Proposition lead infectious diseases at
Topicus.Healthcare (2022-present)



ANNEMIEKE SCHOLTEN (HS 2010)
Team lead Analysis at Menzis
(2020-present)



TIMON SIBMA (HS 2008)
Manager Dep. Research, Dev. & Intl. Affairs at
Zorginstituut Nederland (2022-present)



LAURA STEENTJES (HS 2015)
Senior policy worker curative care at
Ministerie van Volksgezondheid, Welzijn en
Sport (2019-present)



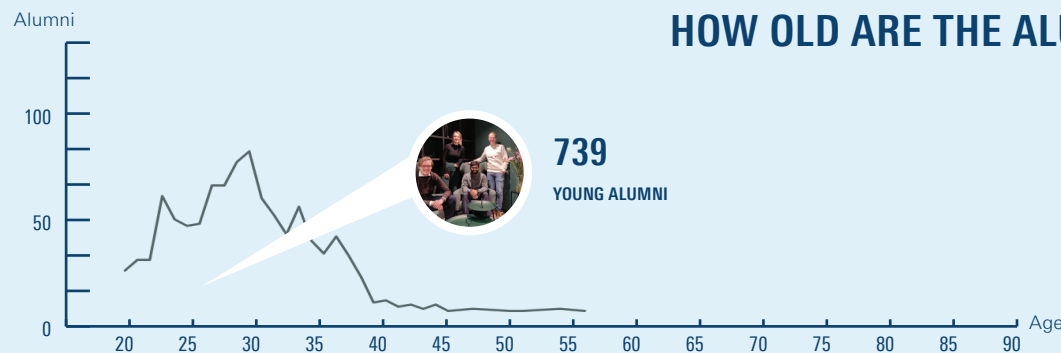
DOUWE WILLINK (HS 2016)
Clinic Manager - Bergman Clinics
(2023-present)

MAJOR EMPLOYERS

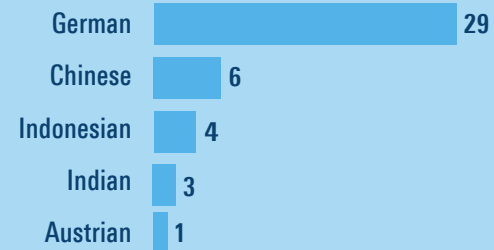


AMSTERDAM UMC, GGD, IKNL, LEIDEN
UMC, MEDISCH SPECTRUM TWENTE,
RIJNSTATE, ROESSINGH RESEARCH AND
DEVELOPMENT, SAXION, TOPICUS, UMC
UTRECHT, ZGT

HOW OLD ARE THE ALUMNI?



TOP 5 INTERNATIONALS



94%
are Dutch

✉ ✉ ✉ ✉ ✉ ✉ ✉ ✉ ✉ ✉ **KEEP IN TOUCH!**

91% POST ADDRESSES 873 addresses **91%** EMAIL ADDRESSES 7879 addresses

2023 NATIONAL ALUMNI SURVEY DATA

This MSc is a good basis for entry to the labour market*: 4.17 (3.88)**

Time from graduation to first job (in months): 0.8 (2.0)**

Avg. gross monthly salary: €2.562 (€2.806)**

Would graduates choose the same study again? Yes: 68% (87% in 2021)

*on a scale from 1 to 5; ** figure in parentheses is the UT average

Study program: Health Sciences (HS)

utwente.nl/alumni

ALUMNI REPORT:

ADVANCED TECHNOLOGY

DATA AS OF
DECEMBER 31 2024

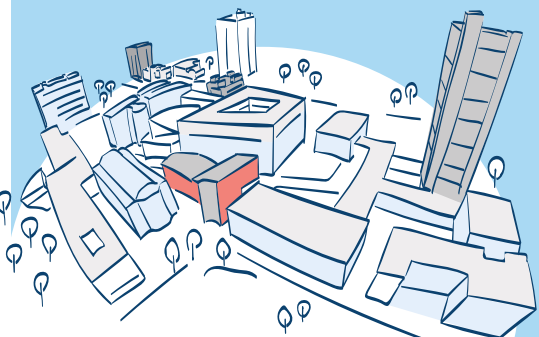
UNIVERSITY OF TWENTE.

2004 year of first
STUDENT

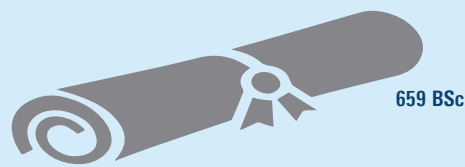
2007 year of first
GRADUATE

17% former student
BOARD MEMBERS

16% of all alumni are
FEMALE



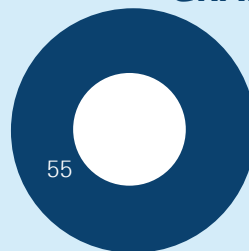
659
ALUMNI



659 BSc

PhD's with AT background: 21

**GRADUATES
2024**



BSc

ALUMNI HIGHLIGHTS



EVA VAN BEURDEN (AT 2018, ME 2020)
Engineer at Cooli Sustainable Energy Solutions (2021-present)



WOUT OUDE ELFERINK (AT 2014)
Computer Vision Engineer at Vitestro (2022-present)



SIMON PIETERSEN (AT 2016)
Brewery Manager at Royal Swinkels (2024-present)



PIM ROSSEN (AT 2008, BA 2009)
Principal at Kearney (2021-present)



DAAN DE RUITER (AT 2014, AM 2016)
Software Engineer at Lightspeed (2022-present)

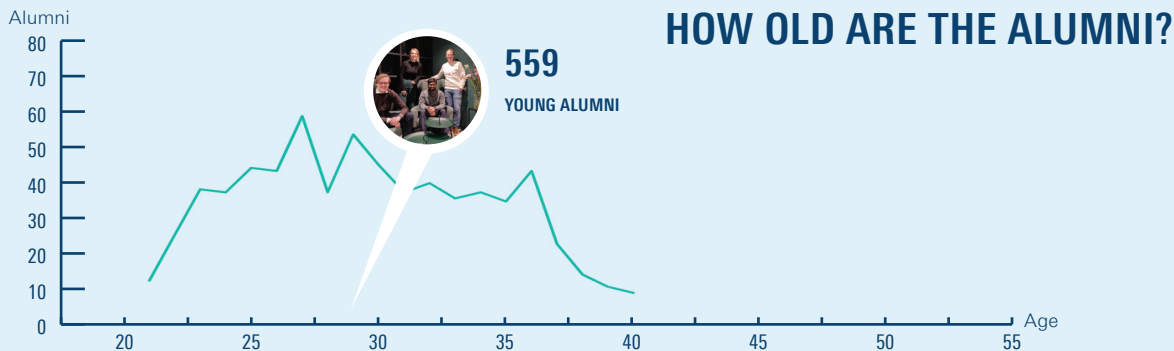


WESSEL STRAATMAN (AT 2012, SC 2014)
Advisor Asset Management at Coteq Netbeheer (2020-present)

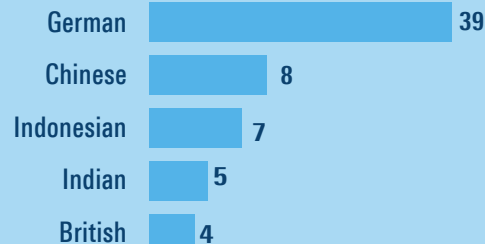
MAJOR EMPLOYERS



ASML, CONTOUR ADVANCED SYSTEMS,
DEMCON, ENTRNCE, HYDRIVEN, PHILIPS,
RABOBANK, SAXION, THALES, TNO,



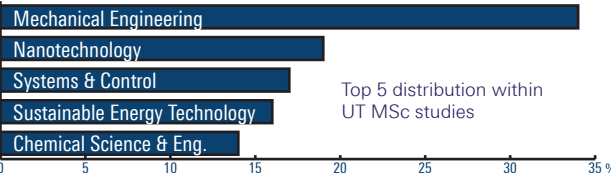
TOP 5 INTERNATIONALS



84%
are Dutch

KEEP IN TOUCH!

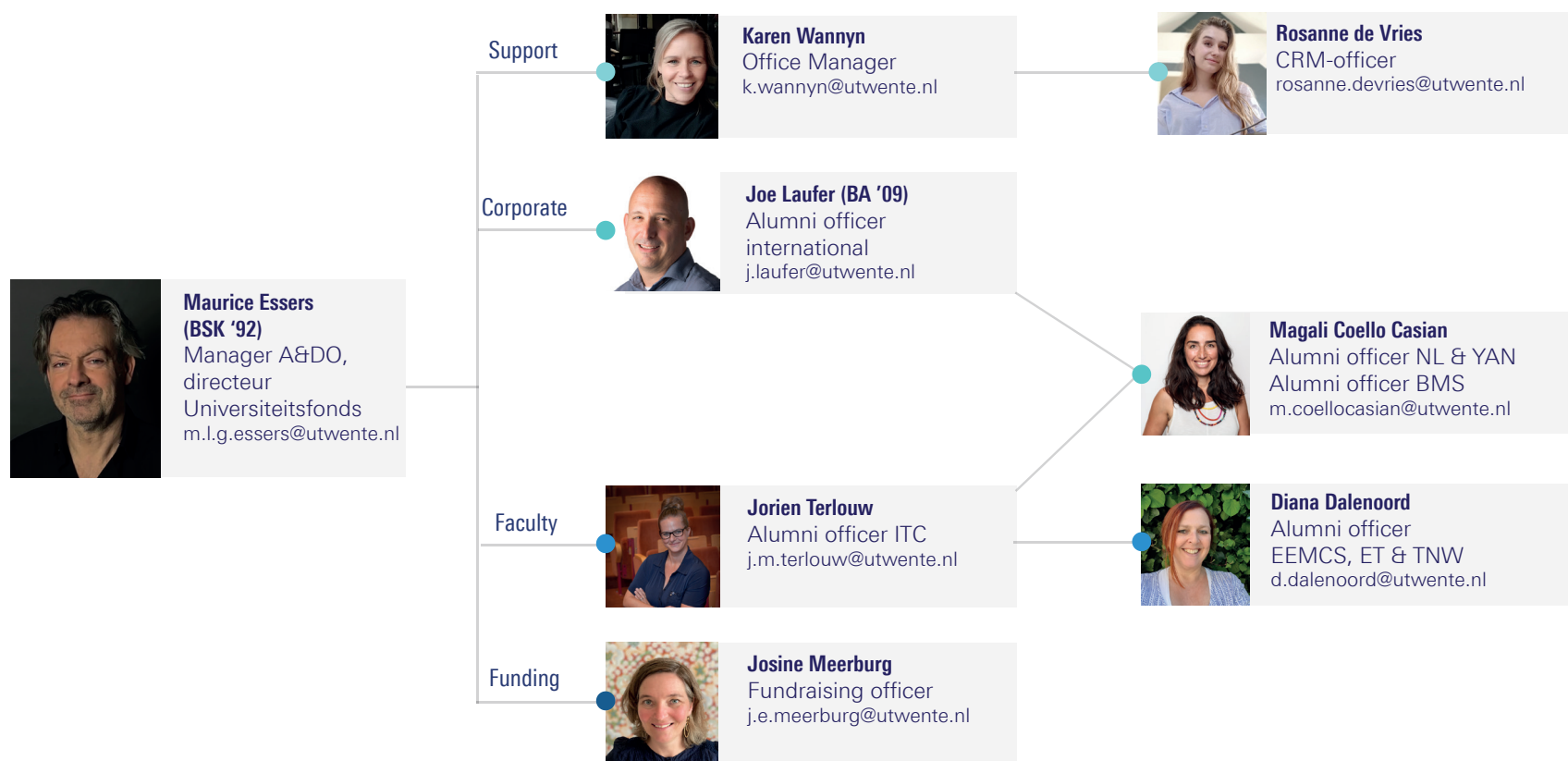
91% POST ADDRESSES 602 addresses
92% EMAIL ADDRESSES 609 addresses



Study program: Advanced Technology (AT)

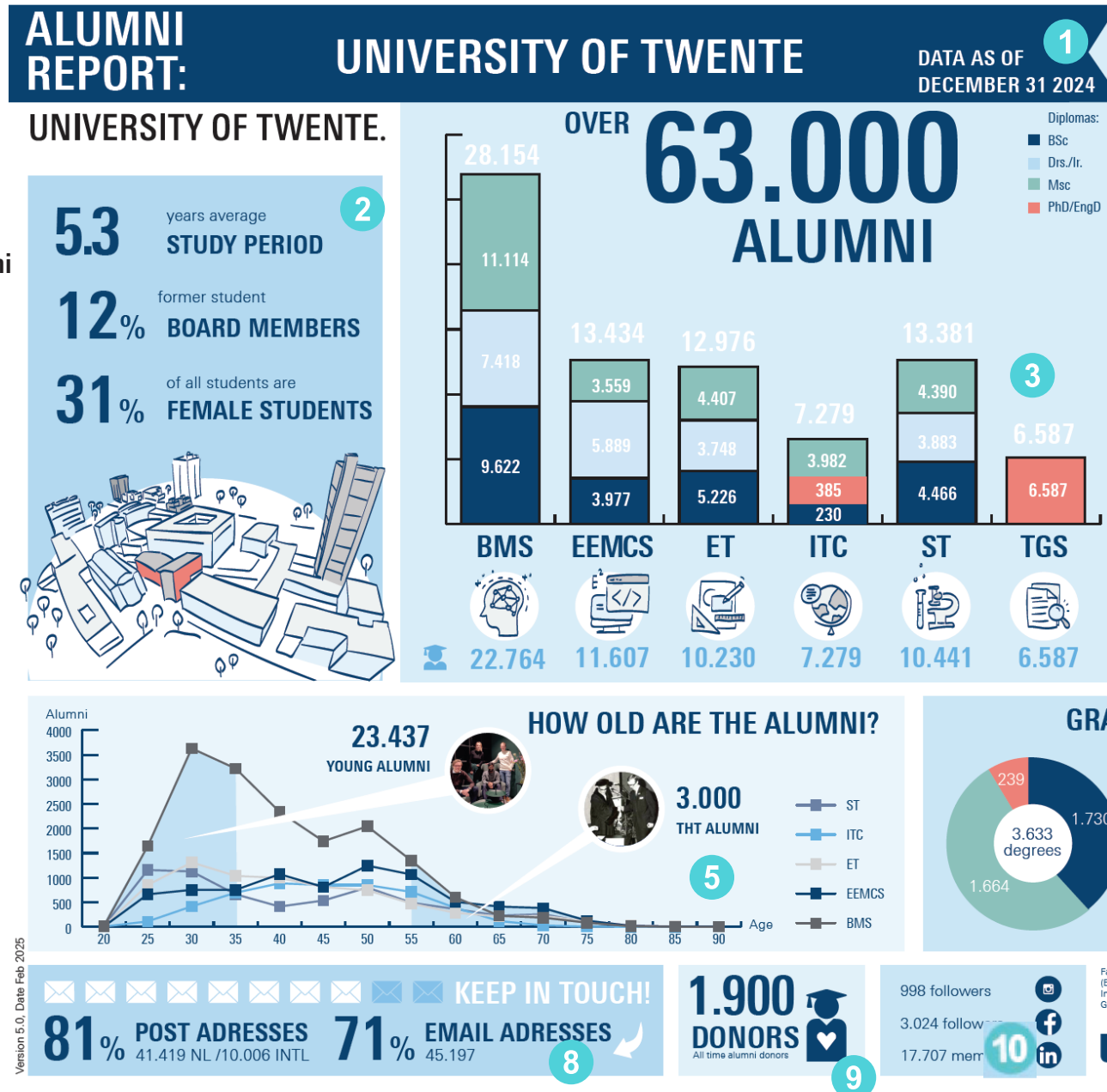
utwente.nl/alumni

ALUMNI & DEVELOPMENT OFFICE



KEY SECTIONS OF THE ALUMNI REPORT

- 1 Level of alumni report & timestamp of collected data
- 2 Breakdown of study period, board members & gender
- 3 Total degrees per faculty
Breakdown of degrees
Total alumni per faculty
- 4 Selection of alumni with career details from LinkedIn & largest employers of alumni based on LinkedIn
- 5 Alumni ages per faculty
Young alumni, 35 & under
THT alumni, 1964-1985
Entrepreneurial alumni, 1985-2000
- 6 Degrees in 2024
- 7 Breakdown of alumni by geographic locations
- 8 breakdown of available contact information
- 9 Total number of alumni who have donated to the UT
- 10 Social media channels



PROMINENT ALUMNI



ANK BIJLEVELD-SCHOUTEN (PA 1983)
Former Minister of Defense - The Netherlands
(2017-2021)



MARTIN VAN DEN BRINK (APH 1984)
Former President and CTO ASML
(1999-2024)



JITSE GROEN (Former student BIT)
Founder and CEO JUST Eat Takeaway.com
(1999-present)



AMON MURWIRA (GIS 2003)
Minister of Higher Education, Science & Technology Development - Zimbabwe
(2019-present)



JEANNINE PEEK (IEM 1993)
Managing Director Capgemini Netherlands
(2020-present)



PETER RIEZEBOS (COM 2013, PYS 2014)
Visual Artist
(2014-present)

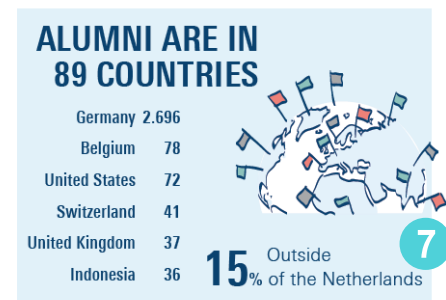
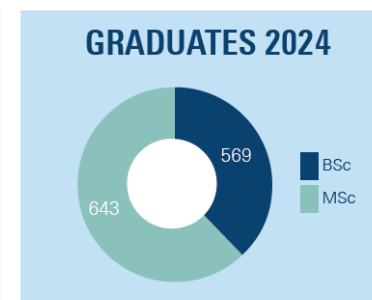
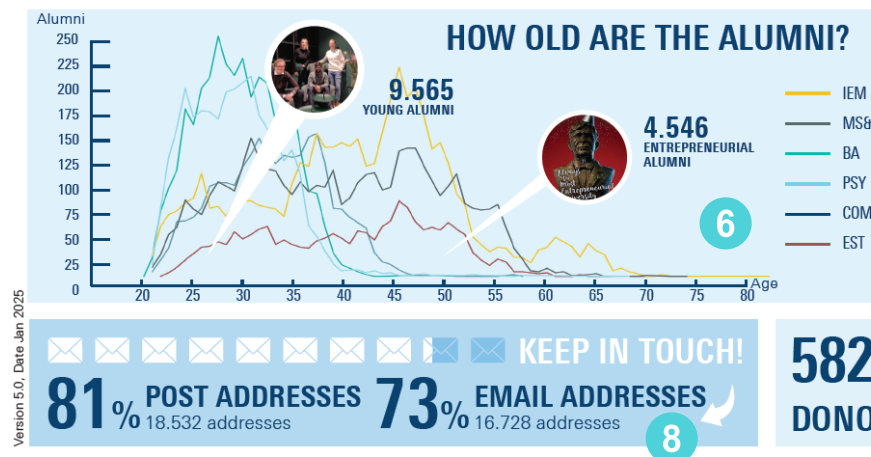
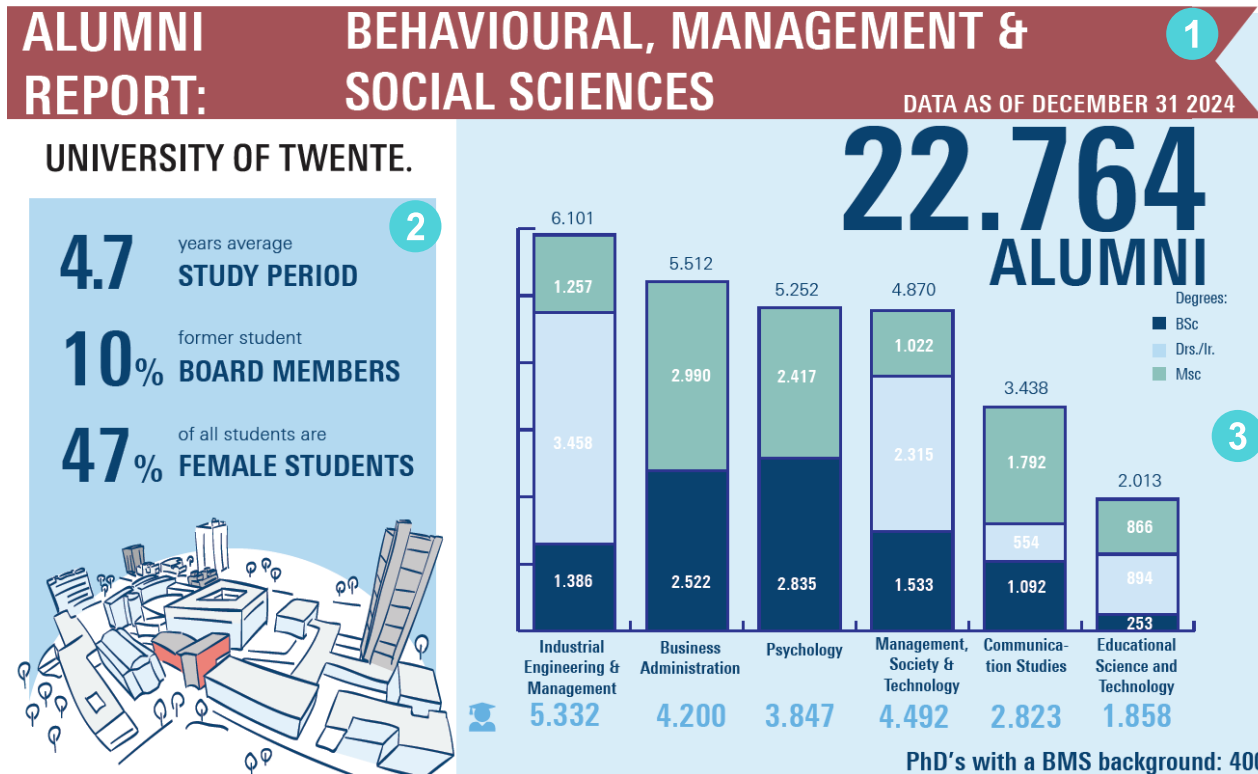
MAJOR EMPLOYERS



ACCENTURE, ARCADIS, AKZONOBEL, ASML, CAPGEMINI, DELOITTE, DEMCON, DSM, IBM, ING, KPMG, KPN, NEDAP, NXP, OCE, PHILIPS, PWC, RABOBANK, SHELL, THALES, TNO, TOPICUS

KEY SECTIONS OF THE ALUMNI REPORT - FACULTY VIEW

- 1 Faculty name & timestamp of collected data
- 2 Campus 'experience' stats & gender
- 3 Total alumni
Degrees per study
Total alumni per study
Alumni with UT PhDs
- 4 Selection of alumni with career details from LinkedIn
- 5 Largest employers of alumni based on LinkedIn
- 6 Breakdown of alumni by age
Young Alumni, 35 & under
THT alumni, 1964-1985
Entrepreneurial alumni, 1985-2000
- 7 Breakdown of alumni by geographic locations
- 8 Breakdown of available contact information
- 9 Number of alumni who have donated to the UT
- 10 Examples of alumni engagement by studies



Study programs: Industrial Engineering & Management (IEM), Management, Society & Technology (MS&T), Business Administration (BA), Psychology (PSY), Communication Studies (COM) and Educational Science & Technology (EST) are depicted in the age graph. MS&T also includes historic Public Administration (PA) alumni. Other studies included in the total alumni numbers are Philosophy of Science, Technology and Society, Teacher Education and Science Communication, Environmental and Energy Management and Human Resource Development.

utwente.nl/alumni

KEY SECTIONS OF THE ALUMNI REPORT - STUDY VIEW

- 1 Study programme name & timestamp of collected data
- 2 Breakdown of study year, board members & gender
- 3 Total alumni & degrees
Breakdown of 2024 degrees
Alumni with UT PhDs
- 4 Selection of alumni with career details from LinkedIn
- 5 Largest employers of alumni based on LinkedIn
- 6 Breakdown of alumni by age
Young Alumni, 35 & under
THT alumni, 1964-1985
Entrepreneurial alumni, 1985-2000
- 7 Breakdown of alumni by nationality
- 8 Breakdown of available contact information
- 9 Key labour market stats & study satisfaction levels of recent graduates (based on the 2023 National Alumni Survey)

ALUMNI REPORT:

CIVIL ENGINEERING & MANAGEMENT

DATA AS OF
DECEMBER 31 2024

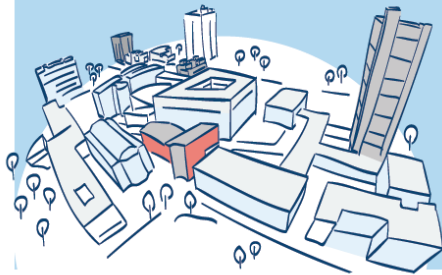
UNIVERSITY OF TWENTE.

1992 year of first
STUDENT

1995 year of first
GRADUATE

15% former student
BOARD MEMBERS

16% of all alumni are
FEMALE

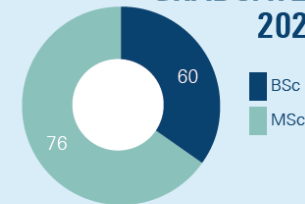


2.462
ALUMNI

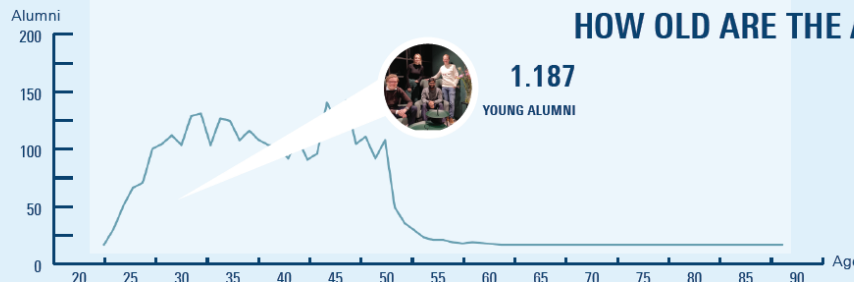


PhD's with CE background: 47

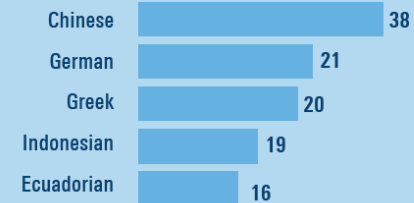
GRADUATES
2024



HOW OLD ARE THE ALUMNI?



TOP 5 INTERNATIONALS



88%
are Dutch

KEEP IN TOUCH!
85% POST ADDRESSES 2.217 addresses
75% EMAIL ADDRESSES 1.964 addresses

2023 NATIONAL ALUMNI SURVEY DATA

This MSc is a good basis for entry to the labour market*: 4.30 (3.88)**
Time from graduation to first job (in months): 4.3 (2.0)**
Avg. gross monthly salary: €3.123 (€2.806)**
Would graduates choose the same study again? Yes: 100% (92% in 2021)
*on a scale from 1 to 5; **figure in parentheses is the UT average

ALUMNI HIGHLIGHTS



GERHARD TEN BRINKE (CE 2006)
Project Manager at Defense - Commando
Material & IT (2023-present)



CECILE CLUITMANS (CE 2001)
Global Operations Director at Arcadis
(2024-present)



NIENKE VELDBOOM (CE 2012)
Associate Director Resilience & Maritime NL
at Royal Haskoning (2023-present)



TWAN VAN DUIVENBOODEN (CE 2012)
Design Review Manager at Auckland
Transport (2023-present)



KJELL KLOOSTERZIEL (CE 2002)
Director Schiphol International
(2019-present)



FIANNE LINDENAAR (CE 1997)
Partner at Twynstra Gudde
(2016-present)

MAJOR EMPLOYERS



ANTEA, ARCADIS, BAM INFRA, DELTARES,
FUGRO, HEIJMANS, MINISTERIE VAN
DEFENSIE, PRORAIL, RIJKSWATERSTAAT,
ROYAL HASKONING DHV, SWECO,
WITTEVEEN+BOS

Study program: Civil Engineering & Management (CE)

utwente.nl/alumni