

UNIVERSITY OF TWENTE ALUMNI REPORT 2022 FACULTY ST

UT.
FOR
LIFE



TABLE OF CONTENTS

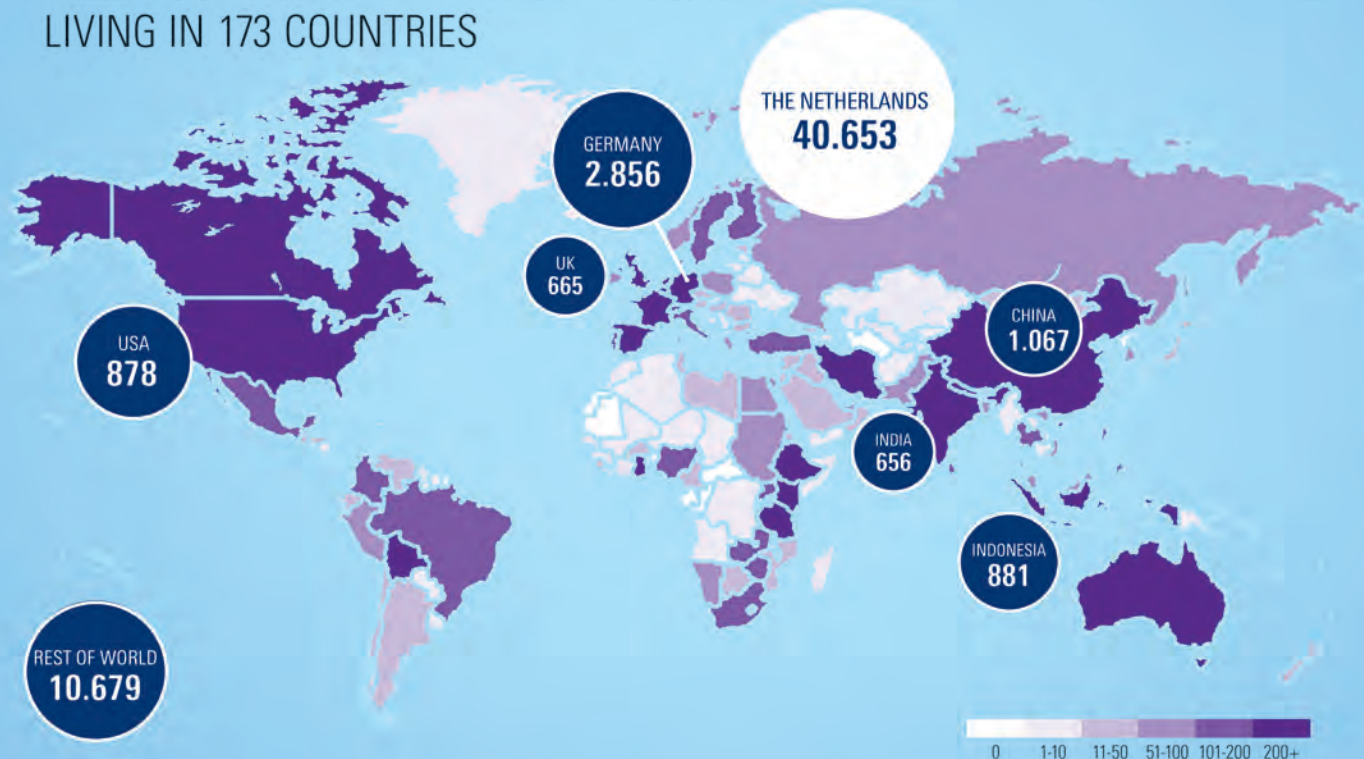
UT.
FOR
LIFE

| | |
|-------------------------------------|-------|
| University of Twente Overview | Pg 2 |
| Faculty ST Overview | Pg 3 |
| Chemical Engineering | Pg 4 |
| Applied Physics | Pg 5 |
| Technical Medicine | Pg 6 |
| Biomedical Engineering | Pg 7 |
| Health Sciences | Pg 8 |
| Advanced Technology | Pg 9 |
| Alumni & Development Office | |
| Contacs | Pg 10 |
| Alumni reports - Explanation of | |
| format | Pg 11 |

UNIVERSITY OF TWENTE.

YOUR ACCESS TO A WORLD WIDE COMMUNITY OVER 58.000 ALUMNI

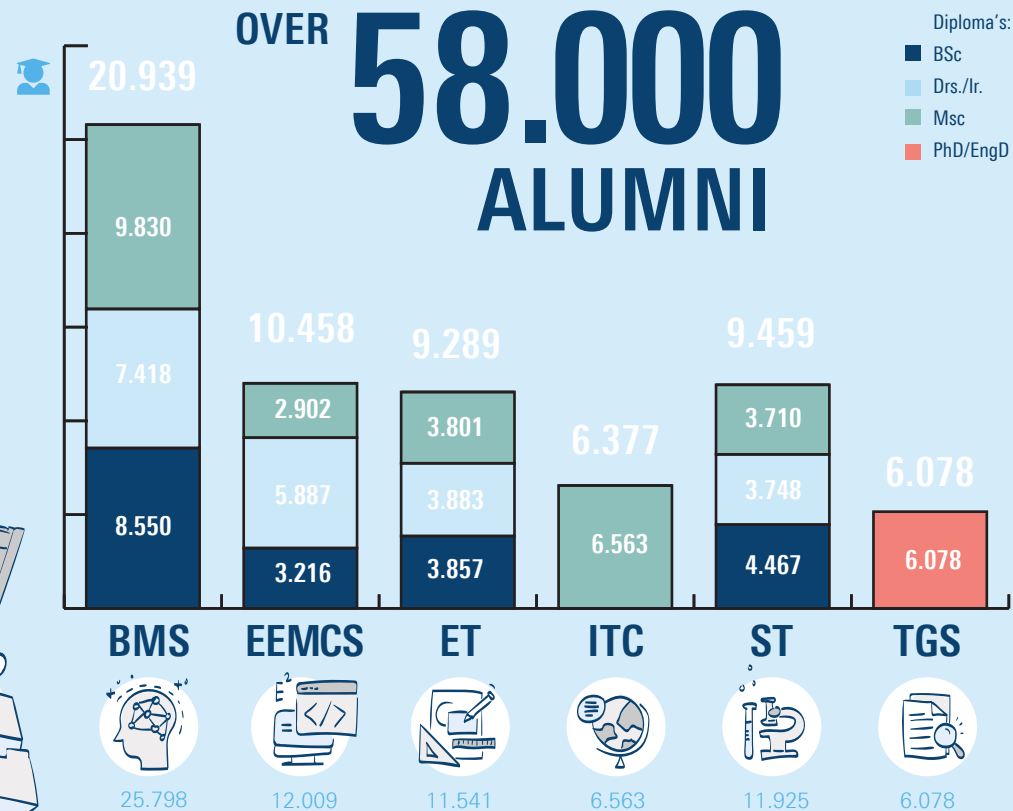
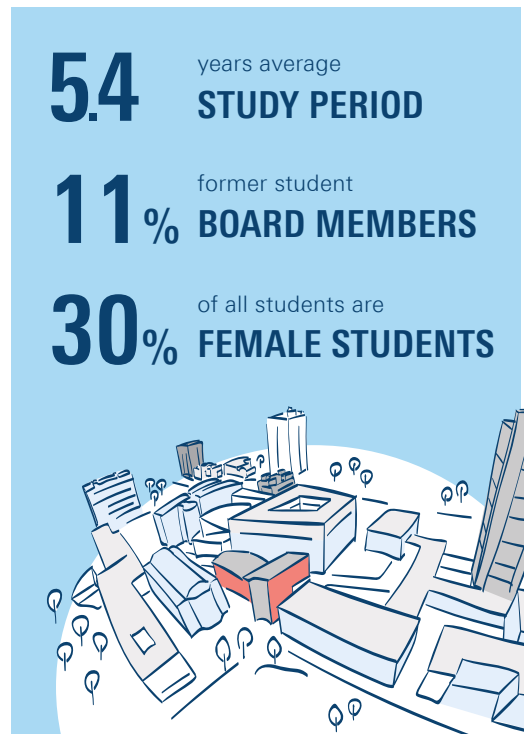
LIVING IN 173 COUNTRIES



ALUMNI REPORT:

UNIVERSITY OF TWENTE

DATA AS OF DECEMBER 31 2022

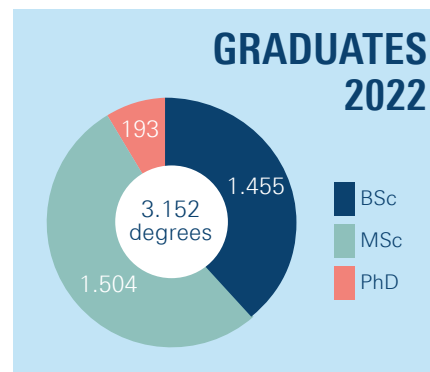
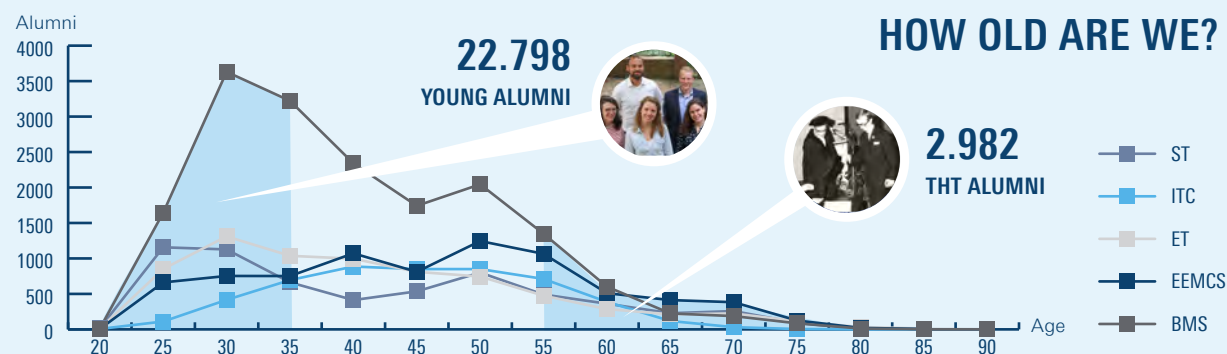


PROMINENT ALUMNI

- ANK BIJLEVELD-SCHOUTEN (PA 1983)**
Former Minister of Defense - The Netherlands (2017-2021)
- MARTIN VAN DEN BRINK (APH 1984)**
President and CTO ASML (1999-present)
- JITSE GROEN (Former student BIT)**
Founder and CEO JUST Eat Takeaway.com (1999-present)
- AMON MURWIRA (GIS 2003)**
Minister of Higher Education, Science & Technology Development - Zimbabwe (2019-present)
- JEANNINE PEEK (IEM 1993)**
Managing Director Capgemini Netherlands (2020-present)
- SIERT WIJNIA (ME 2000)**
Co-founder & Research Fellow Ultimaker (2011-present)

MAJOR EMPLOYERS

ACCENTURE, ARCADIS, AKZONOBEL, ASML, CAPGEMINI, DELOITTE, DEMCON, DSM, IBM, ING, KPMG, KPN, NEDAP, NXP, OCE, PHILIPS, PWC, RABOBANK, SHELL, THALES, TNO, TOPICUS



80% POST ADRESSES 37.995 NL / 10.147 INTL

67% EMAIL ADRESSES 40.663

KEEP IN TOUCH!

1.212 DONORS

45,800 followers

3.010 followers

17.171 members

Faculties: Behavioural, Management and Social Sciences (BMS), Engineering Technology (ET), Electrical Engineering, Mathematics and Computer Science (EEMCS), Geo-Information Science and Earth Observation (ITC), Science and Technology (ST), and Twente Graduate School (TGS).

utwente.nl/alumni

ALUMNI REPORT:

SCIENCE & TECHNOLOGY

DATA AS OF DECEMBER 31 2022

UNIVERSITY OF TWENTE.

6.0 years average
STUDY PERIOD

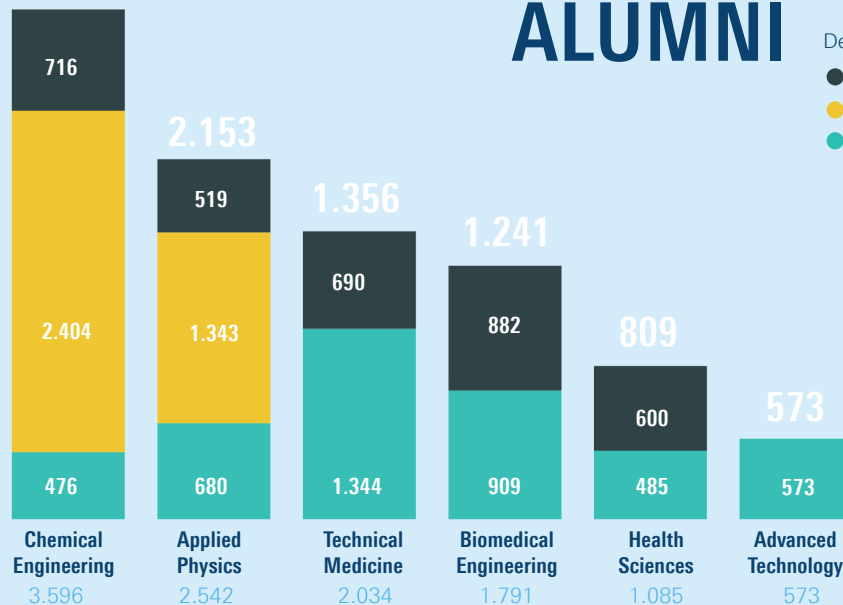
17% former student
BOARD MEMBERS

31% of all students are
FEMALE STUDENTS

 **3.287**

9.459
ALUMNI

Degree
● MSc
● Ir.
● BSc



PhD's with ST background: 859

ALUMNI AMBASSADORS



NIENKE BOERSMA (AP 1997)
Directeur Reporting at Achmea / Lid Directieraad (2019-present)



PETER BLAUWHOFF (CE 1978)
Board member at several organisations (2016-present)



GERARD VAN HARTEN (CE 1977)
Voorzitter Raad van Toezicht at University College Roosevelt (2012-present)



ANNEMIEKE NIJHOF (CE 1990)
Algemeen directeur Deltares (2020-present)



CASPER PEETERS (AP 1999)
CEO at E-mag & co-founder Xsens (2020-present)

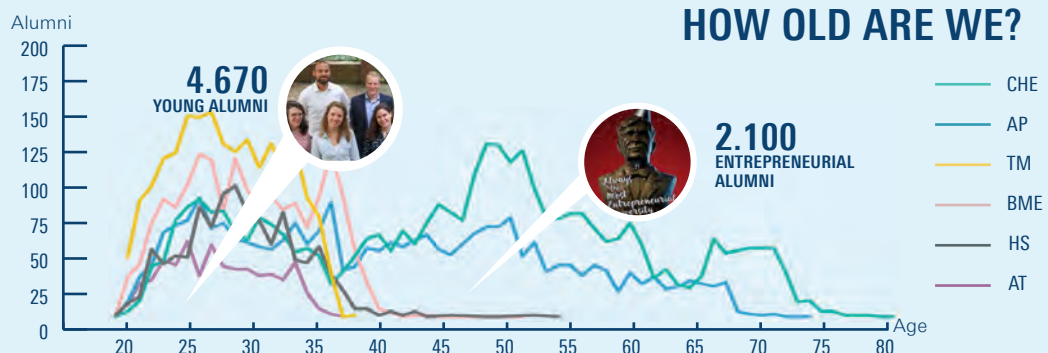


MICHEL WALHOF (AP 1982)
CEO at Aqua+ Sprinklersystemen (1982-present)

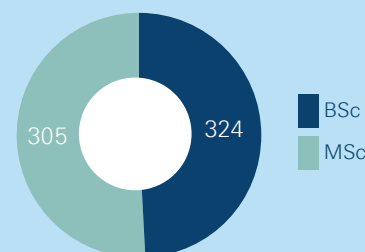
MAJOR EMPLOYERS



AKZONOBEL, ASML, DEMCON, DSM, FRIESLANDCAMPINA, NOURION, PHILIPS, SABIC, SHELL, TEIJIN ARAMID, TNO, TU DELFT, UMC UTRECHT




GRADUATES 2022



WE ARE IN 53 COUNTRIES

Germany 134
United States 59
Belgium 43
Switzerland 32
United Kingdom 26
Spain 23

5% Outside of the Netherlands



KEEP IN TOUCH!

84% POST ADDRESSES 7.962 addresses
71% EMAIL ADDRESSES 6.717 addresses

266
DONORS



BEST PRACTICES

BME Career Cafe
C.T.S.G. Alembic (CHE) Alumni Day
S.V. Arago (AP) Alumni Day

Study programs: Chemical Engineering (CHE), Applied Physics (AP), Technical Medicine (TM), Biomedical Engineering (BME), Health Sciences (HS) and Advanced Technology (AT) are depicted in the age graph. Other studies included in the total alumni numbers are Nanotechnology and Civil Engineering, but those studies have fewer than 300 alumni.

utwente.nl/alumni

ALUMNI REPORT:

CHEMICAL ENGINEERING

DATA AS OF
DECEMBER 31 2022

UNIVERSITY OF TWENTE.

6.3 years average
STUDY PERIOD

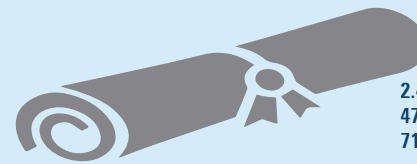
16% former student
BOARD MEMBERS

18% of all alumni are
FEMALE

TOP 5 BOARD MEMBERSHIPS

| | |
|------------------|-----|
| C.T.S.G. Alembic | 253 |
| D.R.V. Euros | 30 |
| D.Z. Euros | 30 |
| Cabezota | 29 |
| T.C. Ludica | 23 |

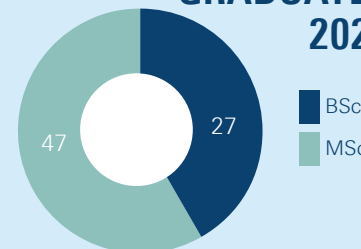
3.287
ALUMNI



2.404 Ir.
476 BSc
716 MSc

PhD's with CHE background: 364

GRADUATES 2022



ALUMNI HIGHLIGHTS



MARIETTE BONTKES (CHE 2001)
Technical Director Western Europe at Givaudan (2016-present)



SANDER KLIJNSTRA (CHE 2002)
Policy Advisor on Waste Management and Circular Economy at Gemeente Den Haag (2017-present)



IVO LANSBERGEN (CHE 1998)
President Animal Nutrition & Health at DSM Nutritional Products (2019-present)



HERRY NIJHUIS (CHE 1985, PhD 1990)
Director Applied and Engineering Sciences at NWO (2017-present)



RICHARD PAALMAN (CHE 1986)
Director Health, Biotechnology and Chemistry at European Patent Office (2014-present)

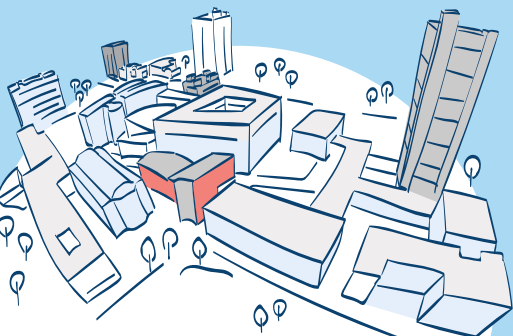


WALTER TOBÉ (CHE 1991)
Consultant Circular Economy at Tauw (2021-present)

MAJOR EMPLOYERS



AKZONOBEL, ASML, DOW, DSM, FLUOR CORPORATION, FRIESLANDCAMPINA, NOURION, SABIC, SHELL, TEIJIN ARAMID, TNO, WORLEY



TOP 5 NATIONALITIES

| | |
|------------|----|
| Indonesian | 40 |
| Chinese | 32 |
| Indian | 27 |
| German | 18 |
| Iranian | 12 |



89%
are Dutch

KEEP IN TOUCH!

78% POST ADDRESSES 2.565 addresses
52% EMAIL ADDRESSES 1.708 addresses

2021 NATIONAL ALUMNI SURVEY DATA

This MSc is a good basis for entry to the labour market*: 4.2 (3.82)**

Time from graduation to first job (in months): 3.2 (3.0)**

Avg. gross monthly salary: €2.998 (€2.849)**

Would graduates choose the same study again? Yes: 87% (83% in 2020)

*on a scale from 1 to 5; ** figure in parentheses is the UT average

Study program: Chemical Engineering (CHE)

utwente.nl/alumni

ALUMNI REPORT:

APPLIED PHYSICS

DATA AS OF
DECEMBER 31 2022

UNIVERSITY OF TWENTE.

6.9 years average
STUDY PERIOD

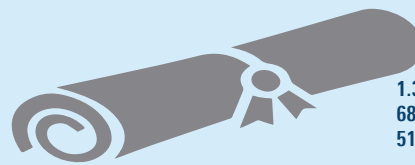
21% former student
BOARD MEMBERS

10% FEMALE

TOP 5 BOARD MEMBERSHIPS

| | |
|----------------------|-----|
| S.V. Arago | 264 |
| D.K.V. Euros | 23 |
| D.A.V. Kronos | 19 |
| D.B.V. de Stretchers | 16 |
| D.W.V. Klein Verzet | 14 |

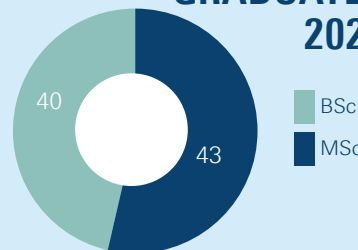
2.153
ALUMNI



1.343 Ir.
680 BSc
519 MSc

PhD's with AP background: 365

GRADUATES 2022



ALUMNI HIGHLIGHTS



STEF CARELSEN (AP 2013)
Senior Inspector at Authority for Nuclear Safety and Radiation Protection (2019-present)



REGINA FREED (AP 1996)
Vice-President, Alx Solutions at Applied Materials (2021-present)



MARTIN VAN DEN HEUVEL (AP 2002)
Managing Director & Partner at Boston Consulting Group (2019-present)



PIETER-PAUL LEROU (AP 2002, PhD 2007)
Chief Technology Officer at DEMCON (2018-present)



ELISE LÖBKER (AP 2015)
Data Science Manager at eBay (2017-present)

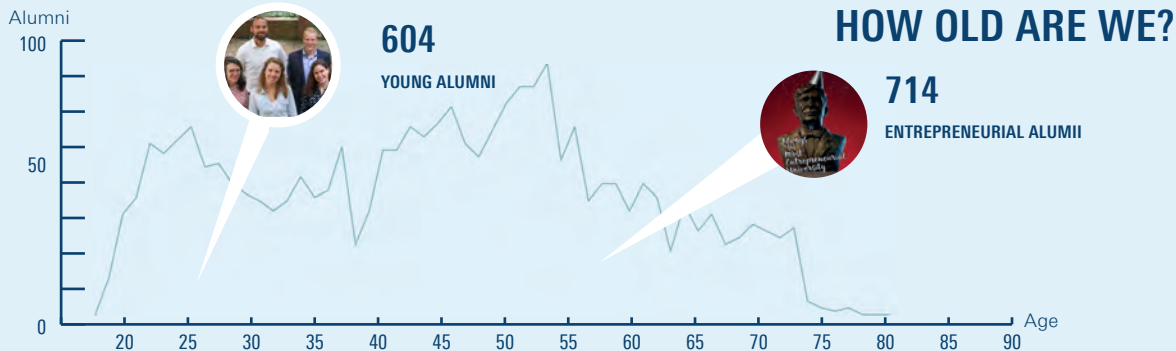


WILLEM STRIJBOSCH (AP 2000)
Vice-President Product for Maps at TomTom (2021-present)

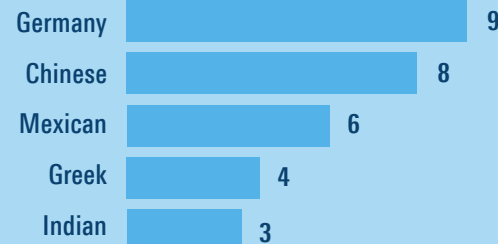
MAJOR EMPLOYERS



ASML, CANON, DEMCON, ERASMUS MC, ING, NRG CONSULTING, PHILIPS, SAXION, SOLMATES, THALES, TNO



TOP 5 NATIONALITIES



97%
are Dutch

KEEP IN TOUCH!

82% POST ADDRESSES 1.759 addresses
64% EMAIL ADDRESSES 1.369 addresses

2021 NATIONAL ALUMNI SURVEY DATA

This MSc is a good basis for entry to the labour market*: 4.75 (3.82)**

Time from graduation to first job (in months): 2.8 (3.0)**

Avg. gross monthly salary: €2.750 (€2.849)**

Would graduates choose the same study again? Yes: 75% (76% in 2020)

*on a scale from 1 to 5; ** figure in parentheses is the UT average

Study program: Applied Physics (AP)

utwente.nl/alumni

ALUMNI REPORT:

HEALTH SCIENCES

DATA AS OF
DECEMBER 31 2022

UNIVERSITY OF TWENTE.

4.3 years average
STUDY PERIOD

9% former student
BOARD MEMBERS

76% of all students are
FEMALE STUDENTS

TOP 5 BOARD MEMBERSHIPS

| | |
|------------------|----|
| SV Sirius | 30 |
| AEGEE-Enschede | 6 |
| AV Pallas Athena | 6 |
| SHOT | 4 |
| AV Epione | 4 |

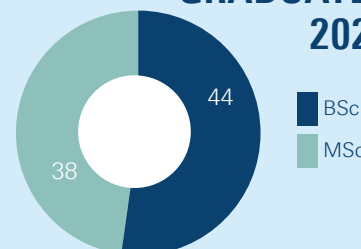
810
ALUMNI

486 BSc

600 MSc

PhD's with HS background: 16

GRADUATES 2022



ALUMNI HIGHLIGHTS



GÜLSEN ÖCAL (HS 2017)
Operational Account Manager at Nedap Healthcare (2018-present)



MARGO KOSTER (HS 2012)
Proposition lead infectious diseases at Topicus.Healthcare (2022-present)



ANNEMIEKE SCHOLTEN (HS 2010)
Teammanager Analyse at Menzis (2016-present)



TIMON SIBMA (HS 2008)
Manager Dep. Research, Dev. & Intl. Affairs at Zorginstituut Nederland (2022-present)



LAURA STEENTJES (HS 2015)
Senior beleidsmedewerker curatieve zorg at Ministerie van Volksgezondheid, Welzijn en Sport (2016-present)



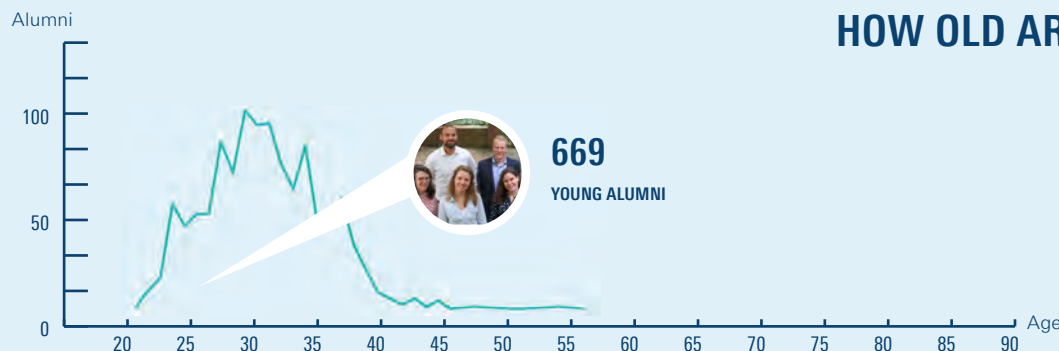
DOUWE WILLINK (HS 2016)
Manager Strategy & Operations - Healthcare at KPMG Nederland (2021-present)

MAJOR EMPLOYERS



AMC, ASML, CHIPSOFT, DEMCON, LEIDEN UMC, MAASTRICHT UNIVERSITY, NEDAP HEALTHCARE, ROESSINGH RESEARCH AND DEVELOPMENT, SAXION, TNO, TOPICUS, UMC UTRECHT

HOW OLD ARE WE?



TOP 5 NATIONALITIES

| | |
|------------|----|
| German | 28 |
| Chinese | 6 |
| Indonesian | 3 |
| Indian | 2 |
| Austrian | 1 |



93%
are Dutch

KEEP IN TOUCH!

90% POST ADDRESSES 732 addresses
90% EMAIL ADDRESSES 725 addresses

2021 NATIONAL ALUMNI SURVEY DATA

This MSc is a good basis for entry to the labour market*: 3.88 (3.82)**
Time from graduation to first job (in months): 1.9 (3.0)**
Avg. gross monthly salary: €3.033 (€2.849)**
Would graduates choose the same study again? Yes: 87% (73% in 2020)

*on a scale from 1 to 5; ** figure in parentheses is the UT average

Study program: Health Sciences (HS)

utwente.nl/alumni

ALUMNI REPORT:

ADVANCED TECHNOLOGY

DATA AS OF
DECEMBER 31 2022

UNIVERSITY OF TWENTE.

5.7 years average
STUDY PERIOD

20% former student
BOARD MEMBERS

16% of all alumni are
FEMALE

TOP 5 BOARD MEMBERSHIPS

S.V.A.T. Astatine 52

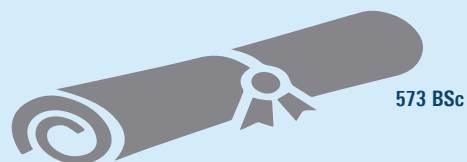
D.K.V. Euros 5

Overleg Studieverenigingen 4

TSAC 4

D.W.V. Hardboard 3

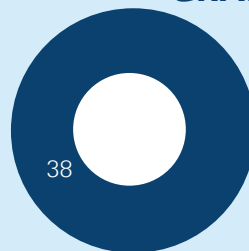
573
ALUMNI



573 BSc

PhD's with AT background: 12

GRADUATES 2022



BSc

ALUMNI HIGHLIGHTS



BART CLAESSEN (AT 2010, ME 2013)
Co Founder at EAZ Wind
(2014-present)



WOUT OUDE ELFERINK (AT 2014)
Computer Vision Engineer at Vitestro
(2022-present)



SIMON PIETERSEN (AT 2016)
Brewing Technologist at Royal Swinkels
Family Brewers (2019-present)



PIM ROSSEN (AT 2008, BA 2009)
Principal at A.T. Kearney (2018-present)



DAAN DE RUITER (AT 2014, AM 2016)
Software Engineer - MLOps at Imagr
(2022-present)

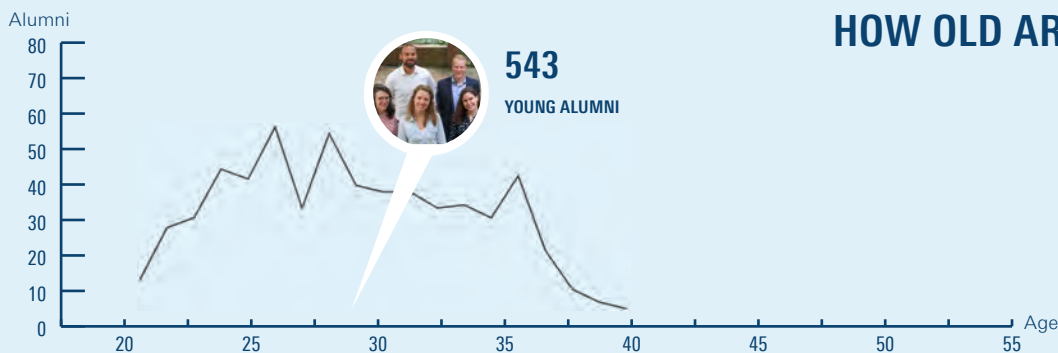
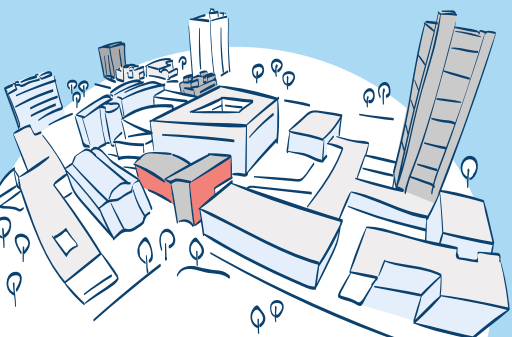


WESSEL STRAATMAN (AT 2012, SC 2014)
Advisor Asset Management
at Coteq Netbeheer (2020-present)

MAJOR EMPLOYERS

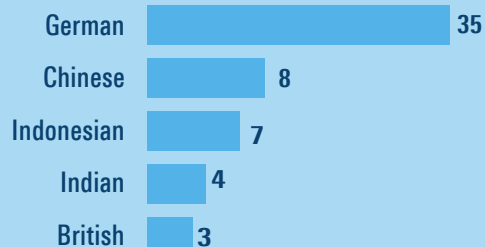


ASML, DELOITTE, DEMCON, INTEL,
RABOBANK, SHELL, THALES, TNO, VDL



HOW OLD ARE WE?

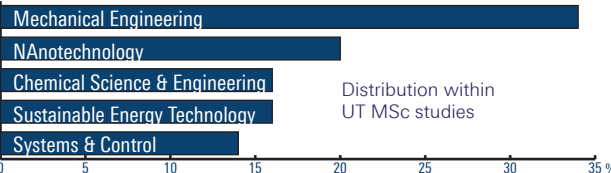
TOP 5 NATIONALITIES



86%
are Dutch

KEEP IN TOUCH!

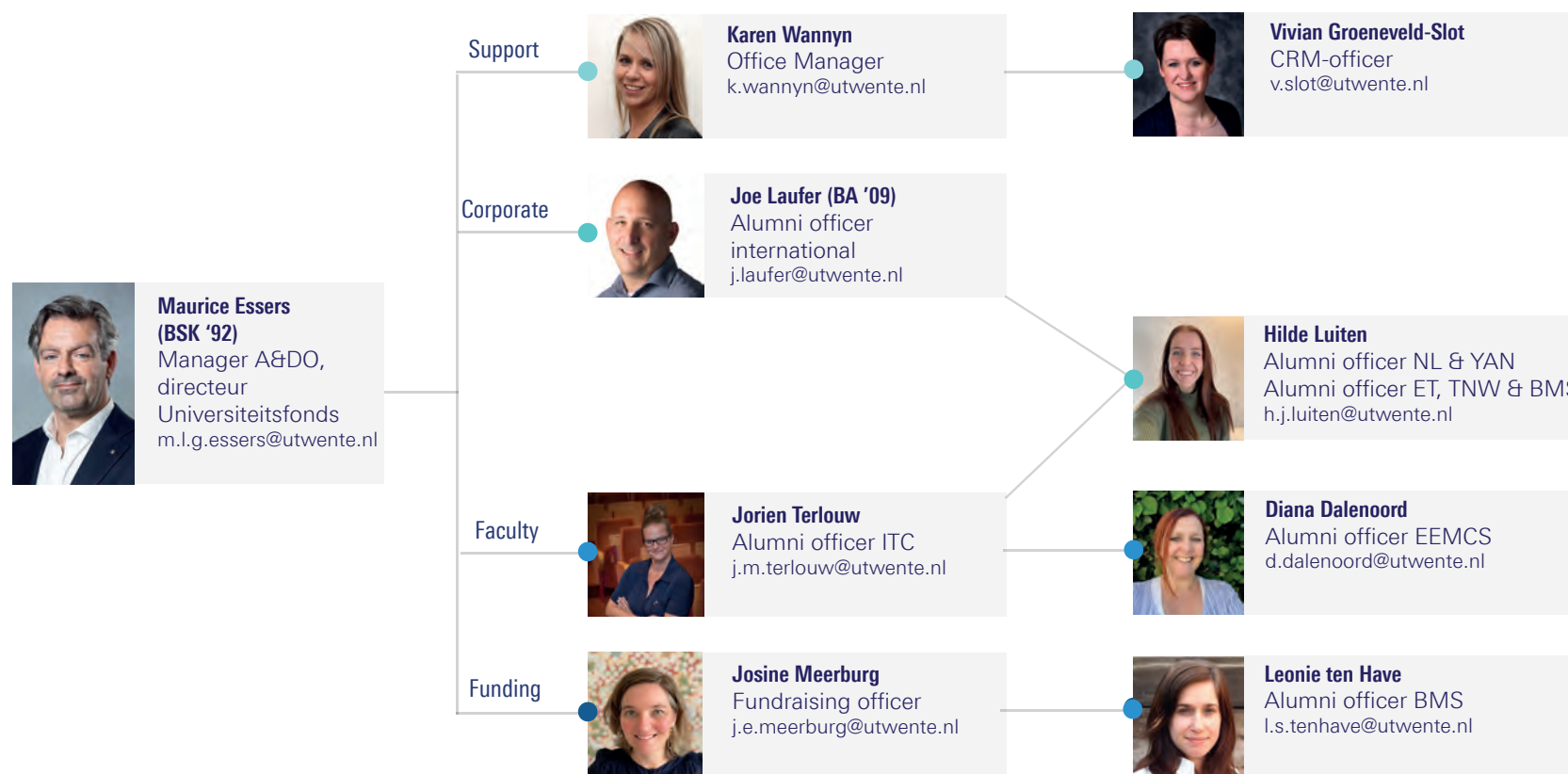
92% POST ADDRESSES 530 addresses
93% EMAIL ADDRESSES 532 addresses



Study program: Advanced Technology (AT)

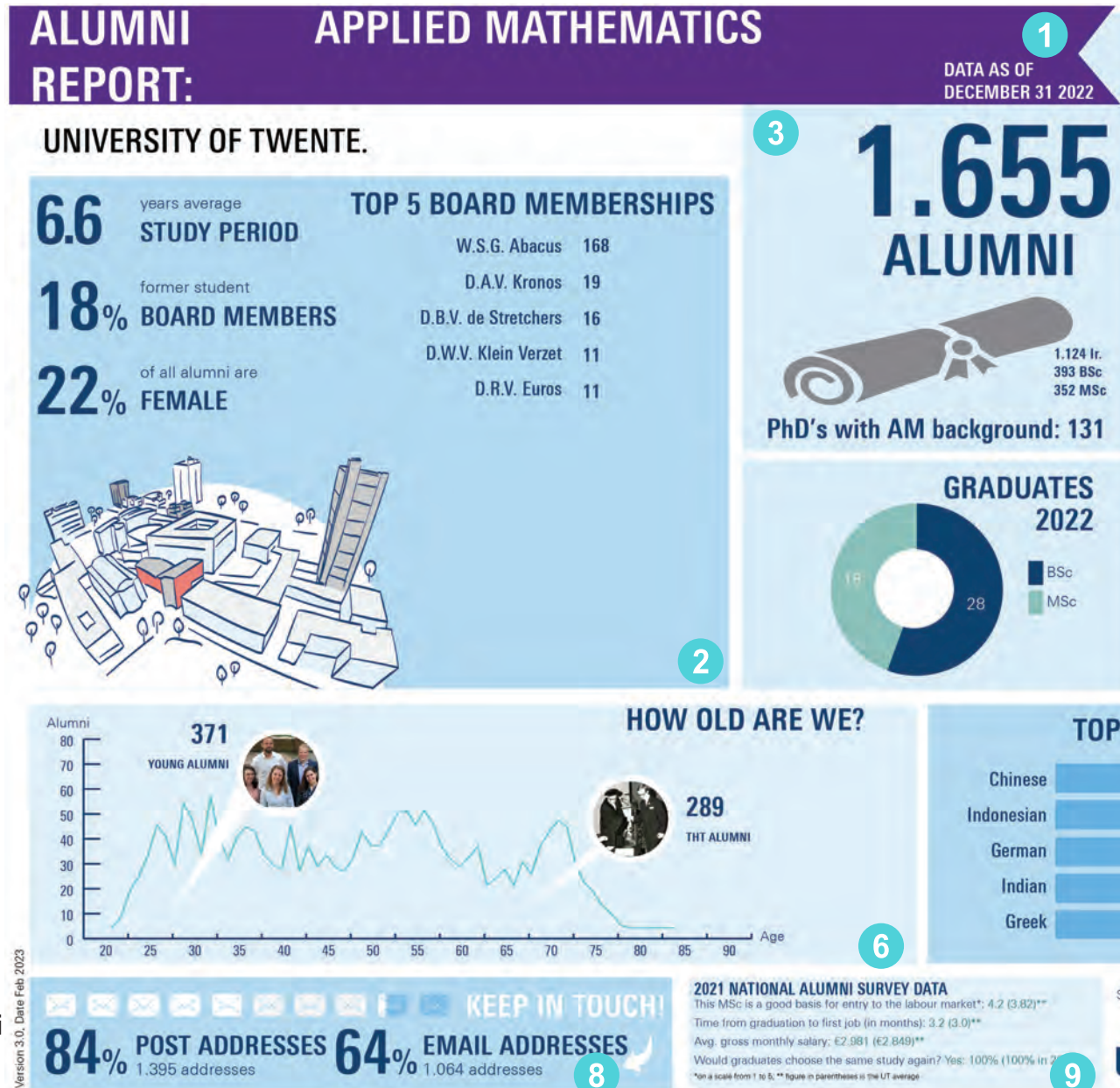
utwente.nl/alumni

ALUMNI & DEVELOPMENT OFFICE



KEY SECTIONS OF THE ALUMNI REPORT - STUDY VIEW

- 1 Study programme name & timestamp of collected data
- 2 Campus 'experience' stats & gender
- 3 Total alumni & degrees
Breakdown of 2022 degrees
Alumni with UT PhDs
- 4 Selection of alumni with career details from LinkedIn
- 5 Largest employers of alumni based on LinkedIn
- 6 Breakdown of alumni by age
Young Alumni, 35 & under
THT alumni, 1964-1985
Entrepreneurial alumni, 1985-2000
- 7 Breakdown of alumni by nationality
- 8 Breakdown of available contact information
- 9 Key labour market stats & study satisfaction levels of recent graduates (based on the 2021 National Alumni Survey)



ALUMNI HIGHLIGHTS



RENE VAN BUUREN (AM 1995, PhD 1999)
Director Cybersecurity at Thales Nederland (2013-present)



WILLEM-JAN VAN HOUVE (AM 2000)
Senior Associate Dean at Carnegie Mellon University (2020-present)



CEES LINKS (AM 1982)
General Manager at Qorvo (2016-2022)



ANTHONY OHAZULIKE (AM 2009, PhD 2014)
Senior Research Engineer and Team Leader at Hitachi Europe R&D (2018-present)



DAAN DE RUITER (AM 2016)
MLOps Engineer at Imagr (2022-present)



DOMOKOS SARMANY (PhD 2010)
Analyst at European Centre for Medium-Range Weather Forecasts (2018-present)

MAJOR EMPLOYERS



WILHELMUS-ROTHSCHILD-ROBOTICA
WILHELMUS-ROTHSCHILD-ROBOTICA
WILHELMUS-ROTHSCHILD-ROBOTICA
WILHELMUS-ROTHSCHILD-ROBOTICA

5

TOP 5 NATIONALITIES

| | |
|------------|----|
| Chinese | 16 |
| Indonesian | 12 |
| German | 9 |
| Indian | 5 |
| Greek | 5 |



94%
are Dutch

7

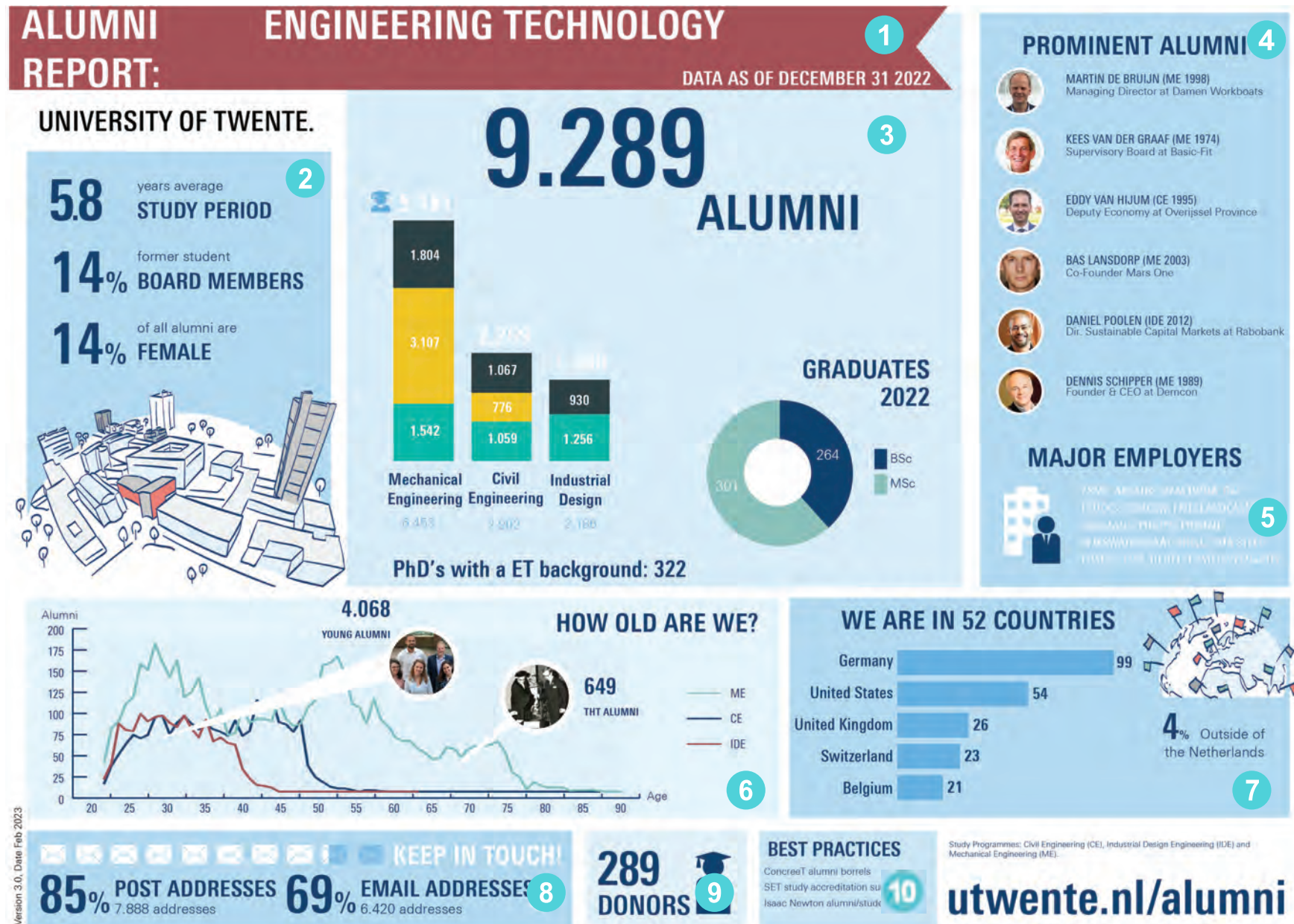
Study program: Applied Mathematics (AM)

utwente.nl/alumni

9

KEY SECTIONS OF THE ALUMNI REPORT - FACULTY VIEW

- 1 Faculty name & timestamp of collected data
- 2 Campus 'experience' stats & gender
- 3 Total alumni
Alumni/degrees per study
Degrees in 2022
Alumni with UT PhDs
- 4 Selection of alumni with career details from LinkedIn
- 5 Largest employers of alumni based on LinkedIn
- 6 Breakdown of alumni by age
Young Alumni, 35 & under
THT alumni, 1964-1985
Entrepreneurial alumni, 1985-2000
- 7 Breakdown of alumni by geographic locations
- 8 Breakdown of available contact information
- 9 Number of alumni who have donated to the UT
- 10 Examples of alumni engagement by studies



KEY SECTIONS OF THE ALUMNI REPORT - UNIVERSITY VIEW

1 Level of alumni report & timestamp of collected data

2 Campus 'experience' stats & gender

3 Total alumni
Alumni per faculty
Degrees per faculty

4 Selection of alumni with career details from LinkedIn
Largest employers of alumni based on LinkedIn

5 Alumni ages per faculty
Young Alumni, 35 & under
THT alumni, 1964-1985
Entrepreneurial alumni, 1985-2000

6 Degrees in 2022

7 Breakdown of alumni by geographic locations

8 Breakdown of available contact information

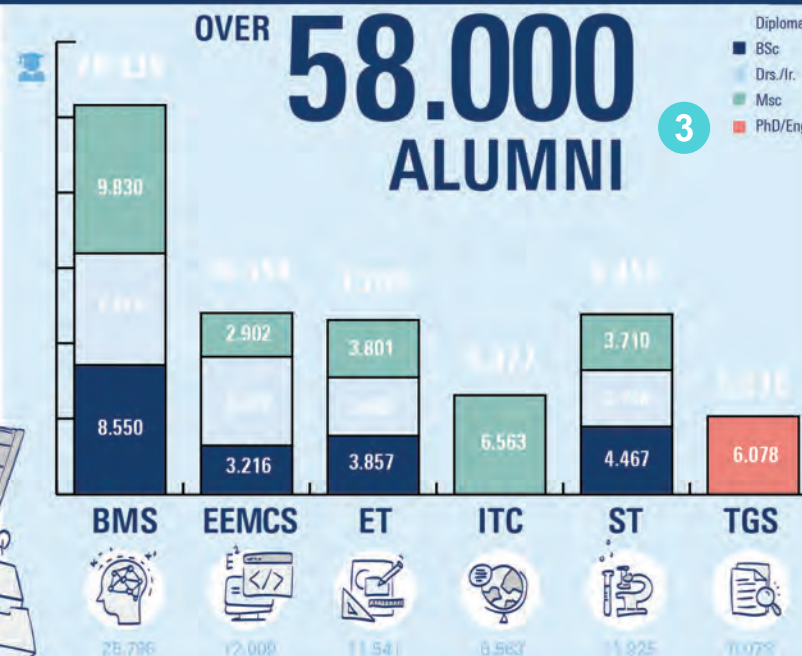
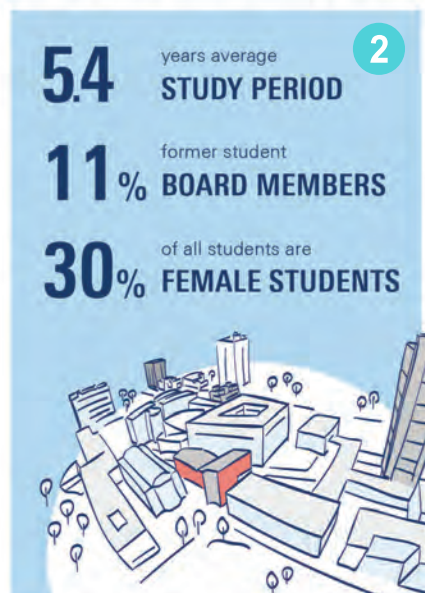
9 Number of alumni who have donated to the UT

10 Social media channels

ALUMNI REPORT: UNIVERSITY OF TWENTE

DATA AS OF DECEMBER 31 2022

UNIVERSITY OF TWENTE.



PROMINENT ALUMNI



ANK BIJLEVELD-SCHOUTEN (PA 1983)
Former Minister of Defense - The Netherlands (2017-2021)



MARTIN VAN DEN BRINK (APH 1984)
President and CTO ASML (1999-present)



JITSE GROEN (Former student BIT)
Founder and CEO JUST Eat Takeaway.com (1999-present)



AMON MURWIRA (GIS 2003)
Minister of Higher Education, Science & Technology Development - Zimbabwe (2019-present)



JEANNINE PEEK (IEM 1993)
Managing Director Capgemini Netherlands (2020-present)

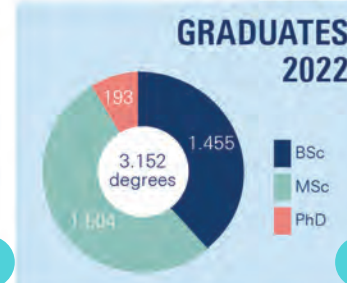


SIERT WIJNJA (ME 2000)
Co-founder & Research Fellow Ultimaker (2011-present)

MAJOR EMPLOYERS



ALUMNI WORK FOR
ASML - PHILIPS - NESTLE -
DAI - UNILEVER - SAP -
AND MANY OTHERS



80% POST ADDRESSES 37.995 NL / 10.147 INTL

67% EMAIL ADDRESSES 40.663

KEEP IN TOUCH!

1.212 DONORS

45,800 followers

3.010 followers

17.171 members

Faculties: Behavioural, Management and Social Sciences (BMS), Engineering Technology (ET), Electrical Engineering, Mathematics and Computer Science (EEMCS), Geo-Information Science and Earth Observation (ITC), Science and Technology (ST), and Twente Graduate School (TGS).

utwente.nl/alumni