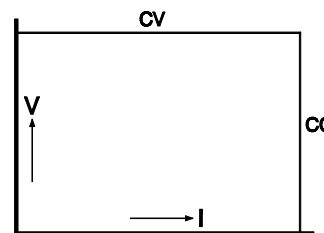




E - SERIES LINEAR LABORATORY POWER SUPPLIES



E 060 - 0.6 0 - 60 V 0 - 0.6 A
E 0300 - 0.1 0 - 300 V 0 - 0.1 A



10-turn potentiometer for voltage control.
 High resolution single turn potentiometer for current control.

Series and parallel connection is possible.
 In series up to 600 V for E 0300 - 0.1 and up to 300 V for other models.

Input 230 V 50-60 Hz.

Insulation (VDE 0550)

Input / output : 3000 Vrms
 Input / case : 1500 Vrms
 Output / case : 500 V DC

Operating temp. : Max. 45 °C

Safety

EN 60950 EN 61010

EMC

EN 50081-1 EN 50082-1
 EN 55022-B EN 61000-3-2
 EN 61000-4-2/-4-4/-4-5/-4-11
 ENV 50140 ENV 50141 ENV 50204

Dimensions and weight

93 x 219 x 154 mm (h x w x d), 2.8 kg

Specifications:

Regulation

Load 0 - 100%
 Line 207 - 253 V AC

Ripple + noise,
 rms (BW=300kHz)

Temp. coeff., per °C

Stability during 8 hrs
 after 1 hr warm up

Output imp. up to 100 kHz

Recovery time
 10 - 100% load step

Remote programming

E 060 - 0.6 etc.		E 0300 - 0.1	
CV	CC	CV	CC
5 mV	4 mA	20 mV	0.5 mA
5 mV	0.4 mA	10 mV	0.03 mA
0.1 mV	0.1 mA	0.5 mV	0.1 mA
1.10^{-4}	5.10^{-4}	1.10^{-4}	5.10^{-4}
1.10^{-3}	5.10^{-3}	1.10^{-3}	5.10^{-3}
0.1 Ohm	—	10 Ohm	—
15 μs	—	30 μs	—
0 - 5 kOhm	—	—	—

