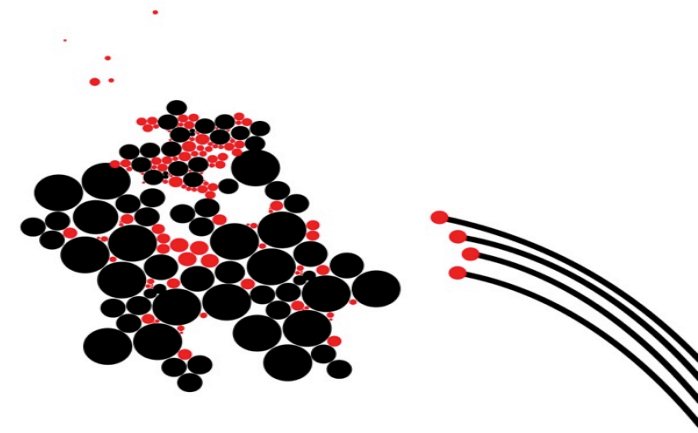


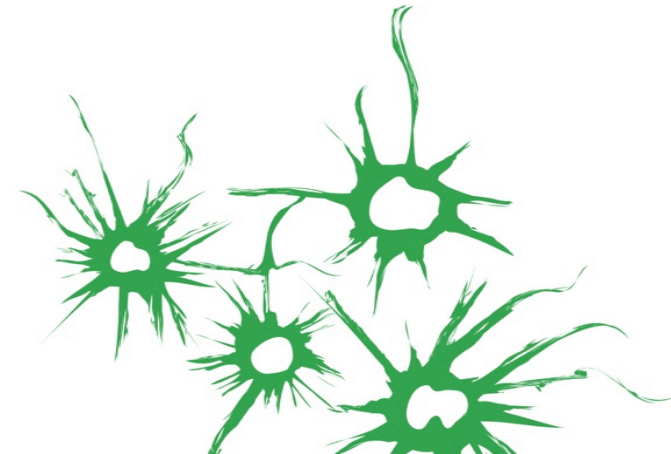
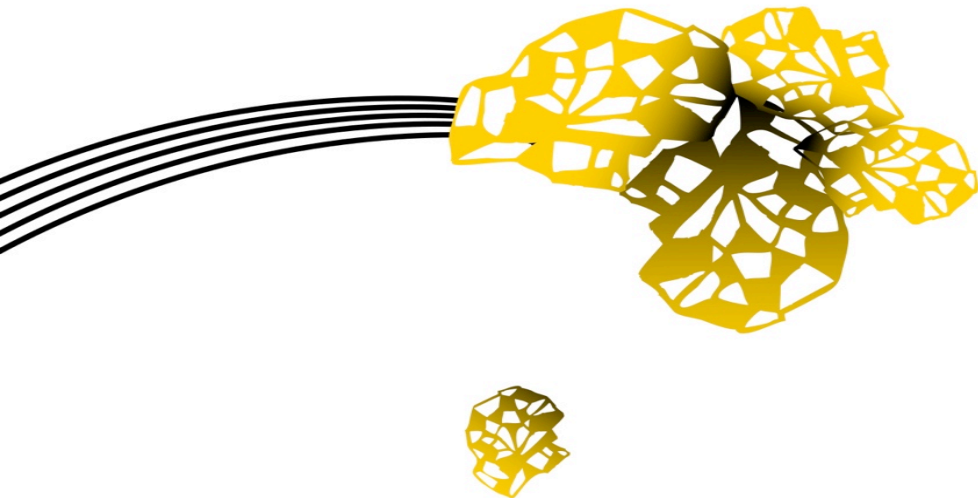
UNIVERSITY OF TWENTE.



PREPARING YOUR EXCHANGE

LETS GO STUDY ABROAD

Jitske Rijken exchange officer & Janke Rademaker, coordinator
of international affairs EEMCS



UNIVERSITY OF TWENTE.

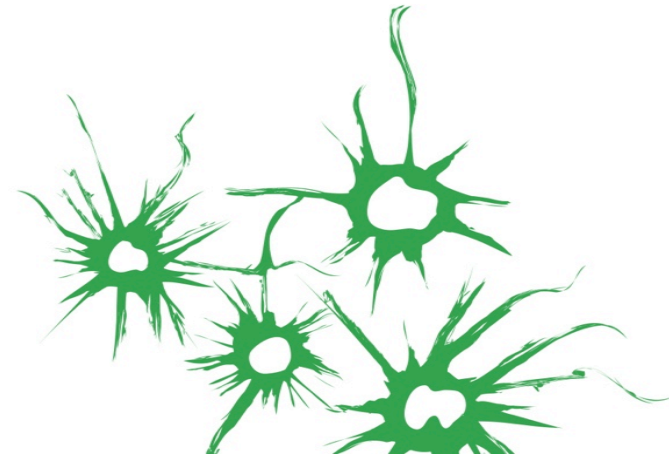
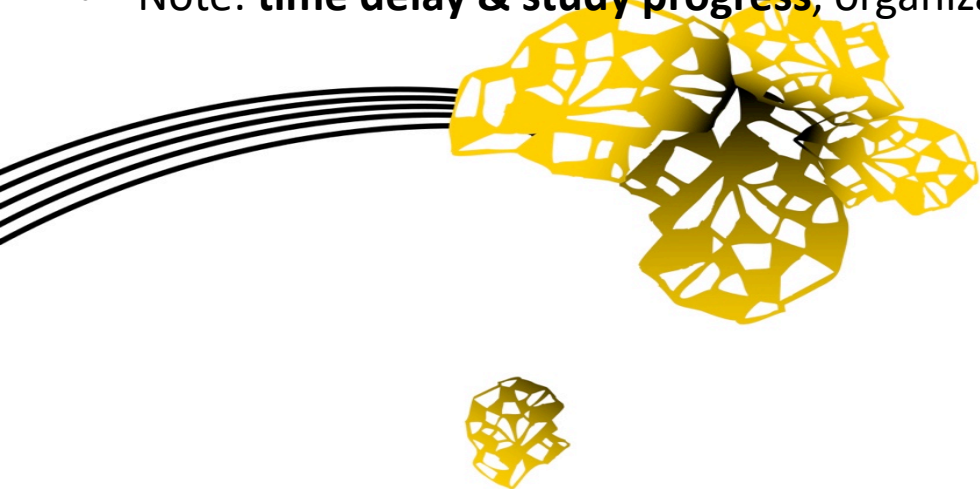
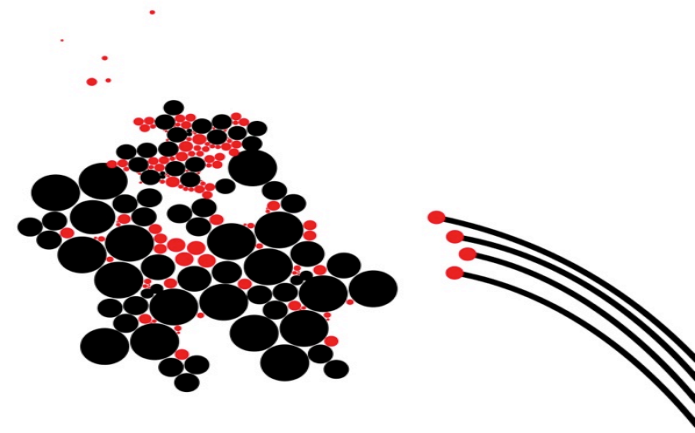
WHEN CAN I STUDY ABROAD?

During your **MINOR** - 5th semester (module 9 & 10) you have the option of

- a) Staying at UT
- b) **Go Abroad** on exchange (15-30 EC) courses

WHY?

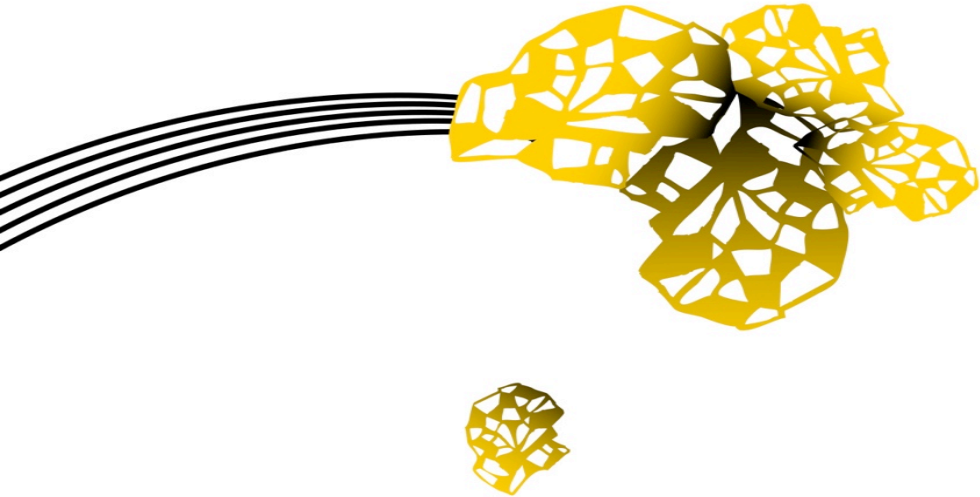
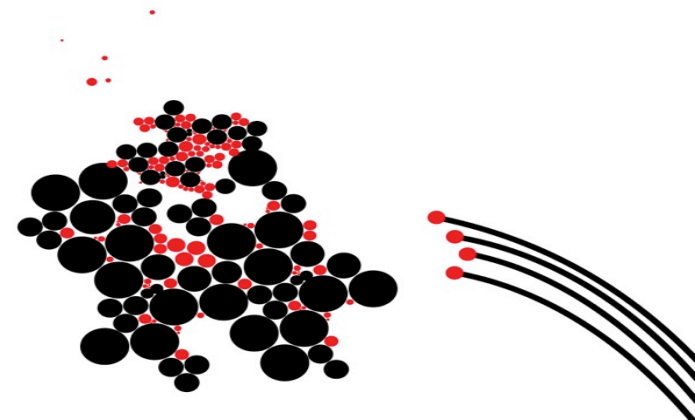
- further **study career** (msc)
- the **added value** of a stay abroad: fun, beautiful places, new people & cultures, educational & personal development
- Note: **time delay & study progress**, organization, home-sickness, costs, flexibility.



UNIVERSITY OF TWENTE.

WHAT DO I WANT TO DO ABROAD?

- What **discipline** do I want to study? – Broadening/deepening
- What would I want to **learn** besides studying new subjects? (language/culture/etc.)?
- What are the **criteria** of my educational programme ? (OER/TER – teaching & examination regulations)
www.utwente.nl/en/eemcs/education/teaching-and-examination-regulations/#teaching-and-examination-regulations-oer
- What would be my **favorite place(s)** to go to?



WHERE CAN I STUDY ABROAD?

1. EU- Partner & Non- EU Partner UT-Wide Universities - Study Abroad database: www.utwente.nl/en/study-abroad/dbase/
2. EEMCS specific EU & Non- EU partner Universities – EEMCS study abroad website: www.utwente.nl/en/eemcs/student-mobility/
3. Two International Networks – IS-link & Global E3 (EEMCS study abroad website)
4. Free-mover university

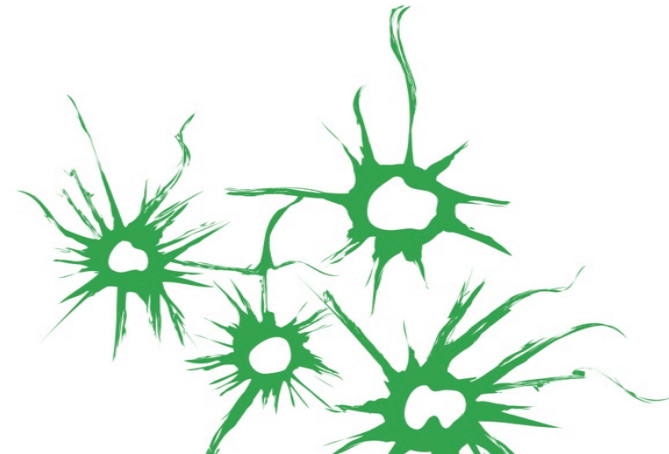
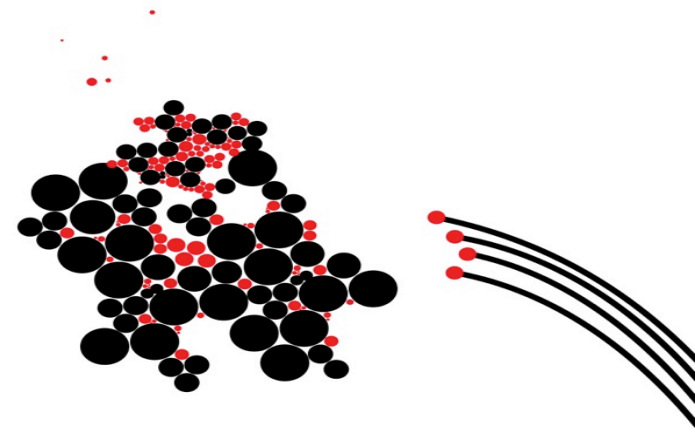


UT European Partner Universities weergeven op een grotere kaart

UNIVERSITY OF TWENTE.

HOW CAN I GO TO ANY OF THESE UNIVERSITIES?

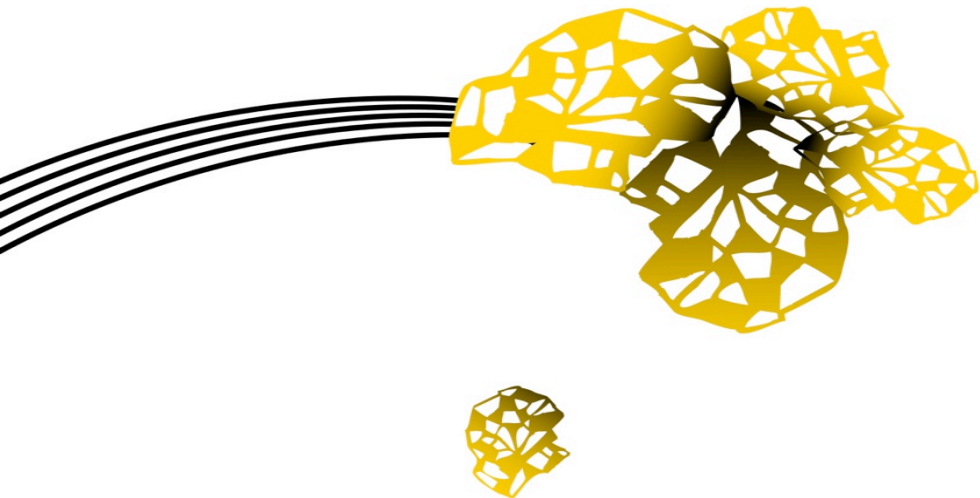
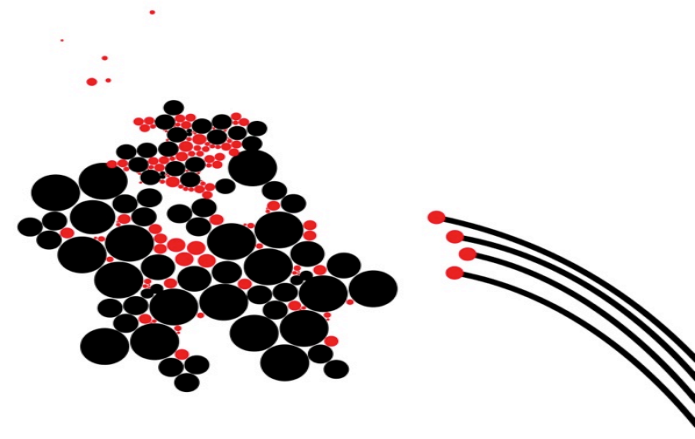
- Registration via **Mobility Online**: www.utwente.nl/en/education/current-students/mobility-online/
- **No tuition fees** for Partner- University
- **Limited** number of places
- Per university – **different** educational programmes/disciplines/number of places
- For NON-EU, UT wide partners – **UT draw** after faculty **nomination**
- **Deadlines** application – 1st February (start fall semester) & 7th September (start spring semester)
- Course choice – availability/timing, pre-requirements, language & programme conditions
- Various Scholarships available



UNIVERSITY OF TWENTE.

SCHOLARSHIPS AVAILABLE?

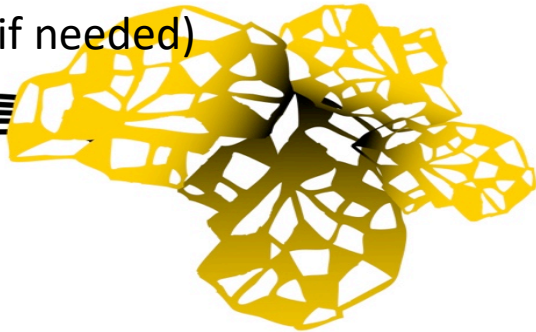
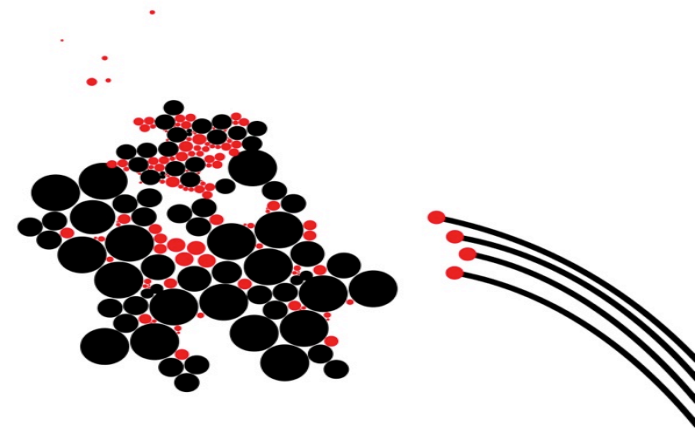
- Erasmus +
- TMF
- Student Ambassadors Scholarship – (Temporary not available)
- Holland scholarship - (Temporary not available)
- Today @ 17.00-18.00 Webinar with Nuffic on finances: <https://www.wilweg.nl/agenda/webinar-over-financien>
- Many more scholarships & their conditions to be found on “apply for scholarship” at: www.utwente.nl/en/study-abroad/study/
- LIMITED FUNDS



UNIVERSITY OF TWENTE.

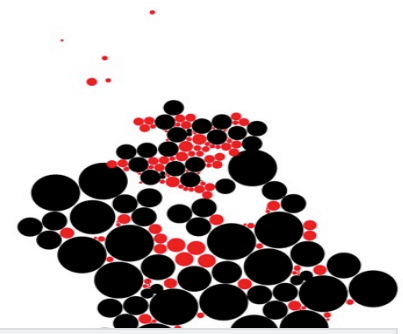
OTHER THINGS TO THINK ABOUT & REMEMBER

- Finances – costly, tickets, living expenses, travel.
- Housing (here & there) **Start on Time!**
- Insurance – incl UT International Registration (free liability & travel insurance):
www.utwente.nl/en/study-abroad/practical/files/registration-insurance/#mandatory-registration-of-your-stay-abroad
- Health & safety (Buza - <https://www.netherlandsworldwide.nl/countries>)
- Visa & passport
- Language test (if needed)
- Ov- chipcard



UNIVERSITY OF TWENTE.

RECAP – TIME LINE WHAT TO DO



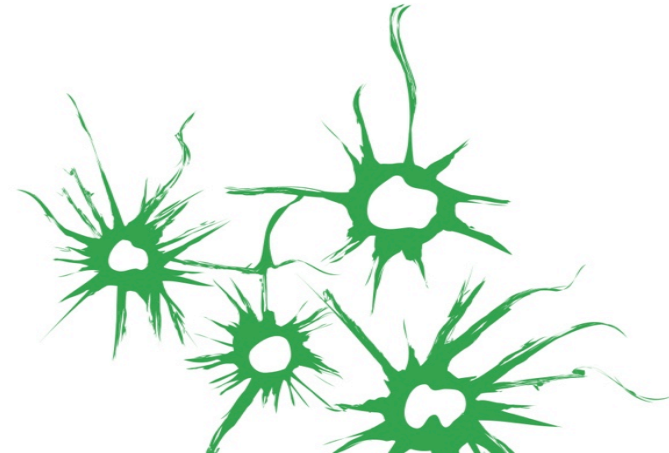
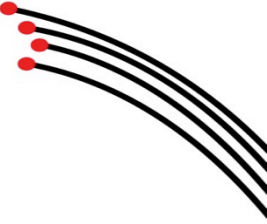
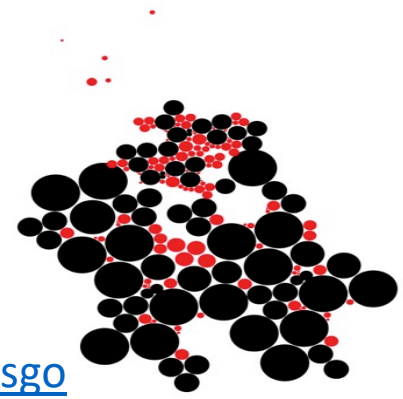
| Stage | Months in advance you need to arrange this | Things to do |
|---------------------------|--|---|
| Pre-application | 12-8 months (now-dec 17) | Orientation university choice & courses, passport, language test, register in Mobility online |
| Application | 8-3 months (jan-may 18) | Make study abroad plan, discuss with exchange officer, Nomination, UT wide draw, scholarships |
| Preparation for departure | 3-1 months (jun-aug 18) | Insurance, funds, visa, housing, OV card, final approval exam committee |
| Pack your bags | 1-0 months (jul-aug 18) | |
| While abroad | 0-12 months | Enjoy, let us know how things are going & always communicate if having problems! |
| Returning home | 0-1 months afterwards | Hand in ToR & report |



UNIVERSITY OF TWENTE.

USEFUL INFO?

- Let's Go Study Abroad Fair – 21st November 10:00-14:00 Design lab www.utwente.nl/letsgo
- EEMCS study abroad site – www.utwente.nl/en/eemcs/student-mobility/
- UT study abroad site - www.utwente.nl/en/study-abroad/
- EWI site programme conditions - www.utwente.nl/en/eemcs/education/teaching-and-examination-regulations/#teaching-and-examination-regulations-oer
- Mobility online: www.utwente.nl/en/education/current-students/mobility-online/
- Wil Weg (in dutch): www.wilweg.nl
- Erasmus Student Network Twente: www.esntwente.nl



Questions/further info:

Send me an e-mail, or make an appointment, via:

studyabroad-eemcs@utwente.nl

