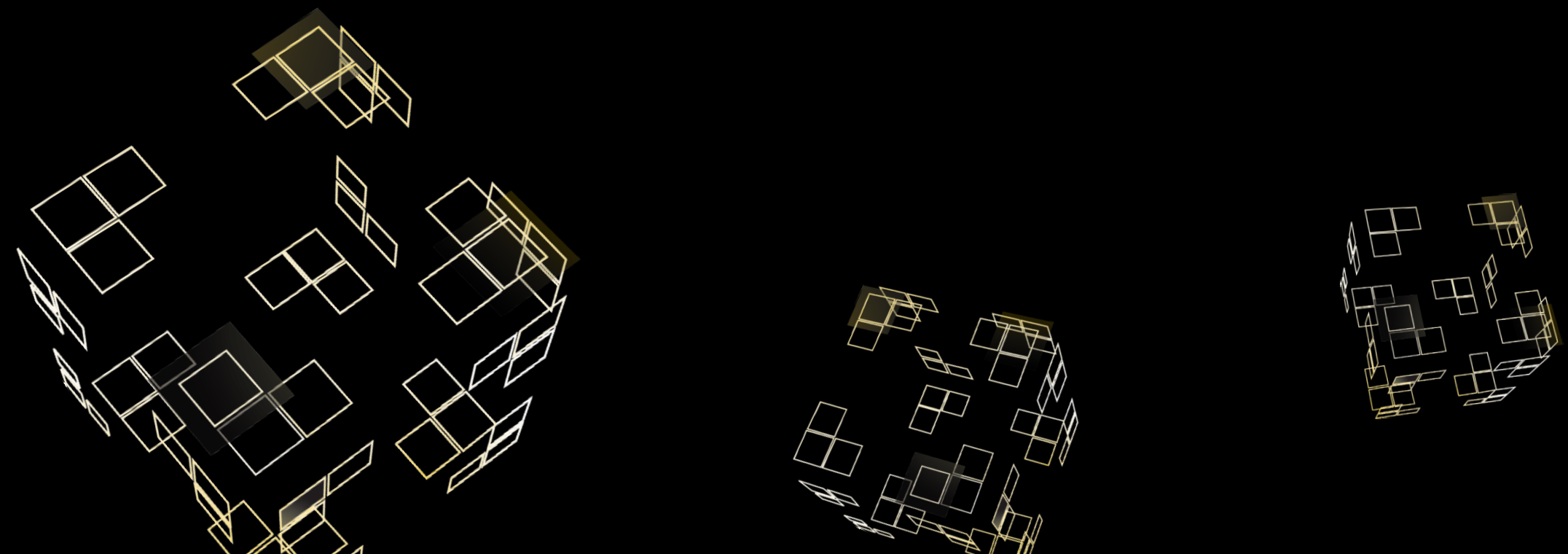
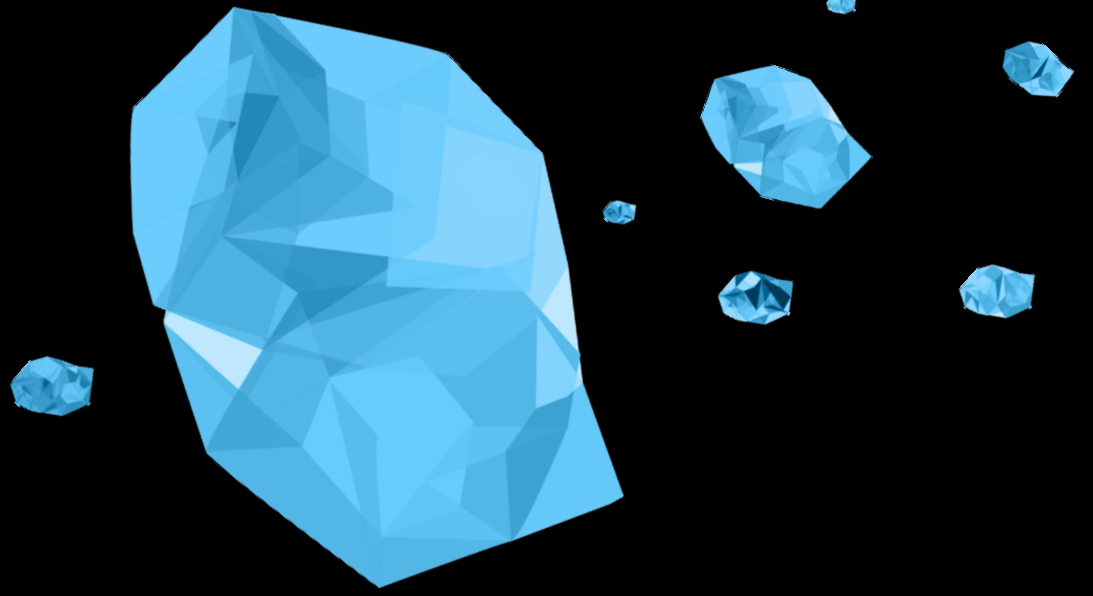
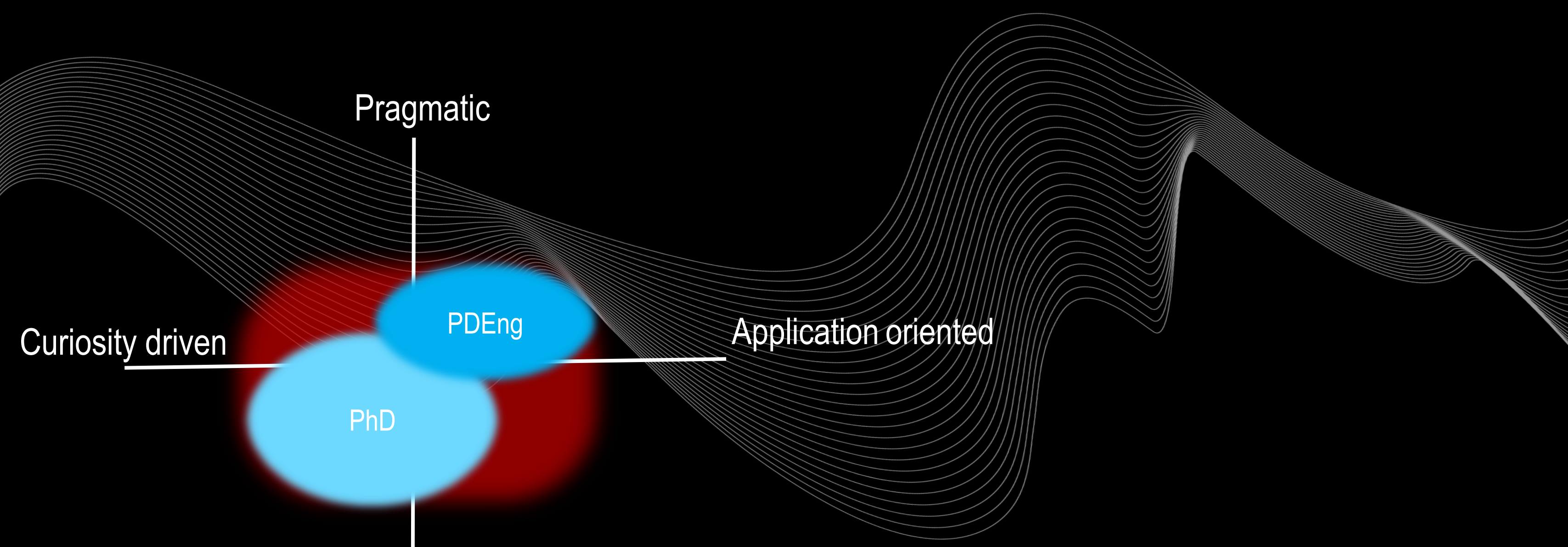


UNIVERSITY
OF **PROFESSIONAL**
DOCTORATE IN ENGINEERING.





Pragmatic

PDEng

PhD

Application oriented


Curiosity driven

Fundamental



PDEng- Professional Doctorate Engineering

- Post- MSc technological designer programme
- Two- year programme
- Certified degree PDEng

A photograph of three young men in a laboratory or workshop setting. They are gathered around a computer monitor, looking at the screen with interest. The man on the left is wearing a light blue button-down shirt. The man in the middle has curly hair and is wearing a white t-shirt with a red graphic that says 'CLOSE TALKER' and a cartoon character. The man on the right is wearing a dark t-shirt. The background is dimly lit with blue and purple ambient lighting, suggesting a modern, high-tech environment.

To educate
**High-end, creative and innovative
technological designers**
Solutions for
**Complex problems with a multi-
disciplinary character**

**UNIVERSITY
OF TWENTE.**

PDEng

- Complex technological design project
- Educational programme @ UT
- Design project @ company
- PDEng trainee employed by
 - UT
 - Company
- Receive salary
- Supervised by company and UT
- **Hire by assignment**





Educational programme

- Professional Development courses
- In- depth and broadening courses
- Short projects

First year

Second year

Professional development courses (~10%)

Deepening and broadening courses (~40%)

Design Project (~50%)

A young man with dark hair is looking upwards at a large, detailed model of a falcon in flight. The falcon is suspended in the air, with its wings spread wide. The scene is set in a large, white, curved tunnel or atrium. The lighting is dramatic, with a bright light source on the right side of the frame, creating a strong glow and casting shadows. The man's hands are raised towards the falcon, as if he is reaching out to it. The overall atmosphere is one of awe and scientific interest.

Design project

- Integration of knowledge in assignment
- Large multidisciplinary design project
- Scientific supervision from the university



Civil Engineering

- Infrastructure
- Transport
- Water management

UNIVERSITY
OF TWENTE.



Energy & Process Technology

- Nutrition
- Energy
- Process
- Materials



Maintenance

- Failure behavior
- Condition monitoring
- Physics based data analysis
- Life Cycle costs
- Logistics



Robotics

- Safety and Inspection Robotics
- Medical and Rehabilitation Robotics
- Industrial Robotics

A person in an orange shirt is working with a large, complex metal structure in a laboratory or workshop. The structure is made of several large, rectangular metal plates held together by bolts. The person is looking at the structure, and the background is slightly blurred, showing other parts of the facility.

PDEng trainee

- Employed by
 - UT
 - Company
- Receive salary
- Educational programme at UT
- Design project at customer
- Supervised by customer and UT
- **Hired by assignment**

FINANCE

Annual fee for companies

- payroll @UT: 32.5k€
- Payroll @ company: 15k€

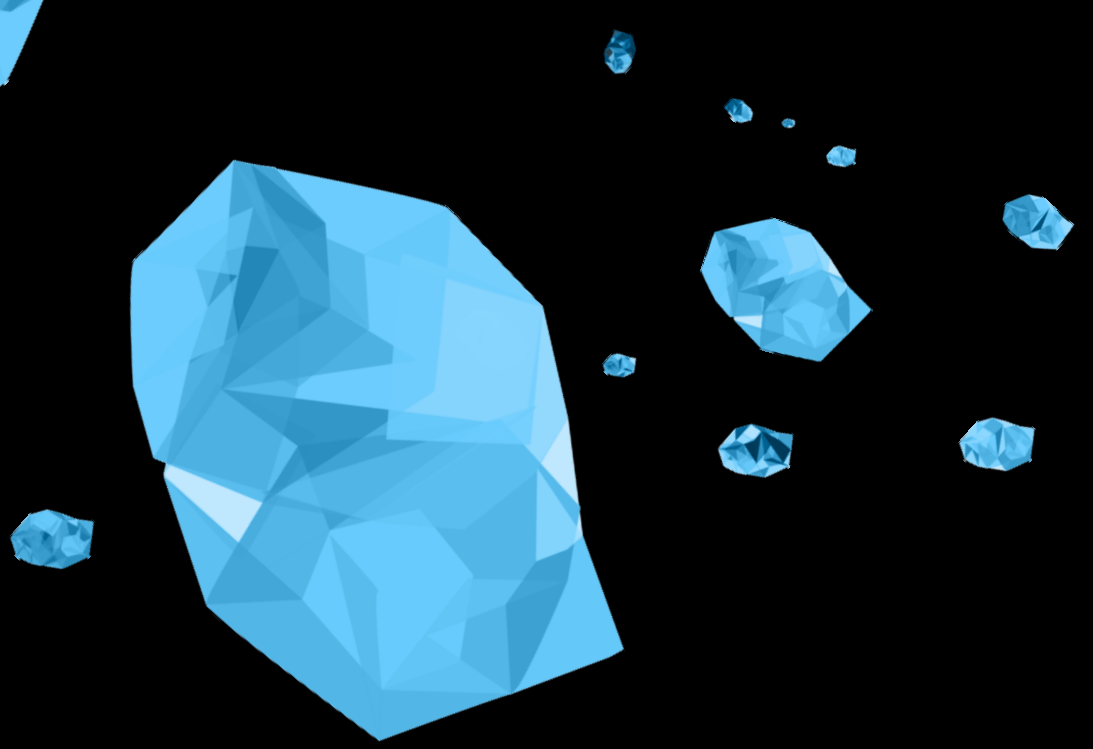
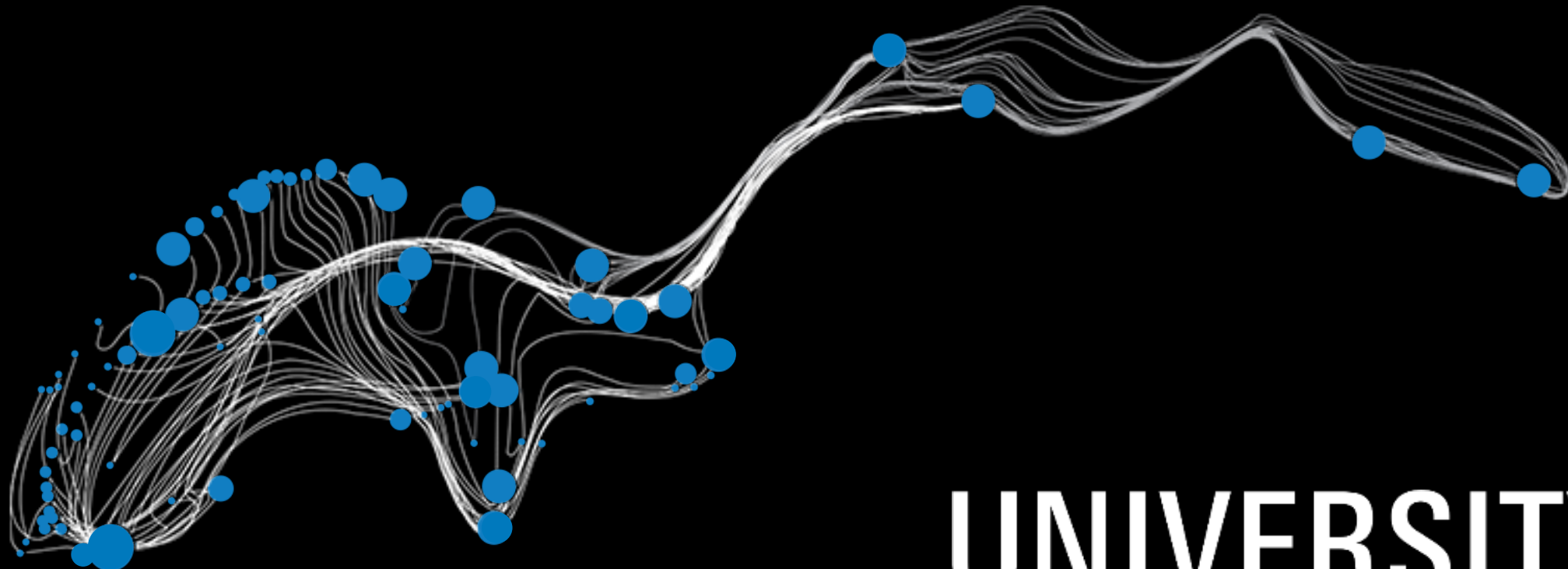
VALUE PROPOSITION COMPANY

- Solution for complex technological design
- Partly tailor made educational programma
- Talent scout and effective recruitment
- Multidisciplinary high-end designer
- Knowledge exchange company and UT
- Favourable IP arrangement for company
- short project (2 years) - UT



VALUE PROPOSITION UT

- extent the relations with the business community
- An excellent way for industrial innovation
- Inspiration by real industrial problems
- Train MSc students as PDEng
- Knowledge exchange company - UT



**UNIVERSITY
OF TWENTE.**

