



HORSES and WATER - Students as Partners Workshop

Gyan de Haan, Titus Venverloo, Luuk Groot Koerkamp,
and Hans van den Berg

j.vandenberg-1@utwente.nl

UT Educational Day, 19 October 2017

The programme

A short yet broad introduction

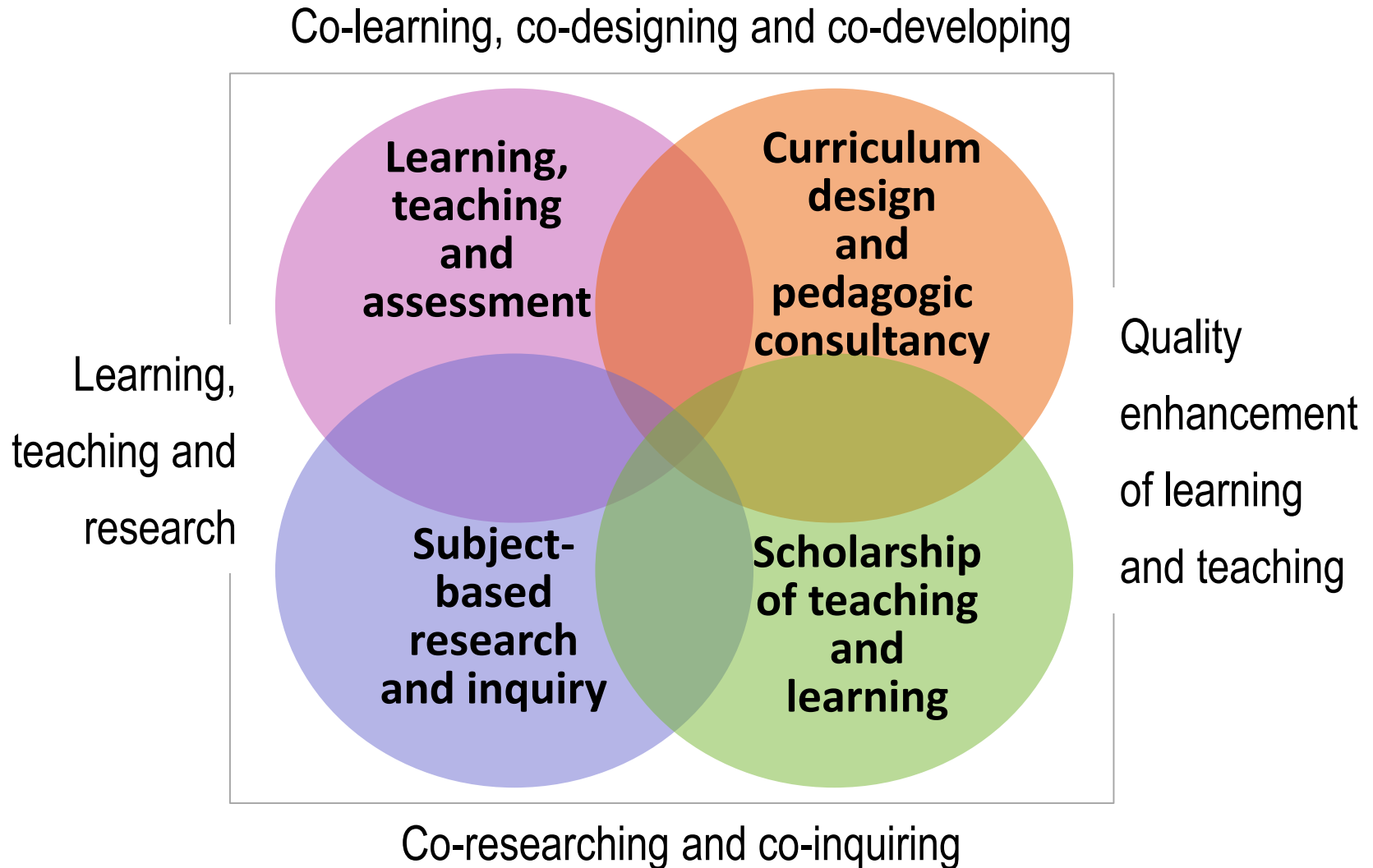
- Who are we
- Some theory
- Student 'activism' at the UT
- Some examples of Students as Partners
- A bit of research we did
- Introducing your table hosts
- About the 'slow dating'

Slow dating

- Some findings (by table hosts)

Students as Partners

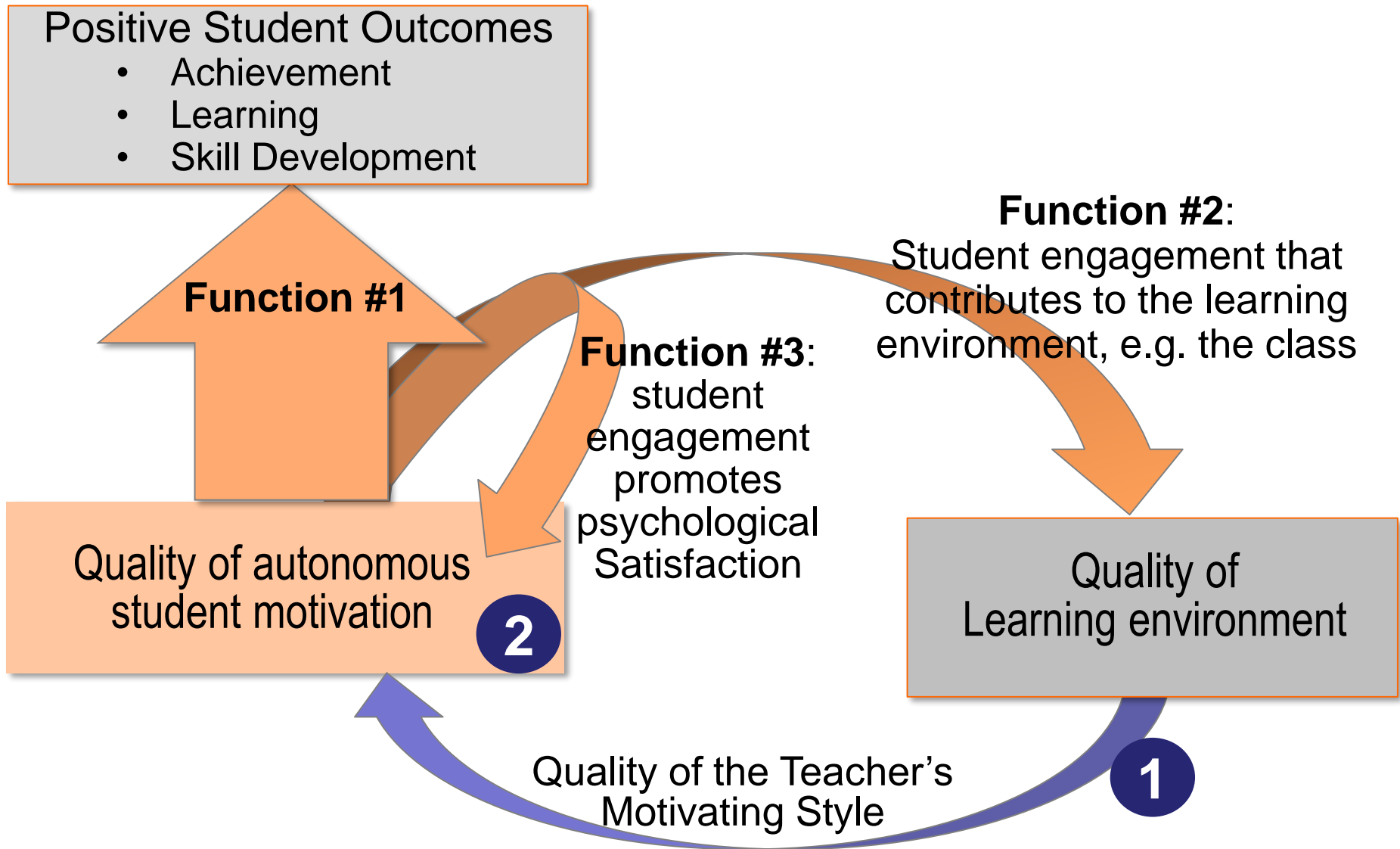
Four quadrants by Mercer-Mapstone et al.



Lucy Mercer-Mapstone et al., *A Systematic Literature Review of Students as Partners in Higher Education*. IJSAP vol.1 nr.1 2017

Self-Determination Theory (Reeve, 2012)

In Summarised form



Student Activism at UT already is significant

In money terms:

- 1.7 Million EUR per year (gross) of student assistant contracts
 - Equivalent to 135,000 hours
- Student Union annual budget (2014): 2.5 Million EUR

In engagement terms:

- Many students work in e.g. committees and boards

Students as Partners is directly related to education and research - and also to valorization.

Some examples of recent SaP activities

From Hans van den Berg's involvements

What	Who	Where
Students to engage in 1 st alumni research	Veronica Junjan (module coordinator)	EPA M5, 2017-2018
Invitation to SaP to students	Educator/educational researcher Sandor Löwik (BIG grant winner of 2017)	Premaster course (IEM), 2017-2018
Preparation for reaccreditation	A full Programme Committee	MSc programme of BMS
A Student engagement survey (2016)	A team of Commissioners of Educational Affairs of Study Associations	Project group of UT's Platform on Quality
Pre-delivery reviewing of a new bachelors' module	Three TBK students reviewed a design made by Sandor Löwik	TBK M11
Redesign part of a BSc's module based on Threshold Concepts	Luuk Groot Koerkamp (student) with prof. Kees Venner	ME M7 2016-2017
Delivering a Threshold Concepts workshop for CELT	Jelle Neeft (student) Luuk Groot Koerkamp (student)	EEMCS – AM ET - ME
Reviewing the then new SEQ (BSc programmes)	Large groups of students	UT's Platform on Quality

We did a bit of research on Students as Partners

“It helps my personal development. But: there’s luck involve, and there’s no recipe. That makes case descriptions rather creepy ”

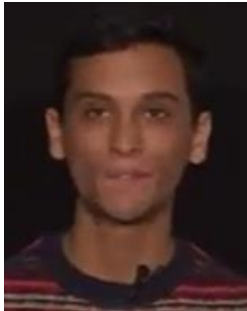
“Co-shaping various aspects of learning leads to productive and effective outcomes. Involvement, as a student, in a process from which a student normally is excluded, creates respect and appreciation”



“It is enriching and very nice to become involved in policy”

“Addressing someone as Professor makes what (s)he says more important than what I say”

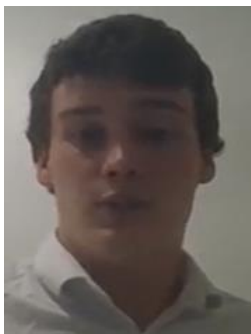
These are your table hosts



Gyan de Haan
UCT ATLAS BSc Student
**Collaborating in marketing (communication),
and designing lectures**



Luuk Groot Koerkamp
Mechanical Engineering MSc Student
**Collaborating in designing and delivering Heat
Transfer education using Threshold Concepts**



Titus Venverloo
UCT ATLAS BSc Student
**Collaborating in research and initiating it, and
designing lectures**

You can engage in 'slow dating', now

- Each table has a fixed table host
- Please break up into subgroups of roughly the same size
- Each subgroup goes to a separate table
- Engage in discussion with all present – and try to get the best out of your table host
- Your table host will capture the conversation

- At a sign (from Hans) the subgroups **switch table** with the same activities as above

- Again at a sign, the subgroups again **switch tables**

- This is the slow date