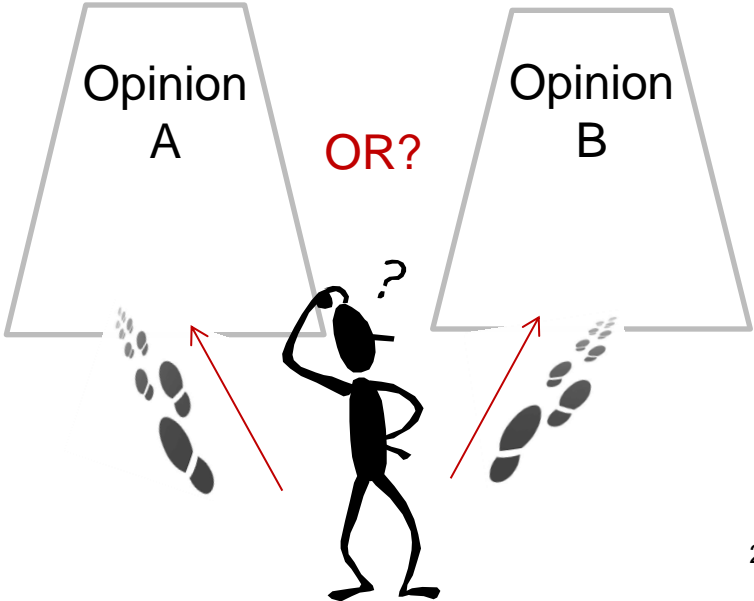
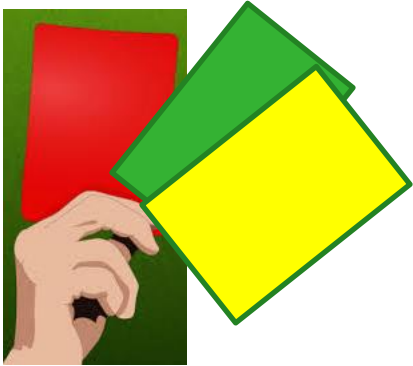


Online VOTING

- Marije Hahnen (ES/OD)
- Silvie Pothof & Marloes Jansen (BMS)
- Matthieu van der Heijden (BMS)



What voting method do you use?



Workshop

- Introduction of voting tools > Marije Hahnen (ES)
- Demonstration Shakespeak > Silvie Pothof & Marloes Jansen (BMS)
- Demonstration Socrative > Matthieu van der Heijden (BMS)

About voting ...



- What?

Asking questions or posting statements during lectures.

- How?

Several voting methods ...

This workshop > demo of two digital voting tools

- Why?

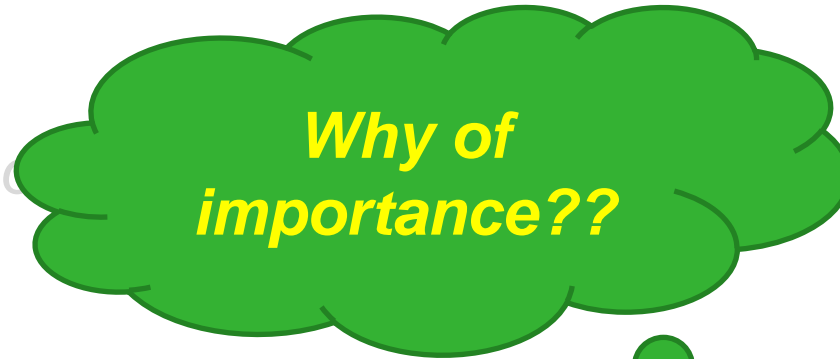
Activate/engage students (-more-) during lectures

About voting ...



- What?

Asking questions during lectures.



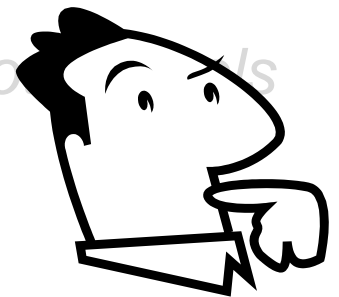
- How?

Several voting methods ...

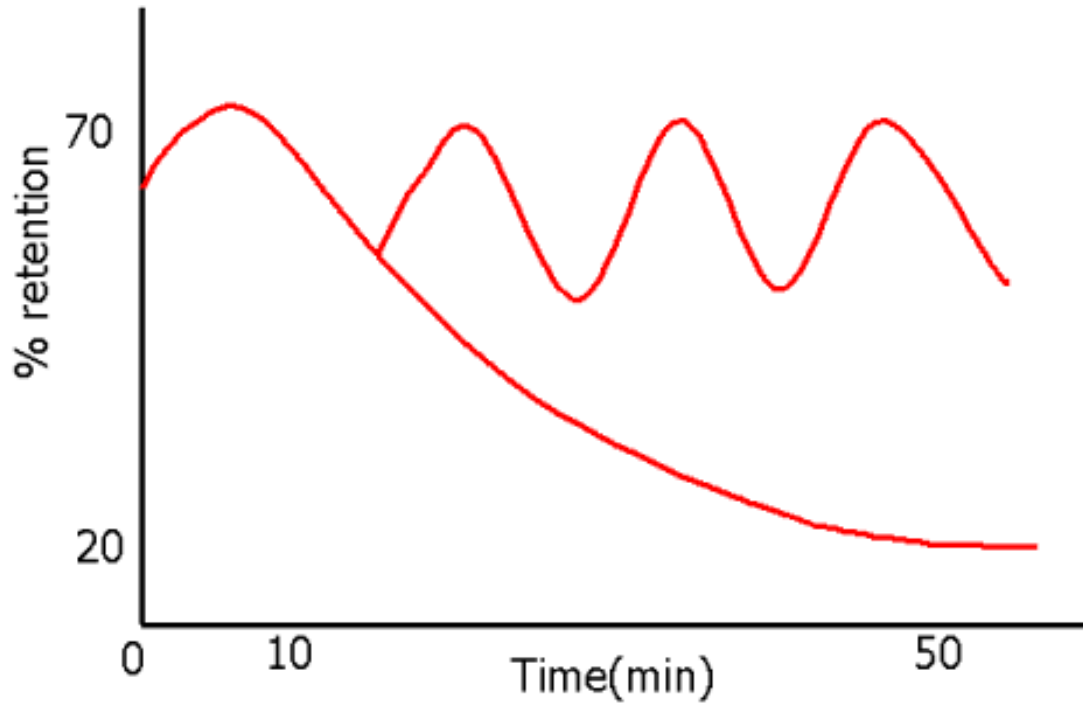
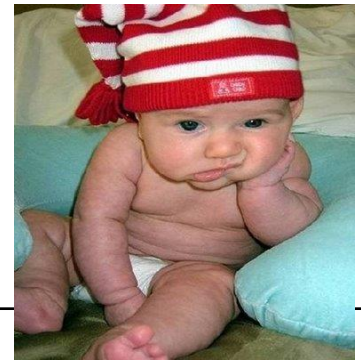
In this workshop > introduction of two online voting methods

- Why?

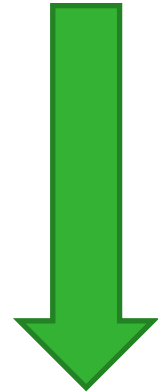
Activate/engage students (-more-) during lectures



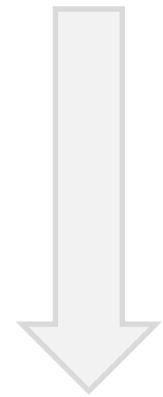
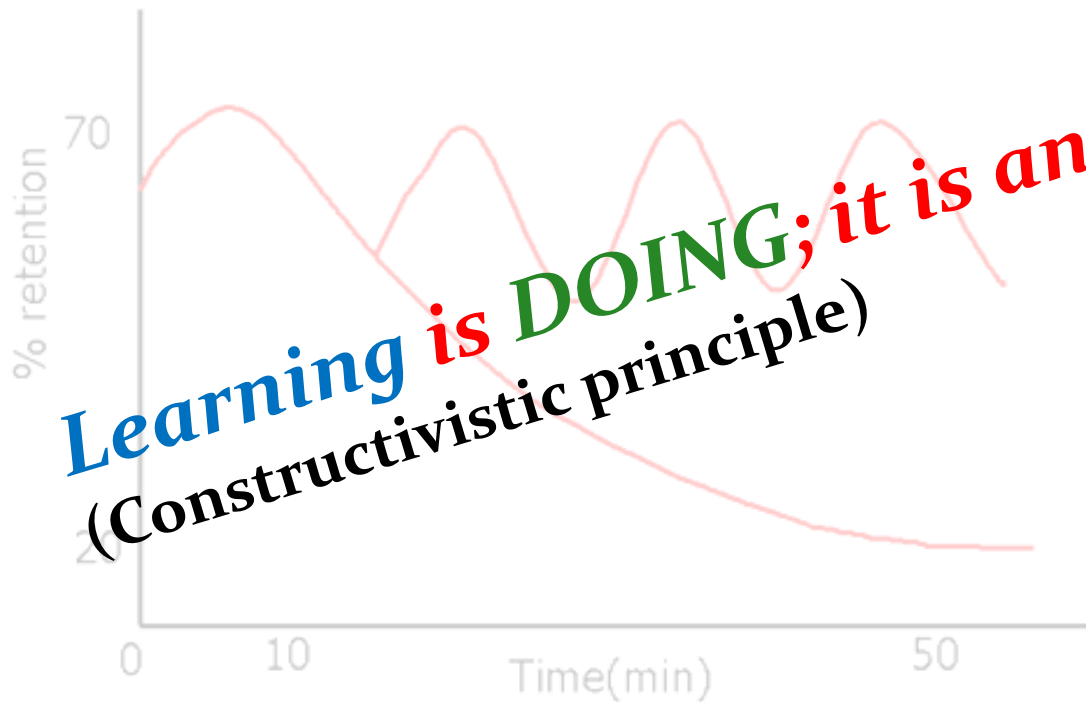
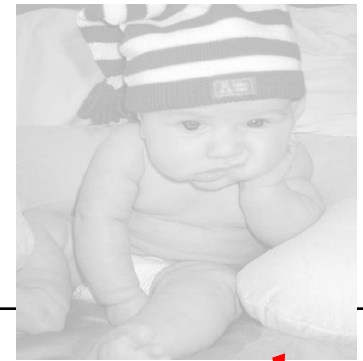
Why Activating students??



("Oh now I have to DO something")



Why activating students??



Educational functions of Voting:

- **Motivational function:**
 - *Activating prior knowledge*
 - *Starting group discussion: who has ever/ what's your opinion...?*
- **Test function: testing knowledge of students**
 - *Start: check prior knowledge*
 - *During: check if message is understood*
 - *At the end*
 - **Adaptive function:** adjust program (*repeat/ continue/skip*)
- **Evaluative function:**
 - *Evaluation of lesson/ course/ topics etc.*

Other characteristics of digital voting:

- Fun
- Anonymous
- Provides clear answers (*A,B,C/ 1,2,3 etc.*)
- Clear how many students answered (*“29 out of 35”*)
- ...

Requirements

- Teacher > computer (beamer/screen)
- Students > device per student (mobile/tablet/laptop)
- Internet connection (WIFI)



Support Educational Services:

- Voting [tool-analysis](#): characteristics/ possibilities (check website)
- Shakespeak contract for UT-teachers > personal account
- Advice & manual

Questions/ account request:

➤ voting@utwente.nl

➤ www.utwente.nl/ces/od/onderwijsinnovatie/telt/voting

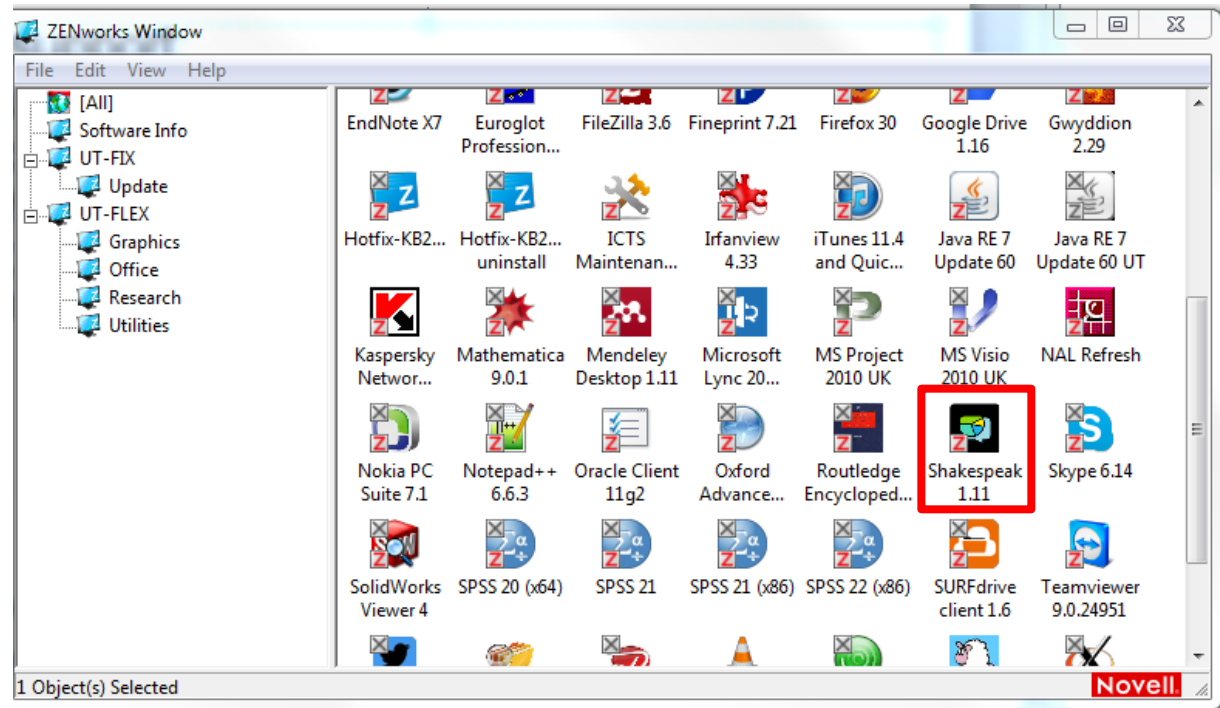
	Suitable for voting	Groupsize	Integrated with MS PowerPoint	Operating system	Reporting available	Notes
Shakespeak www.shakespeak.com	In class	Unlimited	Yes, is necessary for proper use	Windows only	Yes	Unlimited use with official UT license. Installation of plugin for PowerPoint is necessary (see manual). Open and closed questions. View responses immediately on screen. Anonymous input possible.
Socrative www.socrative.com	In class	<50	No	Any modern browser on most devices and operating systems	Yes	Open and closed questions. Immediately view responses from single question activities only on screen. Ready to use within 5 minutes (web-based).
Mentimeter www.mentimeter.com	In class	Unlimited	No	Any modern browser on most devices	No	Open and closed questions. View responses immediately on screen. Ready to use within 5 minutes (web-based).
Soapbox www.gosoapbox.com	In class	<30	No	Any modern browser on most devices	Yes	Open and closed questions. Non-anonymous input only. Barometer tool available. View responses immediately on screen from poll and discussion, not from quiz.
Google Forms drive.google.com	Out of class	Unlimited	No	Any modern browser on most devices	Yes	Open and closed questions. Advanced options for questions and presentation of results.

- See also:

<http://www.utwente.nl/ces/od/onderwijsinnovatie/telt/voting/>

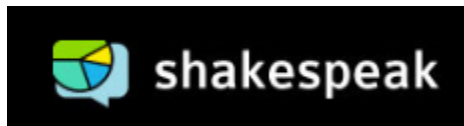
UT Support > Shakespeak support

- ICTS & FB: providing UT-computers with Shakespeak plug-in (ZEN works)



Next...

- Silvie Pothof & Marloes Jansen



- Matthieu van der Heijden

