



**DCC**

UNIVERSITY  
OF TWENTE.



# UNIVERSITY OF TWENTE.

**DIGITAL COMPETENCE CENTRE (DCC)**

DR. WENDY VAN GINKEL, HEAD OF EMBEDDED INFORMATION SERVICES (LISA) / UNIVERSITY LIBRARIAN



# DIGITAL COMPETENCE CENTRE (DCC)

- The DCC is a **network organization of expertise** on:
  - Research Data Management (RDM)
  - ICT for Research (infrastructure, tools, software) & Digitization of science
  - Open Science
- The DCC aims to aid you in making:
  - your research (process): open, reproducible, and transparent
  - your publications Open Access
  - your research data FAIR: Findable, Accessible, Interoperable, Reusable
  - your research easier, faster, and more efficient with state-of-the-art technology
  - technological tools for (inter)national research cooperation more secure and user friendly.



# DCC SERVICES

- **Services, tools, and guides**

- [Data management plan tool and writing support](#)
- [Decision tool managing research data](#)
- [Data analysis and visualization tools](#)
- [Effective planning and budgeting of RDM costs](#)
- [Archiving research data](#)

- **Courses and training**

- Research Data Management bootcamp course (obligatory for PhD candidates)
- Handling personal data in research
- Software Carpentry Workshops (next edition: May 30 – June 2<sup>nd</sup> 2023)
- Micro-lectures on Research Data Management



# DCC SERVICES

- **Collaborative initiatives**
  - UT-internal and external
  - OSCT & DCC (joint thematic sessions)
  - Open Science Week
- **DCC newsletter**
- **Collaboration with 4TU.ResearchData**
- **Connection to Thematic Digital Competence Centres (TDCC's)**
  - Life Science & Health (LSH)
  - Natural and Engineering Sciences (NES)
  - Social Sciences and Humanities (SSH)

# DIGITAL COMPETENCE CENTRE (DCC)

## DCC GOVERNANCE + ORGANISATION

EB > TOM VELDKAMP

ADVISORY GROUP > UC.OZ

STEERING GROUP > JAN-LAURENS LASONDER  
HENK SWATERS & WENDY VAN GINKEL

## DCC CORE TEAM

FAIR DATA-OPEN SCIENCE-OPEN ACCESS  
RESEARCH ICT FACILITIES  
DIGITALIZATION OF SCIENCE



## RESEARCHER

## CENTRAL SUPPORT

## UT WIDE SUPPORT

## FUNDERS

## NATIONAL / INTERNATIONAL SUPPORT NETWORKS

Data Librarian:  
Maarten van Bentum  
Data Steward FAIR Data:  
Zafer Öztürk  
Data Protection Officer:  
Meike van der Ven – Davids  
Open Access Team:  
Nicole Loorbach  
Roberto Cruz Martinez  
Marco van Veller  
DCC Communication:  
Frank Westerveld

Grants Office  
Twente Graduate School  
Open Science Community  
House of Integrity  
Legal Office

NWO  
ZonMw  
EU

4TU.ResearchData  
VSNU  
DANS  
UKB  
eScience Center  
DCC Implementatie Netwerk  
SURF  
LCRDM  
GO FAIR  
RDNL

## SUPPORT WITHIN THE FACULTY

## TNW

RDM Coordinator:  
Ashit Rao  
Research Policy Officer:  
Nicole Torka  
Data Steward:  
Iris Schutte & Simone van Lin &  
Deniece Nazareth  
Information Specialists:  
Hanneke Becht & Judith Brands  
ICT Accountmanager:  
Tonnie Tibben  
Privacy Contact Person:  
Ashit Rao

## BMS

Manager Research Support Office:  
Marieke van Rooij  
Coordinator Research Support:  
Lyan Kamphuis-Blikman  
Data Steward:  
Qian Zhang & Minsi Li  
Information Specialists:  
Marit van Eck & Roberto Cruz Martinez  
ICT Accountmanager:  
Hendri Hondorp  
Privacy Contact Person:  
Lyan Kamphuis-Blikman  
BMS Lab:  
Jan-Willem van t Klooster

## EEMCS

Research Support Specialist:  
Petri de Willigen  
Data Steward:  
Marianna Avetisyan &  
Shaokang Zhang  
Information Specialist:  
Samuel Mok  
ICT Accountmanager:  
Tonnie Tibben  
Privacy Contact Person:  
Petri de Willigen

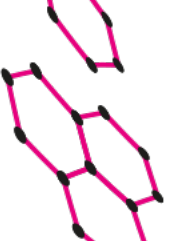
## ET

Manager Research Support:  
Maria Kamp  
Research Support Officer:  
Anne-Marie Klijnstra  
Data Steward:  
Victor Wanningen  
Information Specialist:  
Luuk van Ewijk  
ICT Accountmanager:  
Peter Lasker  
Privacy Contact Person:  
Anne-Marie Klijnstra

## ITC

Research Coordinator:  
Jelle Ferwerda  
Research Support Officer:  
Masoom Shariat  
Data Steward:  
Alice Nikuze  
Information Specialists:  
Marco van Veller &  
Grietha de Jonge  
ICT Accountmanager:  
Ralph Mettinkhof  
Privacy Contact Person:  
Masoom Shariat

UNIVERSITY OF TWENTE.



# DATA STEWARDS



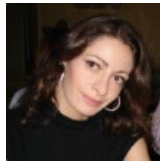
**Dr. Q. Zhang**

Data steward BMS |  
qian.zhang@utwente.nl | Carré 1.337



**M. Li, MSc**

Data steward BMS |  
m.li-2@@utwente.nl | Carré 1.337



**Dr.ir. M. Avetisyan**

Data steward EEMCS |  
m.avetisyan-1@utwente.nl | Carré 1.337



**Dr. S. Kang**

Data steward EEMCS |  
shaokang.zhang@utwente.nl | Carré 1.337



**Dr. A. Nikuze**

Data steward ITC |  
a.nikuze@utwente.nl | ITC 2-131



**Dr. I. Schutte**

Data steward S&T |  
i.schutte@utwente.nl | Carré 1.337



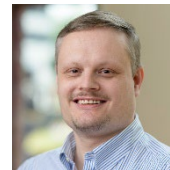
**D. Nazareth, MSc**

Data steward S&T |  
d.s.nazareth@utwente.nl | Carré 1.337



**Dr. S. van Lin**

Data steward S&T |  
s.r.vanlin@utwente.nl | Carré 1.337



**V. Wanningen, MSc**

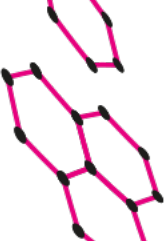
Data steward ET |  
v.r.j.r.wanningen@utwente.nl | Horst Complex T415



**Dr. Z. Öztürk**

Data steward FAIR |  
z.ozturk@utwente.nl | Carré 1.339





# NEED HELP WITH YOUR DATA?

## CONTACT YOUR RESEARCH DATA STEWARD

- ➔ Research data
- ➔ Data management policy
- ➔ Data management plan
- ➔ Data management sections of grant proposals
- ➔ Data storage and sharing
- ➔ Long-term archiving
- ➔ Making research data and software FAIR
- ➔ Publishing data sets
- ➔ Data handling





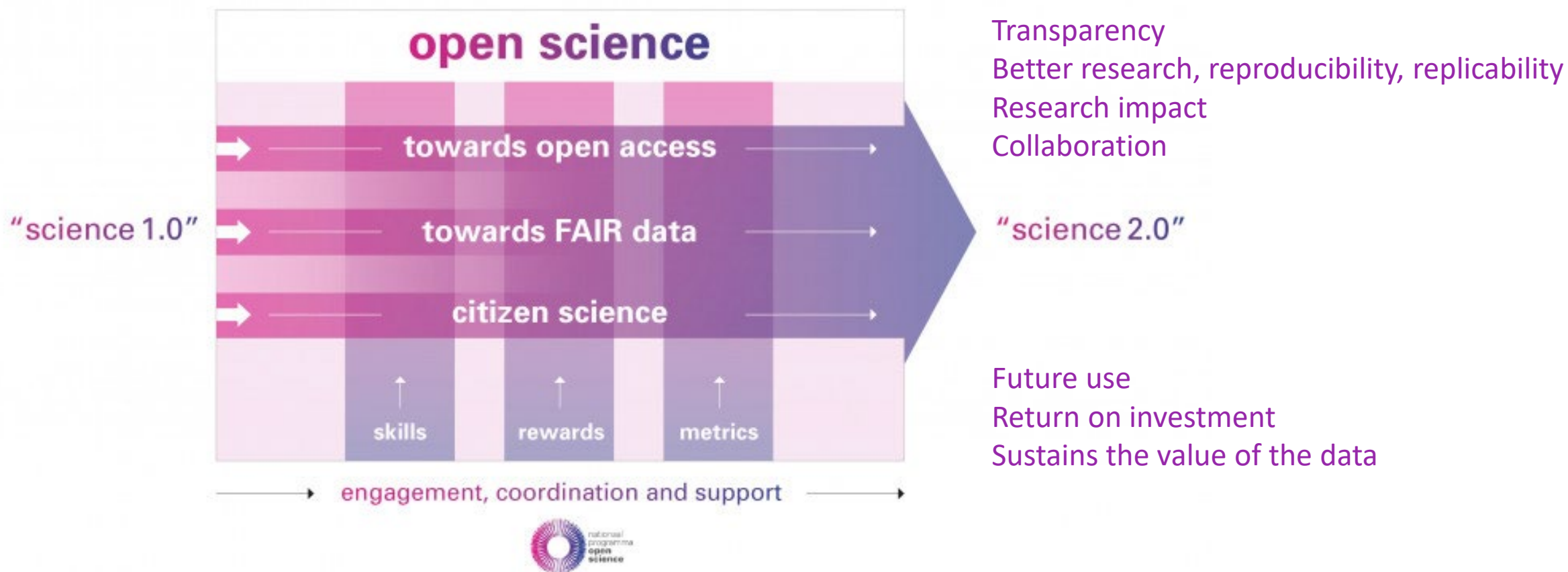
# DCC AND OPEN SCIENCE

*In our shared journey towards Open Science, DCC helps to translate needs of researchers into innovative ICT & RDM support services.*

*As a network, we want to support UT researchers and connect them with expertise and services elsewhere inside and outside our university. We work closely with researchers on optimal solutions with a focus on innovation.*



# DIGITAL COMPETENCE CENTRE





**Thank you!**

Find the UT DCC on:

<http://www.utwente.nl/dcc>



**Digital Competence Centre,  
University of Twente**



**@UTwenteDCC**