

DECISION TREE STORE, SHARE AND COLLABORATE RESEARCH DATA DURING RESEARCH RESEARCH SUPPORT

DECISION TREE

A decision tree helps to make a decision what service can be used to store, share and collaborate with Research data during your research.

SEVEN QUESTIONS

1. Is your research data confidential or non-confidential?

- a. Confidential b. Non-confidential



2. Which handling of your research data is a requirement? (Transfer, Store only, Store and Share)

- a. Transfer b. Store only c. Store and Share

3. Preferred location of storage (UT, NL, EU, rest of the World)

- a. Data Center University of Twente b. Data Center in the Netherlands
 c. Data Center in EU d. Data Center somewhere

4. Amount of research data to store, transfer or share.

- a. < 10 GB b. < 1TB c. Unlimited (with quota) d. Unlimited

5. Is a free of charge service a requirement?

- a. Yes b. No

6. What type of service is a requirement?

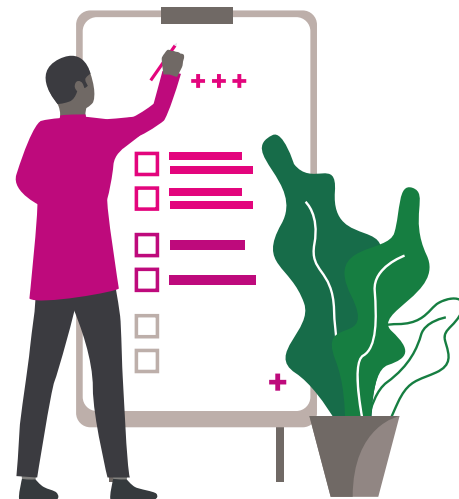
- a. Network share b. Personal Cloud c. Project Cloud d. Transfer data safely

7. Is your research data related to the faculty of BMS and is the project in line with the vision and broad scope of BMSLAB?

- a. Yes b. No

POSSIBLE SOLUTIONS

- | | | |
|--------------------------|-------------------------|--|
| - UT Group/Project drive | - OneDrive for Business | - DataverseNL |
| - UT BMSLAB | - Research Drive | - SURFfilesender |
| - SURFdrive | - Microsoft Teams | - UT Version Control System and Gitlab |
| - Google Workspace | - Sharepoint | |



GO TO DECISION TREE



Answer the above questions on this site and a solution is advised:
<https://webapps.utwente.nl/dmp/fr/RDM/Storage-Decision-Tree/new>