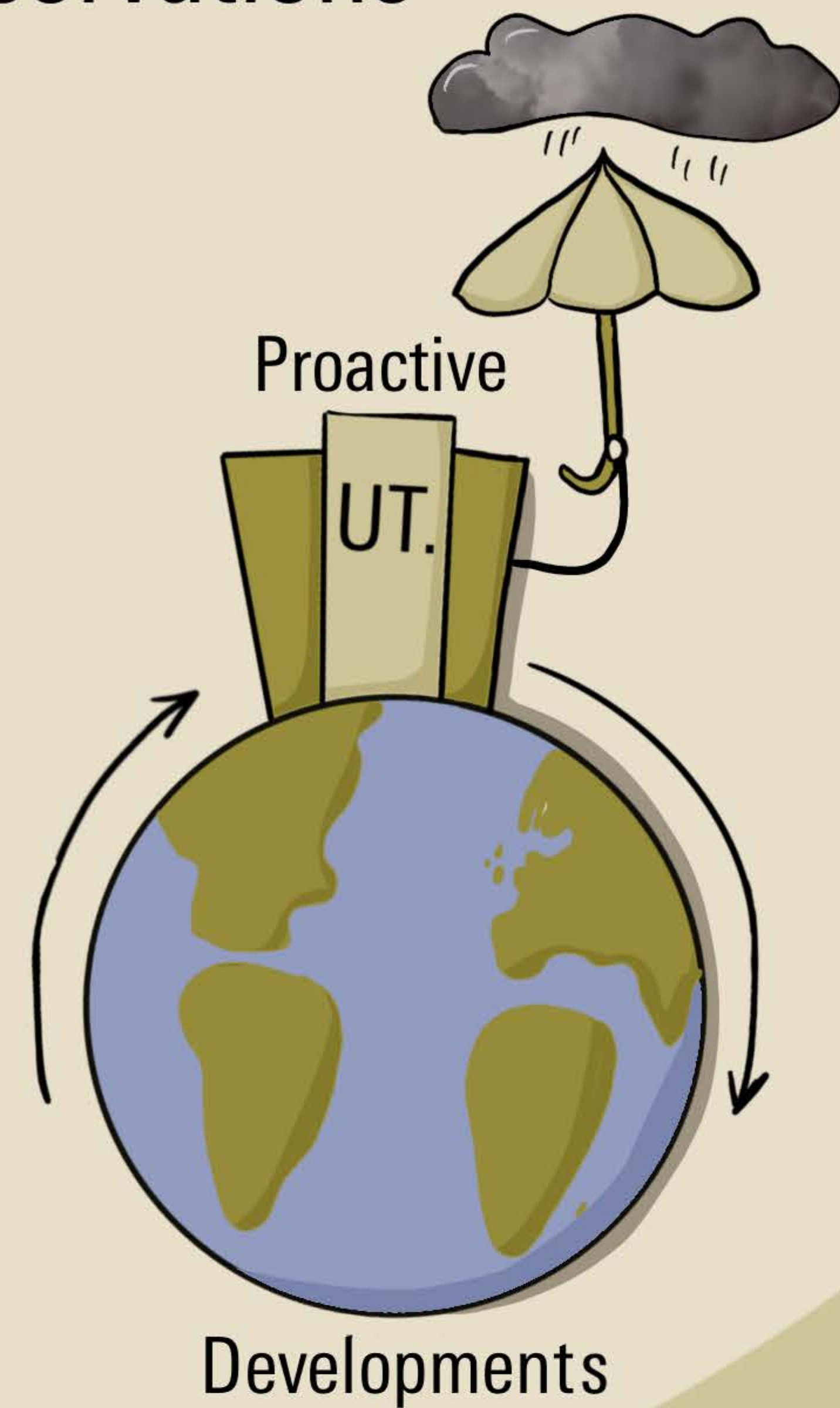
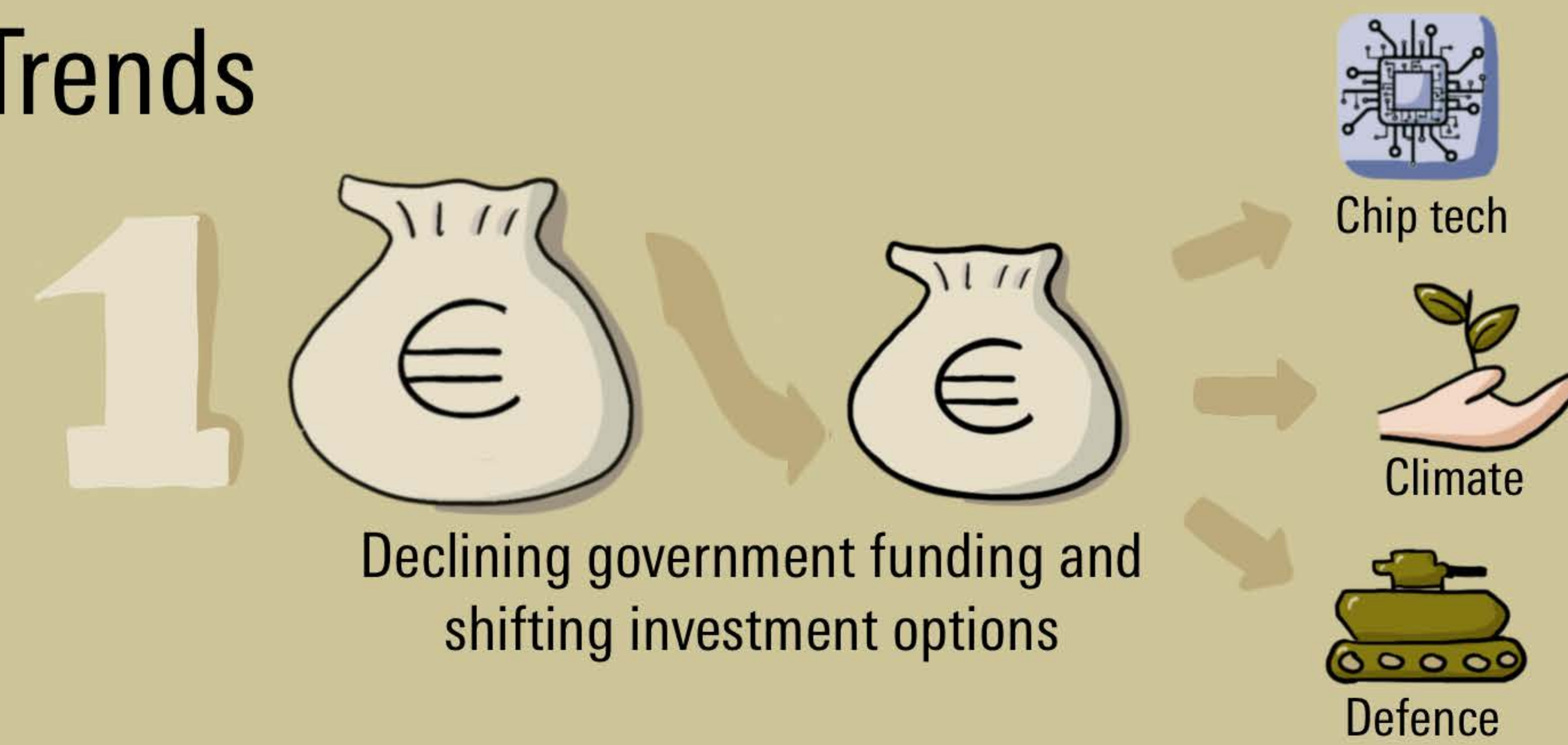


October 2024: key trends and advices

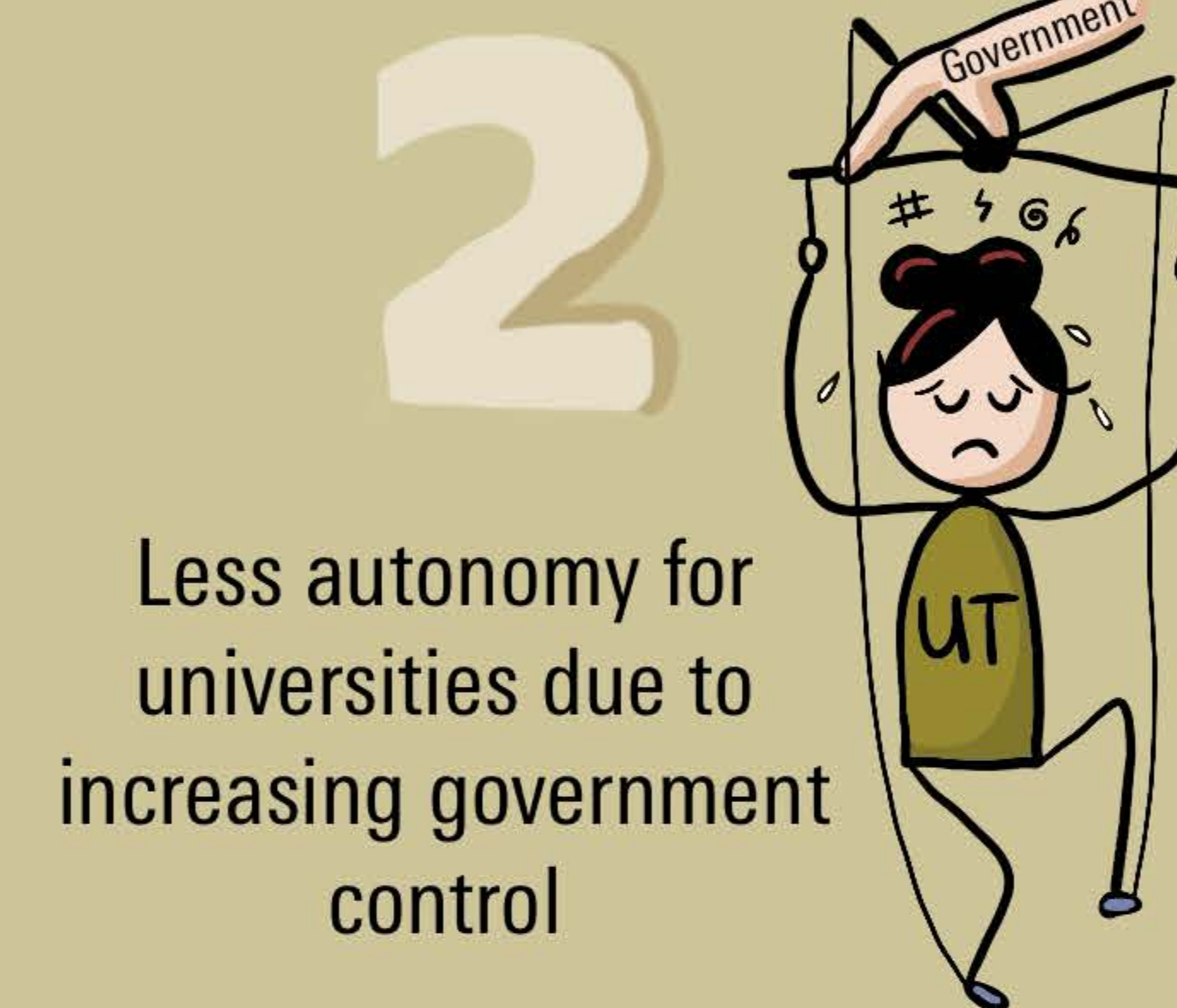
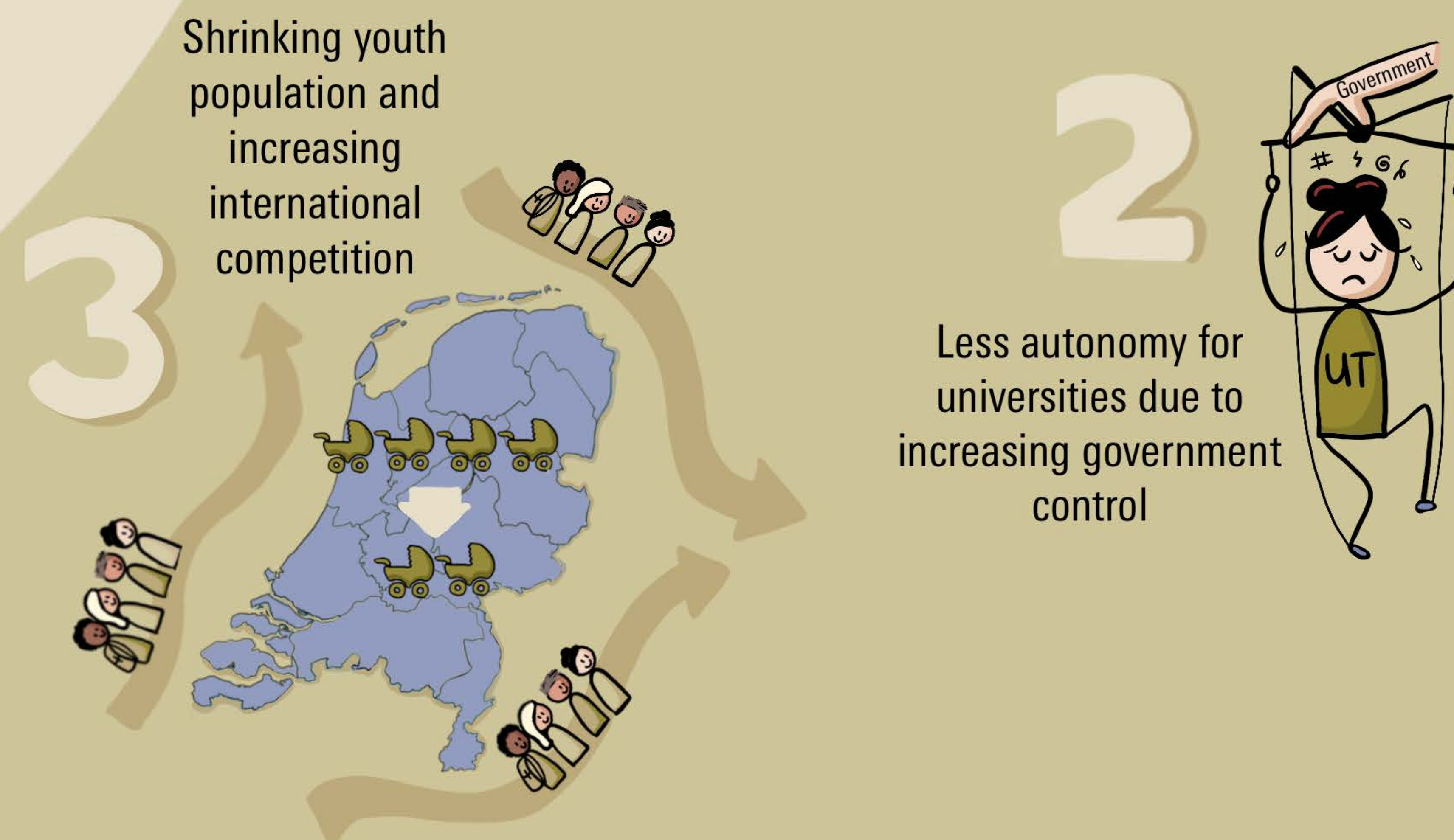
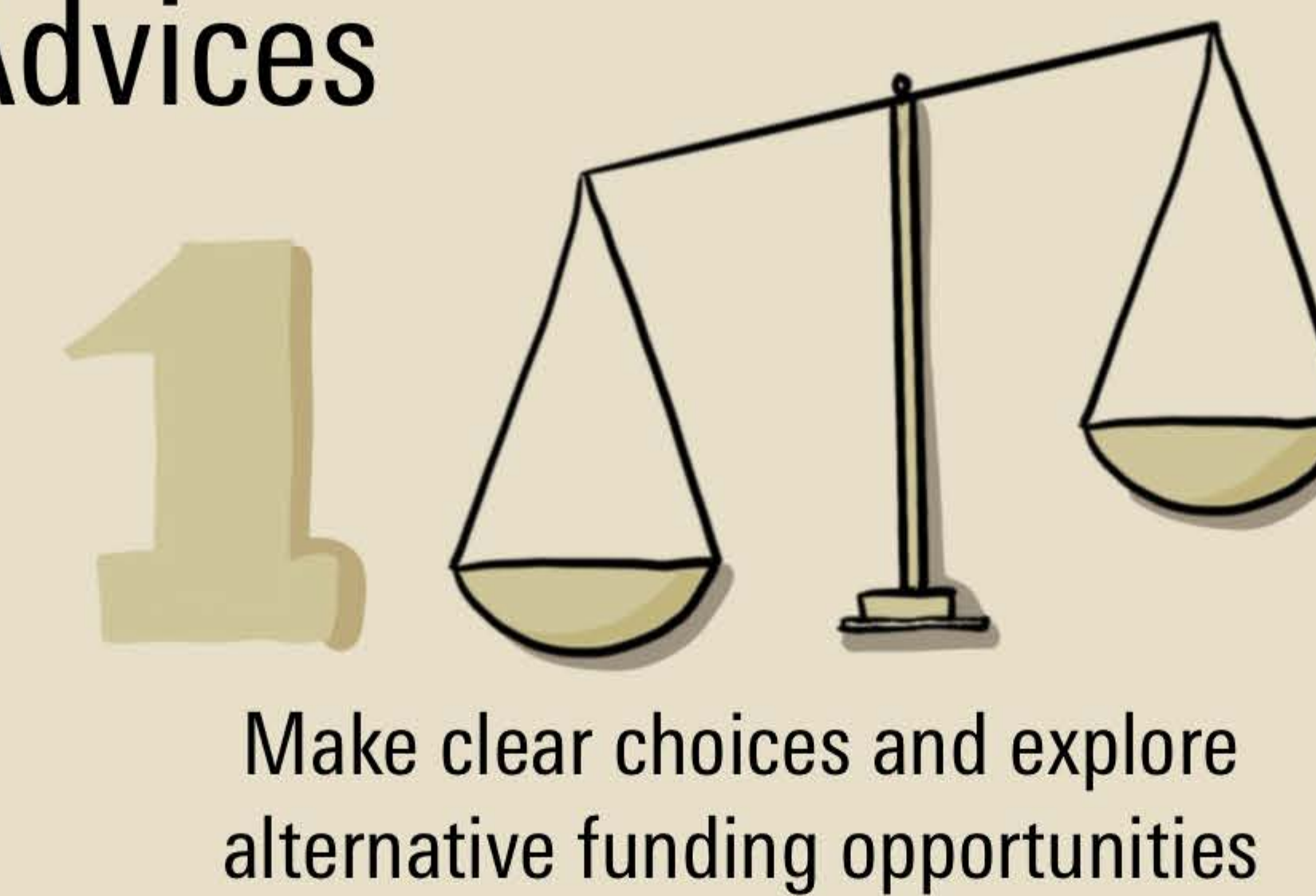
Observations



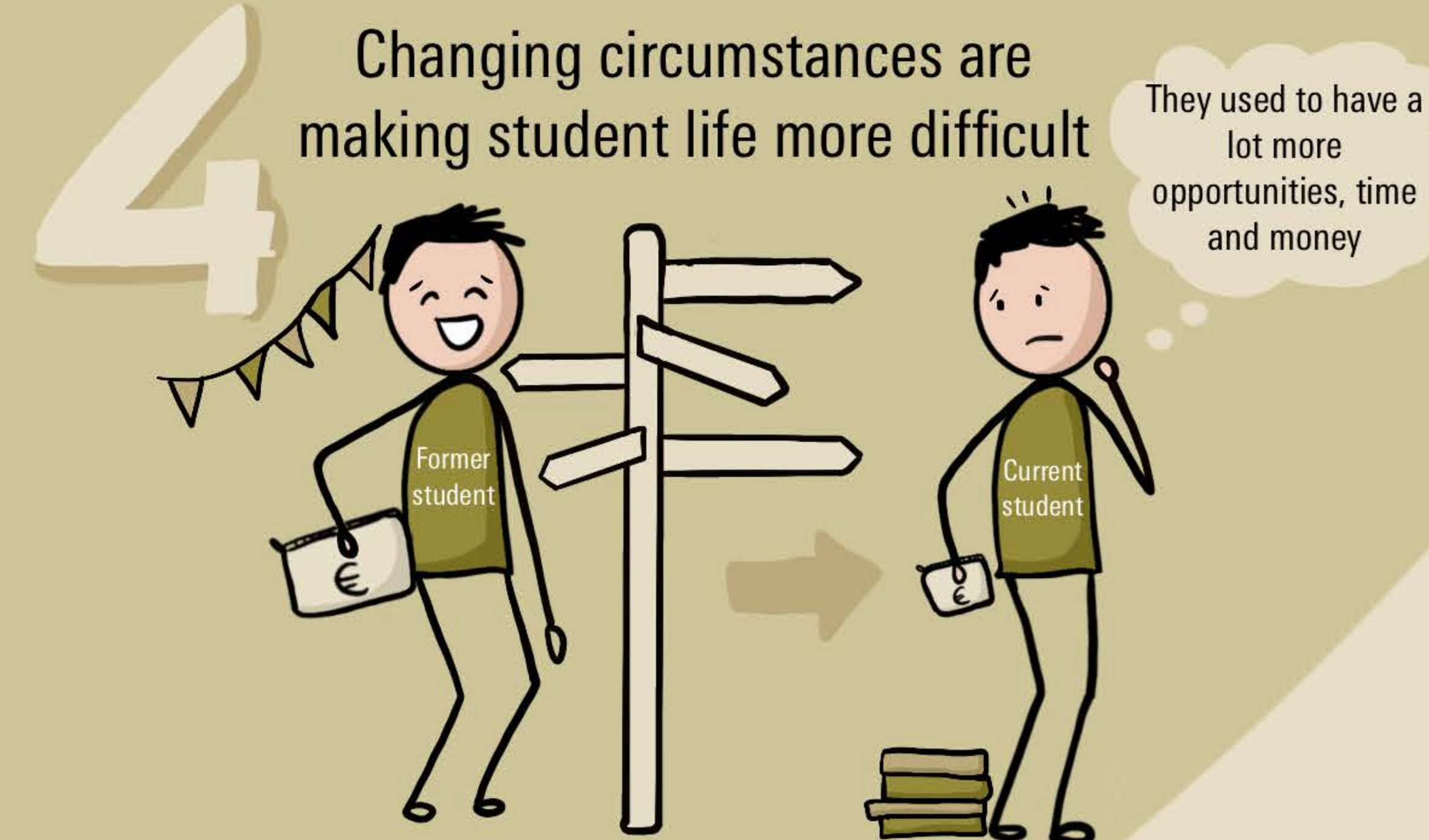
Trends



Advices



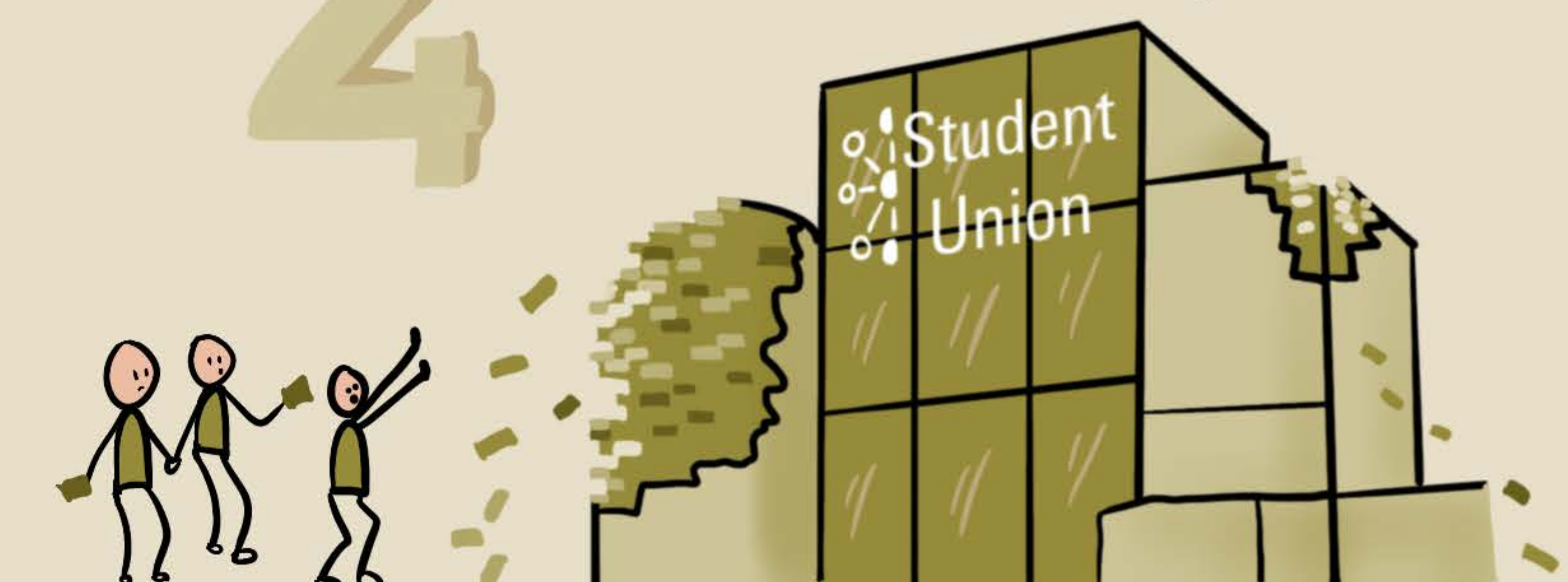
5 Increasing pressure on university staff due to internal and external tensions



5 Collaborate internally and also engage externally



4 Explore how UT can uphold the concept 'more than a degree'

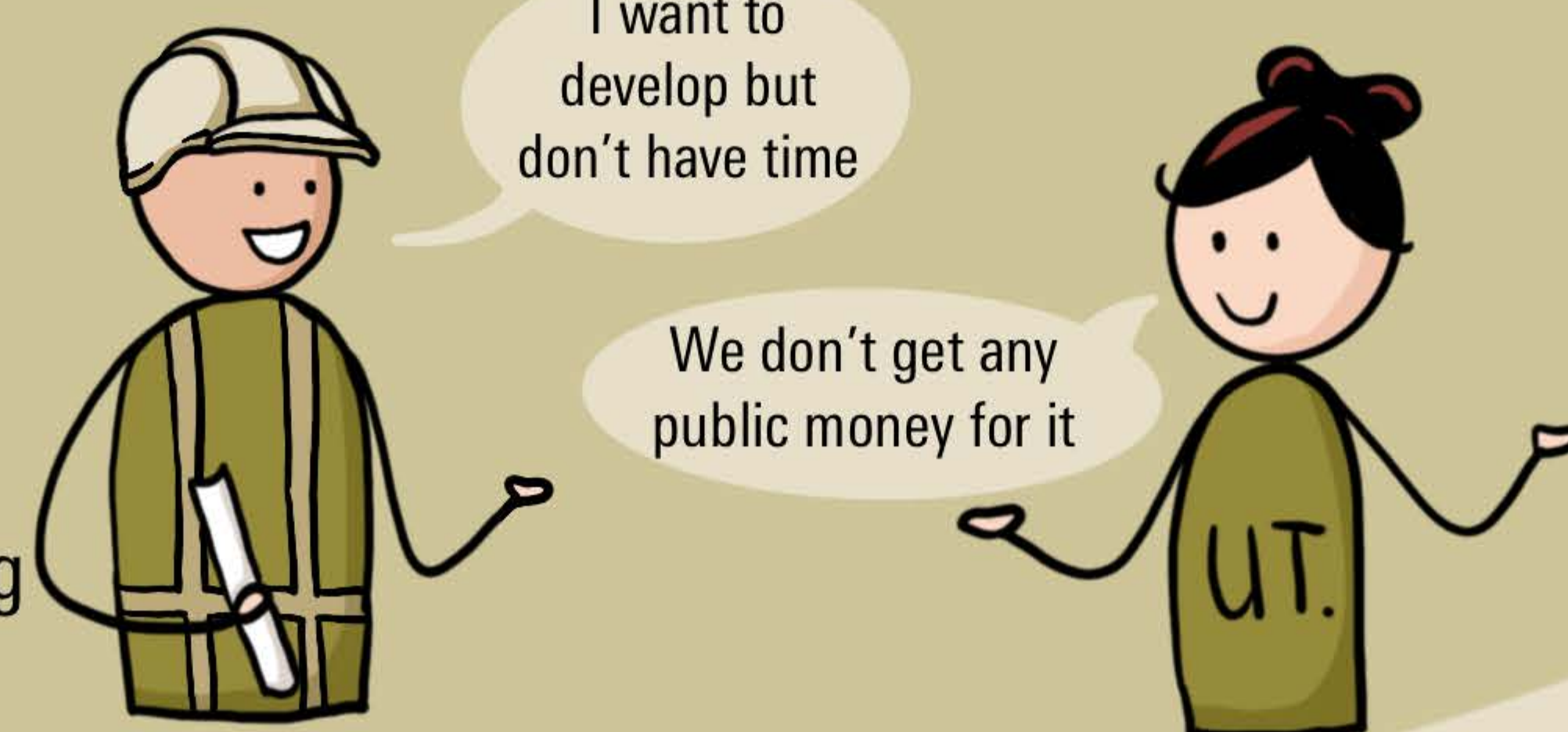


6 Challenges surrounding lifelong learning

I want to develop but don't have time

We don't get any public money for it

UT.



6 Be pragmatic in developing LLL offerings

