A photograph of three students sitting on blue steps outdoors. A young man in a teal polo shirt and black pants sits on the top step, smiling. A young man in a white polo shirt with sunglasses and blue jeans sits on the middle step, smiling. A young woman in a grey sweater sits on the bottom step, looking up and smiling. The background shows greenery and a building.

MASTER OF SCIENCE DEGREES

ACADEMIC YEAR 2022 - 2023

UNIVERSITY OF TWENTE.

OUR CAMPUS



8

LIVING IN THE NETHERLANDS AND IN ENSCHEDE



12

JOIN OUR ONLINE OPEN DAY

Experience our university
from the comfort of your home!

[UTWENTE.NL/OOD](https://utwente.nl/ood)

INTERNATIONAL TALENT



18



OUR FOCUS ON SOCIETAL CHALLENGES

6

YOU CAN CALL US 'UT'

Our full name is University of Twente, but feel free to call us 'UT'!



WORK OUT!

14



WHAT WILL YOUR FUTURE LOOK LIKE?

20

CONTENTS

Ready to get a master's degree?	4
Rankings	4
Our focus on societal challenges	6
Our campus	8
2,122 excellent scientists & 384 lab facilities on campus	10
Living in the Netherlands and in Enschede	12
Work out!	14
Double your knowledge, network, and potential	16
International talent	18
What will your future look like?	20
When you need a helping hand	22
After your master's	24
Our graduates	26
Get ready. Get set. Apply!	28
Admission	29
What about the money?	30
Congrats, you're in! Now what?	32
Find accommodation	34

Our master's 37

Applied Mathematics • Applied Physics	38
Biomedical Engineering • Business Administration	39
Business Information Technology • Chemical Science & Engineering	40
Civil Engineering & Management • Communication Science	41
Computer Science • Construction Management & Engineering	42
Educational Science & Technology • Electrical Engineering	43
Embedded Systems • Environmental & Energy Management	44
European Studies • Geo-Information Science & Earth Observation	45
Geographical Information Management & Applications • Health Sciences	46
Industrial Design Engineering • Industrial Engineering & Management	47
Interaction Technology • Mechanical Engineering	48
Nanotechnology • Philosophy of Science, Technology & Society	49
Psychology • Public Administration	50
Robotics • Science Education & Communication - Teacher Education Programme	51
Spatial Engineering • Sustainable Energy Technology	52
Systems & Control • Water Technology	53
Technical Medicine	54

Transdisciplinary Master-Insert 'Shaping Responsible futures'	56
Professional Learning & Development Centre	57
CuriousU summer school	58
Campus overview	59

READY TO GET A MASTER'S DEGREE?

WELCOME TO THE UNIVERSITY OF TWENTE
IN ENSCHEDE, THE NETHERLANDS!

Are you currently busy scanning the globe for a university offering you the perfect programme and environment? Allow us to introduce an exciting option. The University of Twente offers a wide range of high-quality, internationally oriented master's. Studying with us will give you excellent international experience and good job opportunities.

HIGH TECH HUMAN TOUCH

The University of Twente (UT), while relatively small in scale, is one of the world's leading universities. Our innovative research programmes enjoy worldwide renown. We are highly skilled at connecting people, technology, and real-world issues. Our distinct entrepreneurial spirit ensures that the knowledge developed on our beautiful, park-like campus is put to use via commercially viable activities. Our tagline, 'High Tech Human Touch', reflects how more than 12,000 students and 3,700 staff members engage not only in developing pioneering technologies but also in combining them with behavioural research, social sciences and economics. This interdisciplinary approach is one factor that makes us stand out from other universities and makes our graduates the problem-solvers of the future.

STUDY AT THE MOST ENTREPRENEURIAL UNIVERSITY

Since its founding in 1961, UT has become an international platform for talent, attracting more and more students from across the world. Already recognised as the most entrepreneurial university in our own country, our next step is to become Europe's most entrepreneurial university. We like students and staff who have the ambition to make a difference in the real world, using technological insight to tackle the challenges people and societies are facing today. We see entrepreneurship as an effective form of technology transfer or valorisation. This is why we invest in people and their personal development. Over the past two decades alone, our university activities have led to the creation of over 1,000 spin-off companies. As a master's student, you will be encouraged at our university to develop an entrepreneurial spirit and to cross boundaries. The interaction between people and technology is an exciting field of research – and we are at its forefront.

RANKINGS

ACHIEVING BETTER RESULTS EVERY YEAR

For the fourth time, our university has been awarded the title of Most Entrepreneurial University in the Netherlands. We are also proclaimed the university with the most societal impact. Both titles were announced by ScienceWorks and based on public sources and information handed by universities. The QS World University Rankings ranks us among the top 200 universities worldwide.

According to I-graduate, our university is ranked the number one university worldwide regarding Internet access on campus, campus environment and campus buildings as well as visa advice. We were also ranked in the top five universities worldwide when it comes to our laboratories.

201-250
TIMES HIGHER
EDUCATION
RANKINGS (THE)

OVERALL RANKING FOR 2021

189
QS WORLD
UNIVERSITY
RANKINGS

OVERALL RANKING FOR 2022

4TH TIME
MOST
ENTREPRENEURIAL
UNIVERSITY IN
THE NETHERLANDS

OVERALL RANKING FOR 2020

1ST
UNIVERSITY
WITH THE
MOST SOCIETAL
IMPACT

OVERALL RANKING FOR 2020

”

I have always had a desire to study abroad. I believe that studying abroad will be a highly rewarding experience that will benefit my career and personal development. I chose UT because it is ranked highly and is renowned for its technical studies. UT also has a well designed technical programme with a strong focus on practical applications, interdisciplinary collaboration with other technical studies and excellent career opportunities.



HENI JU, INDONESIA

MASTER'S STUDENT IN MECHANICAL ENGINEERING



OUR FOCUS ON SOCIETAL CHALLENGES

In an unpredictable and rapidly changing world, we focus all of our education and research on developing relevant answers for the following societal challenges.

#INTELLIGENTMANUFACTURING

Creating intelligent manufacturing systems and leading the way in combining production technology, ICT, supply chains, and business modelling to create a more circular economy.

#RESILIENTWORLD

Engineering for a resilient world by combining three vital knowledge domains – data, technology, people – that can help us end poverty and sustainably manage climate change, production, and consumption.

#DIGITALSOCIETY

Engineering our digital society and helping society manage the shifts and shake-up caused by digitalisation, for example through reliable digital systems, well-informed decision-making, and explainable data analytics.

#HEALTHTECH

Improving healthcare by personalised technologies, as illustrated by our pioneering role in early detection and targeted treatment of diseases and increased patient independence.

#SMARTMATERIALS

Shaping our world with smart materials that offer functionalities not yet found in the physical world, for example, by leading the way in nanotechnology and biomedical materials.



”

After studying Natural Sciences at the University of Twente, I did research at the University of California, Berkeley for a couple of years. I had a strong personal interest in controlling materials on various scales and wanted to do something innovative, contributing to a breakthrough on an important social issue. Energy is one such issue. In Twente, my research builds a bridge between fundamental research and practical applications with the hopes of adding my bit to renewable energy. I enjoy my work: every day I can come up with and manufacture the craziest combinations of materials – and in this way make discoveries that may be very important for us and our children.

**DR MARK HUIJBEN**

ASSOCIATE PROFESSOR FOR NANOMATERIAL
FOR ENERGY CONVERSION & STORAGE

”

For a long time, technology has mainly focused on the basic form of speech recognition: on what a person says. However, I feel automatic speech recognition is ready for the next level. For me, the interesting part is the layer beyond words, the emotions or mental state of a speaker. Are both speakers on the same page? What is the meaning of a certain laugh? That's important information because in communication it's all about nuance. About silences, a sigh, or a laugh of a person. My ultimate goal is to have a normal conversation with a machine. As if talking to a human being.

**DR KHIET TRUONG**

ASSISTANT PROFESSOR HUMAN MEDIA INTERACTION

”

What I did in space robotics at macro level is the same as what we do with surgical robots at micro level: using robotics to tackle seemingly unsolvable problems. For me, another thing the two fields have in common is the fact that you cannot make mistakes in either area. This makes my work really challenging. The ability to cope with the pressure comes with time. I have learnt to sit quietly, think deeply and wait for the solution to present itself – even if weeks and months go by without anything visibly happening. Staying motivated is not always easy, but as the years go by you learn, and you grow in confidence that the process will eventually bear fruit.

DR SARTHAK MISRA

PROFESSOR IN THE DEPARTMENT OF BIOMECHANICAL ENGINEERING,
HEAD OF THE SURGICAL ROBOTICS LABORATORY

OUR CAMPUS

UNIQUE IN THE NETHERLANDS

One of University of Twente's crown jewels is undoubtedly our campus. A sustainable, well maintained parkland dotted with top facilities, the campus has as many activities to offer as a small city. It's a dynamic community to live and work in, where more than 12,000 students and 3,700 staff members – representing around 100 nationalities – use the latest knowledge and technology for a better future. And this campus could also be yours!

EVERYTHING FROM NANOLAB TO STARBUCKS

The campus covers 146 hectares – approximately 200 football fields – where you can find everything you need to learn, work and live.

From libraries and laboratories to fitness facilities and sports fields. You can play almost any sport imaginable here, such as baseball, beach volleyball, archery and even *muggle quidditch*.

[UTWENTE.NL/EN/CAMPUS](https://utwente.nl/en/campus)



TAKE A
VIRTUAL TOUR,
DOWNLOAD OUR
CAMPUS APP



UNIVERSITY FACTS & FIGURES



146

AREA IN HECTARES



7,122

BACHELOR'S STUDENTS



384

LAB FACILITIES



12,038

TOTAL STUDENTS



4,916

MASTER'S STUDENTS



40

SPORTS ASSOCIATIONS



3,713

STAFF



3,810

INTERNATIONAL STUDENTS



18

CULTURAL ASSOCIATIONS



3,000

STUDENT APARTMENTS



DID YOU KNOW THAT THE UNIVERSITY OF TWENTE...

- ✓ Is set on a beautiful campus, the only **PARK-LIKE CAMPUS** in the Netherlands?
- ✓ Is one of 14 Dutch research universities recognised and **FUNDED BY THE GOVERNMENT** of the Netherlands?
- ✓ Provides an internet connection of 1 gigabit per second and a **CAMPUS-WIDE WIFI NETWORK**?
- ✓ Lies in the east of the Netherlands, close to the German border, and is in the **HEART OF EUROPE**?
- ✓ Is **HOME TO MESA+ INSTITUTE**, one of the world's largest nanotechnology research institutes?
- ✓ Is the **MOST ENTREPRENEURIAL UNIVERSITY** in the Netherlands, for the fourth time (according to an independent ranking)?
- ✓ Is a founding member of the European consortium of **INNOVATIVE UNIVERSITIES** (www.eciu.org)?
- ✓ Has **STRONG TIES WITH UNIVERSITIES** in Germany, Brazil, Mexico, Australia, China, Indonesia, India, and other countries?
- ✓ Is the finish line of the biggest relay race in the world, the **'BATAVIERENRACE'**, which is followed annually by Europe's largest all-night student party?

2,122 EXCELLENT SCIENTISTS & 384 LAB FACILITIES ON CAMPUS

Though small in scale, UT is a world-renowned top research university and home to no fewer than 2,122 scientists and 384 lab facilities. Here's just a glimpse of our facilities, faculties, and research institutes – and the many cross-links that make us stand out as societal impactors.



UNIVERSITY OF TWENTE | DIGITAL SOCIETY INSTITUTE

[UTWENTE.NL/MAG/DIGITAL-SOCIETY](https://utwente.nl/mag/digital-society)

RESEARCH

MAP SLUMS MORE ACCURATELY

Make the use of AI in geo-spatial algorithms more responsible, fair, and transparent for society.



CAROLINE GEVAERT

GEO-INFORMATICS AND RESPONSIBLE
ARTIFICIAL INTELLIGENCE

FACULTY

GEO-INFORMATION SCIENCE AND EARTH OBSERVATION

RESEARCH

SOFTWARE RELIABILITY

Reliability and security of concurrent and distributed software.



MARIEKE HUISMAN

FORMAL METHODS AND TOOLS

RESEARCH

PHILOSOPHY OF TECHNOLOGY

The mediating role of technology in knowledge, ethics, and metaphysics.



PETER PAUL VERBEEK

PHILOSOPHY OF HUMAN TECHNOLOGY RELATIONS

FACULTY

BEHAVIOURAL, MANAGEMENT AND SOCIAL SCIENCES

GEOSCIENCE LABORATORY - UAVs

Improving the way drones navigate, communicate, and analyse their environment.

BMS LAB

High tech environment for innovative solutions to social challenges.

EXPERIMENTAL CENTRE FOR TECHNICAL MEDICINE

A simulated authentic professional environment in a high-tech and safe learning space.

UNIVERSITY OF TWENTE | TECHMED CENTRE

[UTWENTE.NL/MAG/TECHMED](https://utwente.nl/mag/techmed)

OUR PARTNERS

FRAUNHOFER PROJECT CENTER

The Fraunhofer Institute, a European leader in applied scientific research, has 69 centres worldwide. One of those is located on our campus. The goal of 'FPC@UT' is to bridge the gap between science and smart industry.

[UTWENTE.NL/FRAUNHOFER](https://utwente.nl/fraunhofer)

MAX PLANCK CENTER

The Max Planck Society is a leading name in research with a role in over 2,500 projects and 5,000 international partners in over 100 countries. We collaborate with two Max Planck Institutes in the field of complex fluid dynamics.

[UTWENTE.NL/MAX-PPLANCK-CENTER](https://utwente.nl/max-planck-center)



SARTHAK MISRA

SURGICAL ROBOTS

RESEARCH

SURGICAL ROBOTICS

Research on robotically guided, smart, and flexible surgical needles.

”

It is such a delightful time during spring and autumn in the Netherlands. I love the parks in the city, but also forests and beaches are easy to reach. Beautiful nature isn't the only thing the Netherlands has to offer: you can taste all kinds of international food in different restaurants or food halls, the public transport is very convenient and the people are friendly too! If you like to ride the bicycle, in Enschede you are absolutely at the right place! Enjoy your day by riding through the city, have a cup of coffee and enjoy tasting the iconic 'Hollandse Nieuwe' (tasty herring). Or start a chat with the hospitable locals. Trust me: you won't feel homesick!

**JING XU, CHINA****MASTER'S STUDENT IN EDUCATIONAL SCIENCE & TECHNOLOGY**

LIVING IN THE NETHERLANDS AND IN ENSCHEDE

The Netherlands is known for its capital city, Amsterdam, as much as for its bikes, water management, and tolerance. But what is it really like to study in this small country in Northwest Europe? And what secrets are there to discover in our university city, Enschede?

UNIVERSITY LIFE, DUTCH STYLE

As many international students will tell you, one of the great benefits of studying in the Netherlands is that it can help you develop an open mind and a more international perspective. We have many thousands of internationals studying and working here. The Dutch education system is interactive with an exceptional focus on teamwork and independent, proactive thinking.

INTERNATIONAL STUDENT ASSOCIATIONS

All Dutch universities have their own network of student-run associations that bring students together for academic activities, sports, and recreation. Three of the larger international associations are active at the University of Twente: AIESEC, AEGEE, and the Erasmus Student Network (ESN). UniTe is our own student platform for internationalisation and integration. These associations will assist you with everyday situations and help you settle in and make friends.

 [UTWENTE.NL/MAG/ASSOCIATIONS](https://utwente.nl/mag/associations)

MOST DUTCH PEOPLE SPEAK ENGLISH

The Netherlands is a small country and home to over seventeen million people. Many European capitals are within easy reach: Berlin and Brussels are four-and-a-half hours away by train and a short flight from Amsterdam will take you to London, Paris or Madrid. Most Dutch people speak or understand English. In fact, the Netherlands is ranked number 1 in the world when it comes to proficiency in English as a second language. Public transport is well-organised and safe. To travel the Dutch way, of course, get a bicycle (we actually have more bikes than people in the Netherlands). During our introduction days for international students, we can help you buy your very own bike.

”

YOU EASILY MEET WITH YOUR FRIENDS OUTSIDE UT; THE DISTANCES ARE SMALL AND EVERYONE HAS A BIKE!

LIDA VRACHATI, GREECE
MASTER'S STUDENT IN NANOTECHNOLOGY

ENSCHDE, A TYPICAL STUDENT CITY

The city of Enschede, located in the east of the Netherlands near the German border, has a population of around 159,000 – one-third of whom are students. The city boasts colourful weekly markets, bustling shopping streets, and well-tended parks – in fact, it is one of the greenest cities in the Netherlands. Its student population gives the city its flair. Every day, you will see students cycling to their classes, reading on the banks of Rutbeek Lake or having fun in the Old Market pubs. Enschede is home to three higher education institutions: The University of Twente, Saxion University of Applied Sciences, and the ArtEZ Institute of the Arts. However, the centre of student life is undoubtedly the University of Twente's unique campus.

CHECKLIST

When you decide to study abroad, you have lots to prepare. Start your preparations a year in advance for an untroubled stay in the Netherlands. This list gives you an insight into what to arrange and when:

- ✓ Find the right **MASTER'S** for you
- ✓ Check the **ADMISSION REQUIREMENTS**
- ✓ Find a **SCHOLARSHIP**
- ✓ Sort out **VISAS AND PERMITS**
- ✓ Get **INSURED**
- ✓ Arrange **ACCOMMODATION**
- ✓ **MAKE FRIENDS** at the Kick-In introduction week!
- ✓ **MAKE THE MOST OF YOUR TIME** in the Netherlands



WORK OUT!

UT AND SPORTS GO HAND IN HAND

Do you like team sports? Many sports associations here would love to have you on their team. More of an individual athlete? Check out our Fitness Centre, where you can train using high-quality equipment. There's a wealth of extra-curricular activities you can enjoy in your down-time. Whether it's simply to exercise, socialise, or learn something new in one of our courses, you will find plenty of opportunities here to challenge yourself, get involved, and stay fit during your studies.

40 SPORTS CLUBS

On our campus, students have engaged in an assortment of sports over the years. As a result, you can choose from almost 40 different sports clubs as well as great on-campus sports fields and facilities (more on that topic below), which you can use as a member of a sports club or as an individual athlete. From wall climbing to survival trails, from soccer to water polo – at UT, you'll find plenty to choose from!

COURSES AND GROUP LESSONS

It doesn't matter if it's your first time, or you're trying your hand at something new, we run countless courses designed to help you challenge yourself. Such as: swimming for absolute beginners, advanced Tai Chi and meditation. We also provide group lessons, a fun way to get active with friends. We offer, for example: Body balance, Pilates, Spinning, Zumba and Power Step.

TOP SPORTS FACILITIES

The UT campus hosts world-class sports facilities for almost all sports. In the Sports Centre right at the heart of our campus, we have two large sports halls and four gymnasiums, a complete Fitness Centre, and an indoor swimming pool. Outside the Sports Centre, you can make good use of the tennis courts, the outdoor swimming pool, the running track and urban trails, our versatile multisport fields, to name but a few options. All tired out? Have a refreshing drink in our sports bar and canteen.



YOUR GATEWAY TO FITNESS AND CULTURE

DO YOU LIKE TO WORK OUT REGULARLY, OR TO VISIT THE CINEMA OR THEATRE EVERY WEEK?

Then why not buy the UnionCard? You can get it for 50 euros a year (40 euros if you order before 15 October). The card offers all kinds of benefits, such as free swimming in Enschede, and free use of our music studios. It is also a good way of reaching out to fellow students!

su.utwente.nl/en



VLADI AVRAMOV, BULGARIA

BACHELOR'S STUDENT IN TECHNICAL COMPUTER SCIENCE

”

I've been playing sports for more than 13 years now and I've switched between sports a number of times. One thing I didn't imagine, though, is my passion for basketball that I found here at UT. It's not only about the game, but about the feeling of loosening up and relaxing with others after a day full of lectures and labs. Every week, my friends and I gather at the Sports Centre after study hours and usually we meet others who have come to do the same. We play whatever we feel like – street, classic or any other game we know. That's the thing about sports at UT – you just meet up with others and play, enjoy it and become friends – a community like no other.

DOUBLE YOUR KNOWLEDGE, NETWORK, AND POTENTIAL

ADDITIONAL OPTIONS FOR MASTER'S STUDENTS

Open yourself up to more life experiences and opportunities regarding future employment. In addition to our regular master's, we offer a variety of complementary options, such as joint degree programmes and student exchange possibilities.

JOINT, DOUBLE OR MULTIPLE

If you are interested in experiencing different cultures and academic approaches, consider our joint programmes which lead to a joint, double, or multiple degree. They offer you an integrated curriculum and are coordinated and offered jointly with reputable higher education institutes around the globe.

JOINT DEGREE

A joint degree is a single diploma awarded by at least two higher education institutions offering an integrated programme. It is awarded after successful completion of a joint programme and officially recognised in the countries in which the awarding institutions are located.

DOUBLE DEGREE

Unlike a joint degree, a double degree consists of two different diplomas and involves taking two different programmes, either at the same institution or at separate ones (sometimes in different countries). It is officially recognised in the countries in which the degree awarding institutions are located. Joint programmes can take more time than a standard master's, but usually take less time than two separate degree courses.

MULTIPLE DEGREE

A multiple degree consists of separate degrees awarded to students who successfully complete a joint programme offered by two or more higher education institutions.



A SELECTION OF OUR JOINT & DOUBLE DEGREE PROGRAMMES

OUR MASTER'S

Business Administration <

Business Information Technology <

Cartography <

Chemical Engineering <

Computer Science <

European Studies <

Erasmus+ Master's Geo-information Science and Earth Observation <
for Environmental Modelling and Management

Geographical Information Management & Applications <

Geo-information Science & Earth Observation <

Interaction Technology <

Mechanical Engineering <

Nanotechnology <

Water Technology <

OUR PARTNER UNIVERSITIES

> Lappeenranta University of Technology (Finland), Technische Universität Berlin (Germany), University of L'Aquila (Italy)

> Westfälische Wilhelms-Universität Münster (Germany)

> Technical University of Munich (Germany), Technische Universität Dresden (Germany), Vienna University of Technology (Austria)

> Erasmus Mundus double degree with Universidade Nova de Lisboa (Portugal), Universidad de Zaragoza (Spain), Institute of Chemical Technology Prague (Czech Republic), University Paul Sabatier (France), University Montpellier (France)

> Eötvös Loránd University (Hungary), University of Trento (Italy), EURECOM (France), University of Turku (Finland), University of Rennes 1 (France), Technical University Eindhoven (The Netherlands), Technical University of Berlin (Germany), KTH Royal Institute of Technology (Sweden), Technical University of Madrid (Spain), Aalto University (Finland), Université Côte d'Azur (France), Université Paris-Saclay (France)

> Westfälische Wilhelms-Universität Münster (Germany)

> University of Twente (the Netherlands), Lund University (Sweden), UCLouvain University (Belgium), University of Tartu (Estonia)

> Utrecht University, Delft University of Technology, Wageningen University & Research (NL)

> Chang'an University (China), Capital Normal University (China), K.N. Toosi University (Iran), Indian Institute for Remote Sensing (India), Lund University (Sweden)

> Aalto University (Finland), KTH Royal Institute of Technology (Sweden), Université Paris-Saclay (France), Technical University of Madrid (Spain), Technical University of Berlin (Germany), University of Trento (Italy)

> Instituto Tecnológica da Aeronáutica (Brazil)

> University of Lodz (Poland)

> Joint degree with Wageningen University & Research and University of Groningen (The Netherlands)



”

It is amazing how beautiful the campus is, with its many green areas, huge trees, and water elements. No matter the season, there is something new to admire. If all that is not enough for you, you will also become a member of an international community, with the opportunity to expand your social circle and get to know new people and cultures. All you have to do is be open-minded and willing to share your story. There is nothing better than exchange experiences while sharing new recipes.

MARGARITA BARLAMPA

MASTER'S STUDENT IN BUSINESS INFORMATION TECHNOLOGY



INTERNATIONAL TALENT? WE LOOK FORWARD TO SEEING YOU IN ENSCHEDE

Are you a student from outside the Netherlands and are you eager to grow as a global citizen? At UT, you will benefit from international collaboration and strategic partnerships that help us to bring the world to our campus, and vice versa.

EXCHANGES AND INTERSHIPS

From here, you can access our many top-notch, international partner universities, as well as companies and governmental organisations around the world. Depending on your programme, you can make use of exchange and internship opportunities in most European countries and many non-EU destinations, such as Australia, Brazil, China, Hong Kong, Indonesia, Japan, Mexico, Russia, and South Korea. Some of these countries are home to our International Strategic Partners: University of Münster (Germany), University of Science and Technology (China), University of São Paulo (Brazil) and University of Waterloo (Canada). You can also tap into our network of leading organisations and international companies, such as ASML, Boeing, Google, Microsoft, Unilever, AkzoNobel, Shell, Siemens, BP, and Philips.

ECIU UNIVERSITY

You will also have easy access to the education and research facilities of our network of entrepreneurial and innovative partner universities across Europe, thanks to our role as founding member of the European Consortium of Innovative Universities (ECIU). ECIU has founded the ECIU University, which is the first European university where learners, teachers and researchers cooperate with cities and businesses to solve real-life challenges.

EXCHANGE STUDY PACKAGES

If you would like to join us as an exchange student, make sure your home university has an exchange agreement with us before applying. Our Exchange Study Packages are a set of balanced, coherent, well-structured, and comprehensive courses at academic level, taken in the final year of a bachelor's. Simply apply for a package that suits your academic background and interest to be assured of a well-balanced exchange programme of 30 credits (EC). Most packages are accessible to students who have successfully completed the first two years of their bachelor's. Another option may be to do an internship or research assignment with us.

 [UTWENTE.NL/MAG/EXCHANGE](https://utwente.nl/mag/exchange)

A FEW INTERNATIONAL PARTNER UNIVERSITIES YOU MAY WANT TO ATTEND

- ✓ Stanford University (THE 2)
- ✓ Tsinghua University (THE 20)
- ✓ University of Edinburgh (THE 30)
- ✓ University of Melbourne (THE 31)
- ✓ TU Munich (THE 41)
- ✓ KU Leuven (THE 45)
- ✓ University of Tokyo (THE 36)
- ✓ Seoul National University (THE 60)
- ✓ University of Science and Technology of China (THE 87)
- ✓ Lund University (THE 103)
- ✓ City University of Hong Kong (THE 126)
- ✓ WWU Munster (THE 195)
- ✓ University of São Paulo (THE 201-250)

 [UTWENTE.NL/PARTNERSHIPS](https://utwente.nl/partnerships)

”

Career Services is always there to help you choose the direction you want to go in. During your studies, there is always a point when you need to make that kind of decision. Whether you need to choose which elective modules to take or which programme to follow, Career Services can guide you through. After a few talks and a number of tests, it became clear to me in which direction I wanted to go. It didn't just give me an idea of what I was interested in, but it also showed me the areas that I did not like and wouldn't want to move into. Based on the talks with Career Services, I was able to feel confident and happy about my choice.

ROELAND HEERES, THE NETHERLANDS

MASTER'S STUDENT IN MECHANICAL ENGINEERING

THE RIGHT ADVISER FOR YOU

We'll make sure you find the right person to get answers. You can benefit from our large, expert network of study and student associations, student organisations, faculties and alumni. We will gladly connect you with the right people, inside or outside UT – people who can help you as you map out your future.



WHAT WILL YOUR FUTURE LOOK LIKE?

Many of the small choices you make as a student can influence your future after finishing your degree. For example, the subject you choose for your graduation assignment, or whether or not you study abroad. Our Career Services team is here to help you think about your future – so that your career gets off to a flying start as soon as you get your diploma!

THE CAREER SERVICES TOOLKIT

CAREER ADVICE

DO YOU HAVE QUESTIONS OR DOUBTS ABOUT YOUR CAREER?

You can benefit from our large, expert network of study and student associations, student organisations, faculties and alumni. We will gladly connect you with the right people, inside or outside UT – people who can help you as you map out your future.

STUDY COMPASS

ARE YOU THINKING ABOUT STOPPING, OR SWITCHING PROGRAMMES?

Do you have to change direction because of a negative recommendation on continuation of studies after your first year? Or are you struggling to decide on a master's? Our team can become your personal compass. Through the interviews, tests and exercises we offer, you will quickly discover your interests and capacities. Together with our advisers, you can then discuss your results: hands-on and personal.

USEFUL WORKSHOPS

TAKE PART IN USEFUL WORKSHOPS TO DEVELOP YOUR JOB APPLICATION SKILLS:

- ✓ Personal branding
- ✓ LinkedIn tips & tricks
- ✓ Writing your CV
- ✓ Interview skills
- ✓ Salary negotiation

WHEN YOU NEED A HELPING HAND

Sometimes you need a little bit of help. A nudge to help you successfully complete your studies. If you have personal circumstances or are experiencing personal problems that are affecting your studies or your well-being, feel free to talk to our advisers and counsellors.

YOUR STUDY ADVISER

When you start studying at UT, your first point of contact will be your study adviser. He or she will monitor your progress and help you deal with academic and study-related issues, such as study choices, planning and task completion.

STUDENT AFFAIRS, COACHING AND COUNSELLING

Are personal circumstances, such as illness or disability, hindering you in your studies? Student Affairs, Coaching and Counselling (SACC) can help you find a suitable form of support. For example, in the case of depression, homesickness, problems with parents, relationships or fellow students, or doubts about your study choice, you can see our student psychologists free of charge. You can also contact SACC with questions about your rights and obligations, student finance and financial support, coaching, and study facilities.

[UTWENTE.NL/MAG/M-SACC](https://utwente.nl/mag/m-sacc)

PERSONAL DEVELOPMENT

Are you suffering from stress, procrastination or exam anxiety? Are you reaching your limit? Why not take mindfulness or self-management training? It will help you grow!

ARRANGING INSURANCE

International students studying in the Netherlands are required by law to have health and liability insurance. We can help you arrange an insurance package covering most health and liability costs with a Dutch insurance company if you are eligible for this.

[UTWENTE.NL/MAG/INSURANCE](https://utwente.nl/mag/insurance)





AFTER YOUR MASTER'S CHOOSE YOUR DESTINATION

What's next after you've completed your master's at the University of Twente?
Have you already made up your mind or are you still figuring it out?
Here are four options:

01 GET A JOB IN INDUSTRY OR GOVERNMENT

Our Career Services team will be happy to support you. Contact them at utwente.nl/careerservices. Looking locally? Twente is an entrepreneurial region rich in knowledge and tech. Discover its top companies and find the perfect job by subscribing to the career portal at twente.com. Or visit the annual Business Days Twente and find a match with representatives of about 125 companies.

02 START A BUSINESS WITH INCUBASE

With Incubase, the University of Twente, the Student Union and Novel-T partner up to offer innovative students the best place to build their startup. Excited? Check incubase.nl.

MORE THAN 1,000 START-UPS

As the most entrepreneurial university in the Netherlands, we have gained a good reputation for facilitating start-ups. This has resulted in more than 1,000 start-ups, such as Booking.com, Scisports, Fokker Aerostructures, Robird/Clear Flight Solutions, Demcon, Ramani, Lionix International, Hy2care, and Athom.





03 PURSUE A PHD DEGREE

- ✓ Apply for a regular PhD position via our website at utwente.nl/vacancies
- ✓ Arrange your own funding or get a scholarship. Make sure you contact the head of the research group you would like to join: only after one of our full professors has shown willingness to become your supervisor the department will register you as a guest researcher and arrange for your arrival.
- ✓ Send in an open application and you will be contacted as soon as a vacancy becomes available that we think might suit you.

🔗 [UTWENTE.NL/MAG/PHD](https://utwente.nl/mag/phd)

TWENTE GRADUATE SCHOOL

Twente Graduate School (TGS) coordinates high-quality educational programmes based on topics closely related to the work of the university's research institutes, taught and supervised by expert researchers and designers. TGS offers PhD and PDEng programmes for graduate students who are keen to pursue a career as a scientific researcher or technological designer.

🔗 [UTWENTE.NL/TGS](https://utwente.nl/tgs)

04 PURSUE A PDENG DEGREE

- ✓ Apply for a regular PDEng position via our vacancy website.
- ✓ Send in an open application and we will contact you as soon as a suitable vacancy becomes available.

All our PDEng programmes depend on agreements with external partners.

🔗 [UTWENTE.NL/MAG/PDENG](https://utwente.nl/mag/pdeng)

PDEng and PhD selection is based on prior MSc results, a talent for design, and motivation. If you apply before completing your MSc programme, you may be granted conditional acceptance on the basis of your transcripts, curriculum, relevant research and expected graduation date.

OUR GRADUATES

The University of Twente has over 54,000 alumni across the world. When you finish your studies at UT, you will be in illustrious company. Across the board, UT graduates possess a wealth of theoretical knowledge alongside strong practical know-how, perfect for a 21st-century professional. It's clear: our graduates have gone on to make a real impact in the world, no matter the degree programme taken. Here, you can meet a handful of our graduates and see just how far they've gone.

54,000 ALUMNI

Our alumni have valuable work experience and are an important source of inspiration for both students and recently graduated alumni.



COMBINING TECHNOLOGY WITH EDUCATION

EDUCATIONAL ADVISER AT TU/E



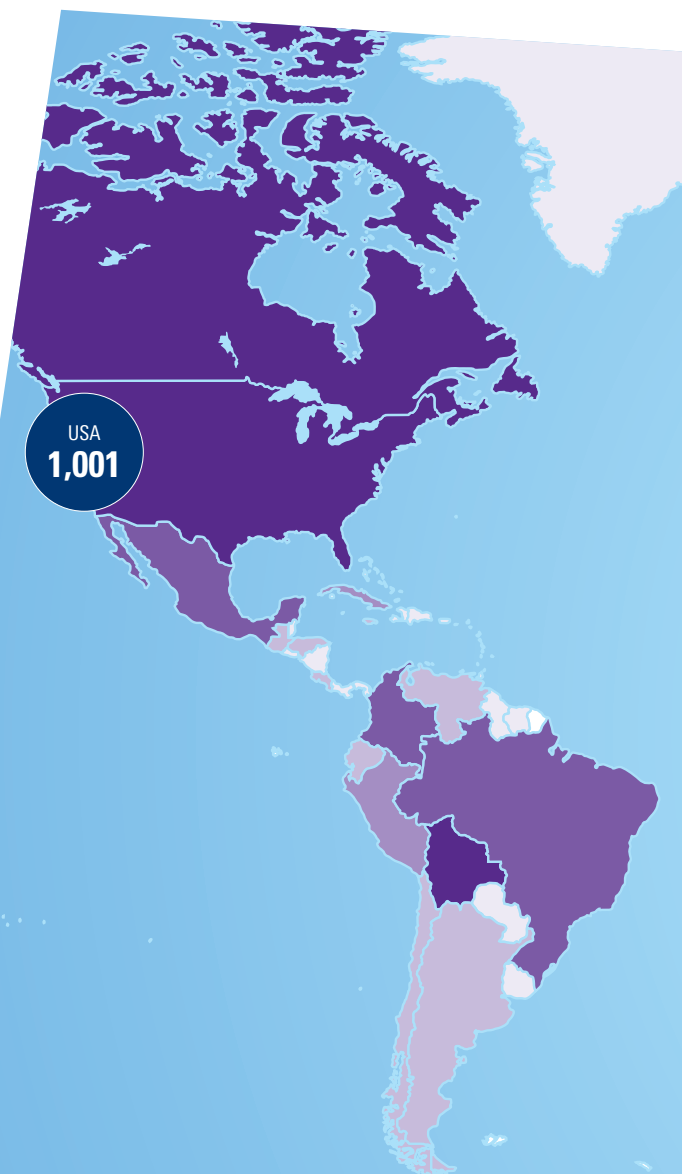
'In Mexico I finished a Bachelor in Computer Systems Engineering. I realised that I wanted to improve the use of technology in schools. After graduation, I moved to the Netherlands for the Master's in Educational Science & Technology which gave me the opportunity to use my technical background in a new, non-technical, environment.

The main challenge in this programme is the complexity of social science. There are no laws (like in Physics), you deal with people. You experience the complexity of personalities, different cultures, variation in schools, etc. All in all, you want to create a better system that works for schools, their pupils and teachers. You learn a way of thinking and implementing basic concepts and theories. Because of the influence of technology and complexity in our daily lives, the concepts and theories needs adjusting continuously.

Today I am an Educational Adviser, working with people and the innovations within education and their technologies. I found my dream job.'

DAIAN SAMAN, MEXICO

ALUMNA MSC IN EDUCATIONAL SCIENCE & TECHNOLOGY



DEVELOPING COMBUSTION TECHNOLOGY FOR BIO-GAS

PRINCIPAL COMBUSTION ENGINEER AT OPRA TURBINES

'Mechanical Engineering graduates find jobs in many sectors. I graduated in 2013 and now work as a Combustion Engineer at OPRA Turbines, a company that builds large gas turbines – and supplied energy to the 2014 Winter Olympics. My job is to make sure it is technically feasible for us to burn our clients' fuel. My responsibilities include technical support for the sales department, making CFD models (simulating currents with the help of a computer), and testing fuels in our combustion lab or in a gas turbine. My ambition is to contribute to exciting, innovative technology. I'm constantly using at work what I learned during my studies. All the theory keeps coming back, yet the practical skills integral to UT's approach are even more important, such as problem-solving and project-based work. Mechanical Engineering at UT gives you an excellent foundation. When you graduate you are fully qualified and equipped for the job market.'

THIJS BOUTEN, THE NETHERLANDS

ALUMNUS BSC & MSC IN MECHANICAL ENGINEERING

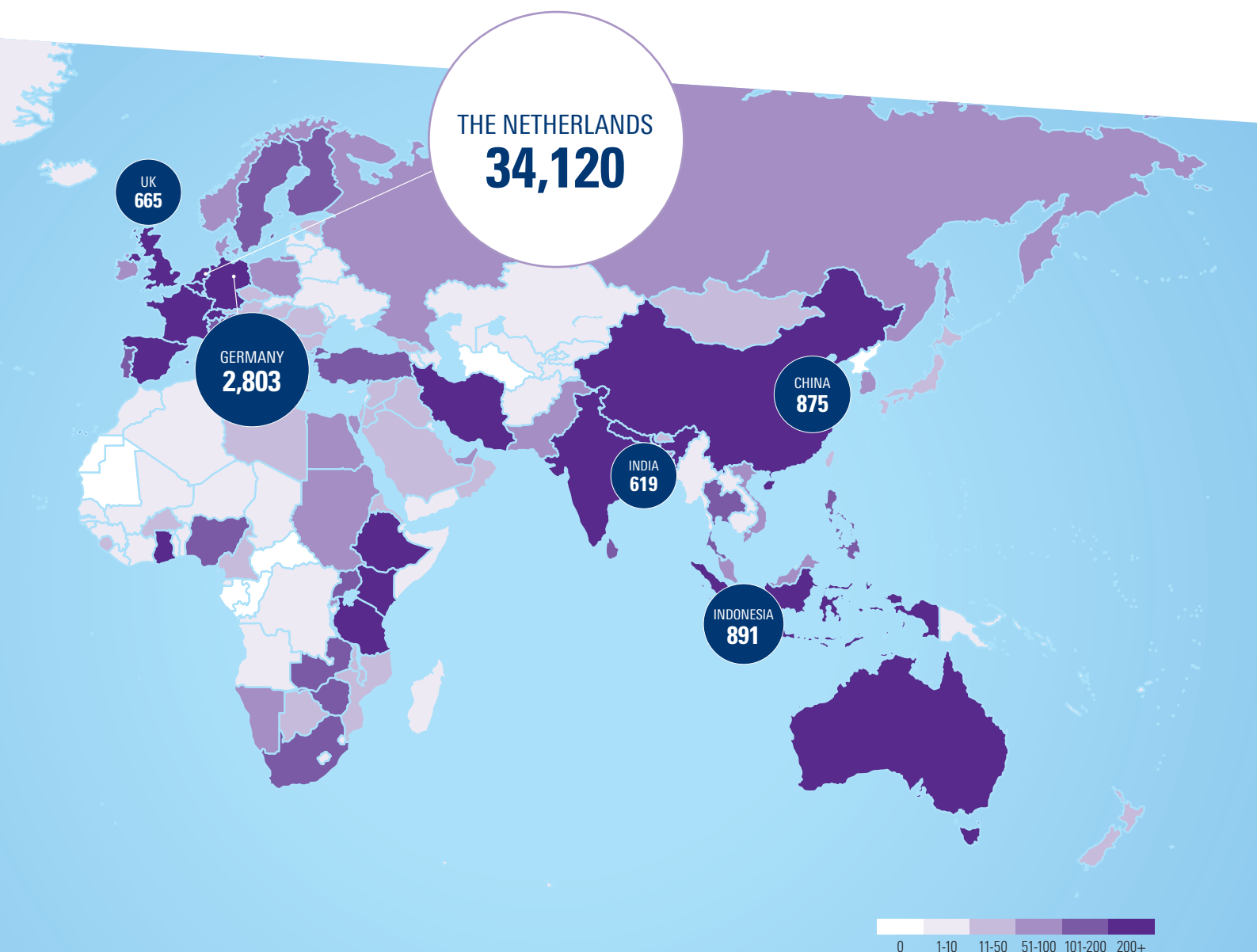
STOPPING CYBERCRIMINALS IN THEIR TRACKS

DIGITAL EXPERT AT LANDELIJKE EENHEID (NETHERLANDS' POLICE AGENCY) HIGH TECH CRIME UNIT

'In my last year of Technical Computer Science at the University of Twente, I did a minor in Law. For my final project at the Dutch National Police, I worked on the infringement of intellectual property. I did a case file study and found out what criminals undertake, what goals they have, and how we could put it in a model to find ways to prevent the criminals from accomplishing their goals. I enjoyed the project a lot, as it brought together a lot of technical details, social communication, and Dutch law. I completed my Master's in Computer Science in 2014 and joined the High Tech Crime team at the National Police. It is fascinating to work in this team, as we are always working on new techniques. Cybercriminals keep innovating, so we have to innovate as well.'

JARMO VAN LENTHE, THE NETHERLANDS

ALUMNUS BSC & MSC (TECHNICAL) COMPUTER SCIENCE





GET READY. GET SET. APPLY!

OUR APPLICATION PROCEDURE

Your application starts by filling in our online application form. Keep the application deadline in mind. If you are an international student intending to apply for a scholarship programme, we advise you to start your scholarship application as soon as possible.

[UTWENTE.NL/MAG/APPLICATION-DEADLINES](https://utwente.nl/mag/application-deadlines)

NOTICE OF ADMISSION

When we have received your complete application package, one of our Educational Admission Committees will evaluate it. You will be informed of the outcome as soon as possible (within four weeks). You will receive confirmation of your admission by email.

BEFORE YOU START, MAKE SURE YOU HAVE THE FOLLOWING DOCUMENTS:

- ✓ Your bachelor's degree certificate or equivalent (if available at time of application)
- ✓ Certified translation of your bachelor's degree if it is not in Dutch, English or German
- ✓ (Preliminary) transcript of records (in Dutch, English or German)
- ✓ Valid passport, clearly indicating your city of birth
- ✓ Result of English language tests
- ✓ Abstract of your final bachelor's project (thesis)
- ✓ Resume
- ✓ Letter of application/motivation letter stating your reasons for wanting to join the programme
- ✓ Additional Higher Degree certificate and transcript
- ✓ Course descriptions (if required)
- ✓ GMAT certificate (only for Business Administration applicants)
- ✓ GRE or GMAT certificate (only for Industrial Engineering & Management)

ADMISSION

REQUIREMENTS FOR INTERNATIONAL STUDENTS

THESE ARE THE GENERAL REQUIREMENTS FOR ADMISSION TO OUR MASTER'S:

1. A relevant bachelor's degree (or equivalent qualification) from a university or other accredited academic institution
2. Sufficient command of English (no other test will be accepted):
 - a) Academic IELTS, overall score of at least 6.5 on each separate test, overall band score of at least 6.5. Certificates no older than 2 years
 - b) TOEFL iBT (internet-based), overall score of at least 90. Certificates no older than 2 year
 - c) Cambridge C1 Advanced (before: CAE), obtained with an A, B, or C grade
 - d) Cambridge C2 Proficiency (before: CPE), obtained with an A, B, or C grade
3. Additional requirements (certificates no older than 2 years):
 - a) GMAT certificate, score 600 (only for Business Administration applicants)
 - b) GRE or GMAT certificate (only for Industrial Engineering & Management)

YOU ARE EXEMPT FROM THE ENGLISH LANGUAGE REQUIREMENTS IF:

- » You are a native English speaker from Australia, Canada (English-speaking part), Ireland, New Zealand, the United Kingdom, or the United States of America
- » You have a relevant bachelor's degree from an accredited academic institution in the Netherlands
- » You have obtained a three-year bachelor's degree in Australia, Canada, Ireland, New Zealand, the United Kingdom, or the United States of America

To check the latest language requirements please visit utwente.nl/language-requirements

TRANSFERRING TO A MASTER'S AT UT

If you have completed – or are about to complete – a bachelor's at a Dutch university of applied sciences (HBO) or a research university, you can apply for a

master's. Your bachelor's degree will not always directly qualify you for admission to the master's of your choice: you may have to take a tailored pre-master's, which you have to complete successfully in order to proceed. You can enrol in the pre-master's after or during your bachelor's.

[UTWENTE.NL/MAG/PRE-MASTER](https://utwente.nl/mag/pre-master)

APPLICATION PROCESS AND ELIGIBILITY CHECK

In order to apply for most of our programmes, you will need to use the Dutch university online application system studielink.nl. However, the starting point for your application should be the UT website, via an eligibility check.

[UTWENTE.NL/MAG/APPLY-INTERNATIONAL](https://utwente.nl/mag/apply-international)

Please note, the Master's in Geo-Information Science & Earth Observation has different admission requirements.

For additional, programme-specific requirements, please check the programme page of your interest on our website. You can also do an eligibility check there. You can apply for admission to a master's at UT before completing your bachelor's. You may be granted conditional acceptance based on your transcripts, detailed curriculum information, relevant research, and expected graduation date. However, before you can start your master's, we will require proof that you have obtained your bachelor's degree.

ADDITIONAL REQUIREMENT FOR CHINESE NATIONALS

Nationals of the People's Republic of China need to obtain a NUFFIC certificate as validation of their qualifications, in addition to their English language test score documents. The University of Twente requires your NUFFIC certificate (formally known as NESO certificate) for your visa application.

[STUDYINHOLLAND.NL](https://studyinholland.nl)

DEADLINES

		START SEPTEMBER 2022	START FEBRUARY 2023
Non-visa students	1. Submit a complete application (online via Studielink & Osiris) before:	1 July 2022	1 December 2022
	2. Submit offer of admission before:	1 August 2022	1 January 2022
	3. Payment deadline:	31 August 2022	31 January 2023
Visa students*	1. Submit a complete application (online via Studielink & Osiris) before:	1 May 2022	1 October 2022
	2. Submit offer of admission before:	1 June 2022	1 November 2022
	3. Payment deadline:	30 June 2022	30 November 2022

* Students changing the purpose of their stay also need to comply with these deadlines

PLEASE NOTE: Geo-Information Science & Earth Observation and the programme Geographical Information Management & Applications have alternative deadlines. Please check our website for more information.

WHAT ABOUT THE MONEY?

As a student in the Netherlands, you will have various costs to cover, such as tuition fees, housing, insurance, and day-to-day expenses. Here is a brief overview of what to expect.

TUITION FEES

If you are a national of an EU/EEA country, you will probably have to pay the so-called 'statutory tuition fee'. This fee is determined and subsidised by the Dutch government. Dutch universities do not receive government funding for non-EU students. This is why we set different rates for students from outside the EU/EEA. Please note that some of our master's have different fee structures.

HOW ABOUT A PART-TIME JOB?

As an international student in the Netherlands, you may want to take a part-time job to cover expenses, help you assimilate into Dutch society, and gain some work experience. Career Services can provide you with information on the departments and organisations, inside and outside of UT that can assist you when looking for job opportunities while studying.

[UTWENTE.NL/CAREERSERVICES](https://utwente.nl/careerservices)

SCHOLARSHIPS

UT offers various, mostly merit-based, scholarship programmes to international students. Each scholarship programme has its own set of conditions and requirements. Make sure your scholarship application is completed before the scholarship application deadline, which is usually before the application deadline of the programmes. Check the UT Scholarship Finder for more details.

[UTWENTE.NL/SCHOLARSHIPS](https://utwente.nl/scholarships)



TUITION FEES PER YEAR FOR REGULAR PROGRAMMES

PROGRAMME	STATUTORY	INSTITUTIONAL
Bèta	€ 2,209	€ 16,500
Alpha-Gamma	€ 2,209	€ 12,750

These are the tuition fees for the entire academic year (when you start in September).

PLEASE NOTE: These were the tuition fees for the academic year 2022/2023, at the time of printing this brochure. As well as being adjusted annually, the fees may differ due to changes in university policy. To view the latest information regarding tuition fees visit utwente.nl/tuitionfees.

EU/EEA countries: Austria, Belgium, Bulgaria, Cyprus, Croatia, Czech Republic, Denmark, Estonia, France, Finland, Germany, Greece, Hungary, Iceland, Ireland, Italy, Latvia, Liechtenstein, Lithuania, Luxembourg, Malta, the Netherlands, Norway, Poland, Portugal Romania, Slovakia, Slovenia, Spain, and Sweden. Students from Switzerland and Surinam (only regarding tuition fees) are also in this category.

COST OF LIVING

Before coming to study at UT, you must also consider the cost of living in the Netherlands. Count on a total cost of living of around **€10,575** to **€12,000** per year (excluding tuition fees). Here is a rough indication of your annual expenses:

Housing	€5,500
Books & supplies	€600
Bank account	€50
Food	€2,500
Transportation	€800
Other (clothing etc.)	€1000
Bicycle (single purchase)	€125
Insurance	€650
(optional for EU/EEA students)	
Entry visa/residence permit	€192
(Non-EU/EEA students only)	
Total annual costs	€11,417
EU/EEA students	€10,575

Please note that some programmes may require additional costs for study materials, such as a laptop.

CONGRATS, YOU'RE IN! NOW WHAT?





AFTER ADMISSION

Once you have been admitted to a master's or pre-master's, you will receive an Offer of Admission. As soon as you accept this offer, your application will be processed further and several of our services will start to work to help ensure that you have a smooth arrival and stay at the University of Twente.

ENTRY VISA AND RESIDENCE PERMIT

The University of Twente assists all students requiring an (entry) visa, residence permit and/or Change of Purpose. If you require an entry visa or residence permit, you will receive an email after your admission, outlining all necessary procedures, after accepting the Offer of Admission. Keep in mind that, by Dutch law, students cannot apply for a visa themselves.

 [UTWENTE.NL/MAG/VISA](https://utwente.nl/mag/visa)

INSURANCE

International students studying in the Netherlands are required by law to have health and liability insurance. If you are insured under the national health insurance scheme of an EU/EEA member state or Switzerland, your insurance company can provide you with a European Health Insurance Card (EHIC). If you have questions regarding health and liability insurance, UT can provide information.

 [UTWENTE.NL/MAG/INSURANCE](https://utwente.nl/mag/insurance)

JOIN THE KICK-IN INTRODUCTION DAYS

The University of Twente organises an introduction week for new students before every autumn and spring semester. Called Kick-In, the event gives you the opportunity to meet your fellow students and get to know Enschede and the university's campus. We can also help you sort out official arrangements during the Facility Market, such as your university registration and the first steps towards registration with the municipality of Enschede. If you have received an Admission Letter from the university, you will be personally invited to attend the Facility Market for international (visa) students during the Kick-In.

BOOK OUR PICK-UP SERVICE

When you arrive at Amsterdam Schiphol Airport, you can make use of the UT's airport pick-up service. Information about the pick-up service can be found on the Kick-In website.

 [KICK-IN.NL/EN](https://kick-in.nl/en)  [UTWENTE.NL/PICKUP](https://utwente.nl/pickup)  [SU.UTWENTE.NL/PICKUP](https://su.utwente.nl/pickup)

LEARN DUTCH

The Dutch are known for their good conversational skills in English, but you may find it useful and fun to learn some Dutch yourself.

 [UTWENTE.NL/MAG/PREPARE](https://utwente.nl/mag/prepare)

FIND ACCOMMODATION

The University of Twente offers a mediation service for students to find accommodation on- and off-campus. We always take your personal preferences and needs into account.

GUARANTEED HOUSING OFFER FOR NON-EU

You can register on our online housing platform **Roomspot** to respond to housing offers. Visa students who apply for accommodation, are guaranteed to receive an offer. Accommodation can be found in the city of Enschede, the city of Hengelo or on the university campus. If you accept an offer, you will sign a rental agreement with one of the local housing providers and will be subject to their rules, policies, and processes. The maximum rent period is one year. After this, you will have to move out of your rented accommodation. It is not possible to renew or extend your rental contract after this year. After the first year, students often find a place to live in the cities of Enschede or Hengelo, together.

[ROOMSPOT.NL/EN](https://roomspot.nl/en)

LIVING WITH OTHERS

Through **Roomspot**, you may have to take part in a resident selection procedure, when applying to live somewhere. Students live together and share communal areas such as the living room, kitchen and bathroom, but each student has their own private bedroom. Many students eat and cook together, play games in the evenings, go clubbing, or do other things as a group. In short: they spend a lot, maybe even the major part of their free time, together. A good fit is thus important and therefore students often select their own flatmates. The selection procedure, known as cooptation (Dutch: coöptatie), aims to ensure a good fit. This process is not organised by UT, but by the flat inhabitants themselves. In most cases, flats will invite you (or even a couple of students interested in a room at once) for a meeting in order to get to know you. After that, they decide as a group who they would like to offer the room to and will let you know whether you can move in or not. Don't be afraid to reject the room yourself if you cannot picture yourself living in a particular flat and don't feel down if a flat rejects you. Most students visit several flats before they find what they are looking for. If it's not possible for you to visit the flat beforehand, you can always ask the flat for a meeting via VoIP/Skype/video chat.

COSTS

The rent for accommodation varies from approximately €300 to €800 per month and there are multiple options both on and off campus.

SPECIFIC CIRCUMSTANCES

If you have any further questions about accommodation in your specific circumstances, there are plenty of options to help you find the answers. Make sure you check the UT website for additional information and FAQs or get in touch with UT Housing.

[UTWENTE.NL/MAG/M-HOUSING](https://utwente.nl/mag/m-housing)

TIPS & TRICKS

SOONER RATHER THAN LATER

Create an account on **Roomspot.nl/en** and start your search. To help you get the accommodation most suitable to you, we recommend that you apply as soon as possible. As Roomspot's distribution of rooms is established on a 'first come, first serve' basis, getting your application in early is advisable. You do need to be admitted first to get a room via **Roomspot.nl/en**.

LIVING WITH YOUR PET

Each housing provider has different rules and regulations that could affect your stay: for example, if you want your pet to stay with you, this is allowed at De Veste but prohibited at ITC and Stadsweide. So make sure you do your research, set up an account, and get your application in early.

BEFORE MOVING IN

All the information you need before moving in – such as where to pick up your keys – can be found with your booking confirmation. If you're staying on campus, make sure you meet the payment criteria for housing mentioned in your booking.

CANCEL YOUR HOUSE

If you need to cancel your booking before arrival, conditions will depend on your specific rental agency. Make sure you get in contact with them for more information.

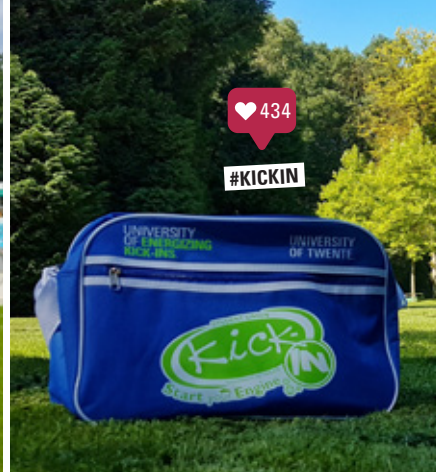
”

Personally, I find life on campus to be great. I live in a house with thirteen housemates, including Dutch students, which gives me the opportunity to practice the Dutch language every day. We have a cooking and a cleaning roster, to ensure there is food on the table every evening and that the house stays decent and orderly during the week. We also have evenings during which we visit everyone's rooms and each person serves a drink and shares a story. Needless to say, those evenings are pretty fun. Housing on campus also offers you a lot of freedom in decorating your room. On top of that, you're super close to all the facilities that the campus offers, like the gym, the music studios, the supermarket, the DesignLab and, of course, the lecture halls. There's also a lot of nature on campus; it looks amazing here when the sun shines.

RADHIKA KAPOOR, INDIA**MASTER'S STUDENT IN INTERACTION TECHNOLOGY**



#SWIMMINGTIME



#KICKIN



#BATAVIERENRACE



#ONLINEOPENDAY



#HOLIFESTIVAL



#ROYALVISIT

FOLLOW US ON SOCIAL MEDIA!



@UTWENTE



@UTWENTE



@UTWENTEN



@UNIVERSITYOFTWENTE



#CAMPUSLIFE



#WINTERONCAMPUS

OUR MASTER'S

AND MUCH MORE...

At the University of Twente, we offer 20 bachelor's and over 30 master's degrees. Most of our master's are English-taught.

ACCREDITATION

Almost all of our programmes lead to the title Master of Science and each one is accredited by the Accreditation Organisation of the Netherlands and Flanders (NVAO). The NVAO was established by the Dutch and Flemish governments as an independent accreditation organisation tasked with providing an expert and objective assessment of the quality of higher education in Flanders and the Netherlands.

Our Master's in European Studies and Public Administration received an additional accreditation by EAPAA, the European Association for Public Administration Accreditation. The EAPAA was founded to develop and maintain a system for the voluntary accreditation of academic public administration programmes in Europe. International recognition by peers is an important assurance for the quality of a degree programme.

4TU.

Programmes that include the '4TU' logo offer you the option of taking courses at any of the four leading technology universities in the Netherlands belonging to the so-called 4TU.Federation: Delft University of Technology, Eindhoven University of Technology, Wageningen University & Research, and the University of Twente.

- > APPLIED MATHEMATICS
- > APPLIED PHYSICS
- > BIOMEDICAL ENGINEERING
- > BUSINESS ADMINISTRATION
- > BUSINESS INFORMATION TECHNOLOGY
- > CHEMICAL SCIENCE & ENGINEERING
- > CIVIL ENGINEERING & MANAGEMENT
- > COMMUNICATION SCIENCE
- > COMPUTER SCIENCE
- > CONSTRUCTION MANAGEMENT & ENGINEERING
- > EDUCATIONAL SCIENCE & TECHNOLOGY
- > ELECTRICAL ENGINEERING
- > EMBEDDED SYSTEMS
- > ENVIRONMENTAL & ENERGY MANAGEMENT
- > EUROPEAN STUDIES
- > GEO-INFORMATION SCIENCE & EARTH OBSERVATION
- > GEOGRAPHICAL INFORMATION MANAGEMENT & APPLICATIONS
- > HEALTH SCIENCES
- > INDUSTRIAL DESIGN ENGINEERING
- > INDUSTRIAL ENGINEERING & MANAGEMENT
- > INTERACTION TECHNOLOGY
- > MECHANICAL ENGINEERING
- > NANOTECHNOLOGY
- > PHILOSOPHY OF SCIENCE, TECHNOLOGY & SOCIETY
- > PSYCHOLOGY
- > PUBLIC ADMINISTRATION
- > ROBOTICS
- > SCIENCE EDUCATION & COMMUNICATION
- > SPATIAL ENGINEERING
- > SUSTAINABLE ENERGY TECHNOLOGY
- > SYSTEMS & CONTROL
- > WATER TECHNOLOGY
- > TECHNICAL MEDICINE



APPLIED MATHEMATICS

Can you predict when something goes viral? How do you model 5G?

What happens in your brain when an epileptic seizure occurs? These questions all have one thing in common: mathematics is the way to come up with answers.

In this master's, you will apply mathematics to challenging issues in the most diverse sectors, from technology to healthcare. You will learn how to discover new patterns and how to predict them through mathematical models. Your choice of specialisation and research group determines which courses you will be taking and the type of research you will be doing during your master's assignment. In addition to the theoretical courses in the first year, you will do an internship or project at a company or organisation outside the University of Twente. Think, for example, of a financial organisation, a traffic advice agency, a hospital or major carrier company, such as KLM or NS. With employers in the technical, financial, medical and social sectors increasingly seeking mathematicians who can come up with practical applications, you will be important to society as well as hugely in demand regarding the job market after you graduate.

 [UTWENTE.NL/MAG/M-AM](https://utwente.nl/mag/m-am)

FACTS

DEGREE	MASTER OF SCIENCE
MODE OF STUDY	FULL-TIME
CREDITS	120 EC
PROGRAMME DURATION	2 YEARS
STARTS	SEPTEMBER OR FEBRUARY
LANGUAGE	ENGLISH
SPECIALISATIONS	<ul style="list-style-type: none"> ✓ MATHEMATICAL SYSTEMS THEORY, APPLIED ANALYSIS AND COMPUTATIONAL SCIENCE ✓ OPERATIONS RESEARCH ✓ MATHEMATICS OF DATA SCIENCE ✓ ARTIFICIAL INTELLIGENCE FOR HEALTH
GRADUATE JOBS	<ul style="list-style-type: none"> • RESEARCHER (PHD, R&D) • RISK MANAGER • QUANTITATIVE ANALYST • TEACHER • DATA SCIENTIST

APPLIED PHYSICS

Applied Physics is all about understanding the fundamental laws of the physical world and finding ways to apply those laws through technical solutions. Applied physicists use scientific principles to create or improve practical devices and systems and to contribute in many other fields. The physics department at the University of Twente is one of the best in the world.

During our Master's in Applied Physics, you will learn more about the fundamentals of modern physics and their application. This programme will expand your knowledge of physics as a whole, while giving you the opportunity to deepen your knowledge in a specialisation of your choice. At the University of Twente, we focus on science and engineering in areas such as Physics of Fluids, Nanoelectronic Materials, Applied Nanophotonics, Soft Matter, and Energy Materials & Systems. You can tailor your programme to suit your individual interests and ambitions. For a complete overview of our focus areas and the corresponding courses, please visit our website.

 [UTWENTE.NL/MAG/AP](https://utwente.nl/mag/ap)

FACTS

DEGREE	MASTER OF SCIENCE
MODE OF STUDY	FULL-TIME
CREDITS	120 EC
PROGRAMME DURATION	2 YEARS
STARTS	SEPTEMBER OR FEBRUARY
LANGUAGE	ENGLISH
SPECIALISATIONS	<ul style="list-style-type: none"> ✓ PHYSICS OF FLUIDS ✓ NANO-ELECTRONIC MATERIALS ✓ APPLIED NANOPHOTONICS ✓ SOFT MATTER ✓ ENERGY MATERIALS & SYSTEMS
GRADUATE JOBS	<ul style="list-style-type: none"> • RESEARCHER AT A UNIVERSITY OR R&D DEPARTMENT • PRODUCT ENGINEER AT A TECH COMPANY • DATA ANALYST AT A BANK

BIOMEDICAL ENGINEERING

Are you excited about developing new technologies for healthcare? Are you interested in rehabilitation robots, artificial organs, medical imaging and prosthetics? Then our Master's in Biomedical Engineering is the right choice for you.

This engineering programme will enable you to research, design and develop innovative products and processes that will benefit the healthcare sector. You will develop medical innovations that really contribute to better care. It is a dynamic, interdisciplinary field that combines engineering with natural and life sciences, such as biology, nanotechnology, physics, electrical engineering, chemistry and mechanical engineering. During the programme you can specialise in five different tracks: Bioengineering Technologies, Imaging and In Vitro Diagnostics, Biorobotics, Medical Device Design and Physiological Signals and Systems. At the start, you will select a field of biomedical technology and a corresponding research group. The programme consists of a mix of core courses and electives, enabling you to create your own personalised master's (subject to approval). For more information about the various specialisations and the programme's structure, please visit our website.

 [UTWENTE.NL/MAG/BME](https://utwente.nl/mag/bme)

FACTS

DEGREE	MASTER OF SCIENCE
MODE OF STUDY	FULL-TIME
CREDITS	120 EC
PROGRAMME DURATION	2 YEARS
STARTS	SEPTEMBER OR FEBRUARY
LANGUAGE	ENGLISH
SPECIALISATIONS	<ul style="list-style-type: none"> ✓ BIOENGINEERING TECHNOLOGIES ✓ IMAGING AND IN VITRO DIAGNOSTICS ✓ BIOROBOTICS ✓ MEDICAL DEVICE DESIGN ✓ PHYSIOLOGICAL SIGNALS & SYSTEMS
GRADUATE JOBS	<ul style="list-style-type: none"> • SCIENCE & RESEARCH • ADVISER ON THE PURCHASE AND USE OF MEDICAL EQUIPMENT AT A HEALTHCARE INSTITUTION • CONSULTANT ON THE DEVELOPMENT OF NEW MEDICAL TECHNOLOGIES • PRODUCT ENGINEER MEDICAL DEVICES

BUSINESS ADMINISTRATION

Are you fascinated by the many social and technological changes shaking up consumer expectations, business models, supply chains, and entire markets in today's unpredictable world? Do you see yourself stepping forward to lead the way regarding innovation and sustainable business success in the international corporate arena? If so, the Master's in Business Administration may be the right choice for you.

This programme will uniquely prepare you for an international, cross-cultural, multidisciplinary career. You will develop an entrepreneurial, innovation-sensitive approach to complex business challenges while benefiting from world-class research facilities and a vibrant, international business network. Pursuing one of our challenging specialisations will give you a head start in the job market. You can also deepen your knowledge and expand your horizons by following one of our double degree programmes abroad, thereby getting a second master's degree. Does the idea of taking a Business Administration Master of Science at a university acclaimed for its societal impact and entrepreneurial spirit inspire you? Then this programme could be the right choice for you.

 [UTWENTE.NL/MAG/BA](https://utwente.nl/mag/ba)

FACTS

DEGREE	MASTER OF SCIENCE
MODE OF STUDY	FULL-TIME
CREDITS	60 EC (OR 120 EC DOUBLE DEGREE)
PROGRAMME DURATION	DURATION 1 YEAR (OR 2 YEAR DOUBLE DEGREE)
STARTS	SEPTEMBER OR FEBRUARY
LANGUAGE	ENGLISH
SPECIALISATIONS	<ul style="list-style-type: none"> ✓ DIGITAL BUSINESS & ANALYTICS ✓ ENTREPRENEURSHIP, INNOVATION & STRATEGY ✓ FINANCIAL MANAGEMENT ✓ HUMAN RESOURCE MANAGEMENT ✓ INTERNATIONAL MANAGEMENT & CONSULTANCY ✓ PURCHASING & SUPPLY MANAGEMENT ✓ STRATEGIC MARKETING & SERVICITISATION
GRADUATE JOBS	<ul style="list-style-type: none"> • FOUNDER STARTUP SUBASTA DE OCIO • SENIOR MANAGER PWC • INNOVATION MANAGER QREDITS • STRATEGIC PURCHASER VOLKSWAGEN



Applied Physics



Chemical Science & Engineering

BUSINESS INFORMATION TECHNOLOGY

Our Master's in Business Information Technology focuses on information systems deployed in business environments. You will learn to analyse the needs of an organisation and to determine how IT can support its strategy, and improve its business performance. Having acquired in-depth knowledge of information technology, you will learn to design and implement new information systems that will satisfy business requirements. This programme is supported by highly qualified researchers in Business and Computer Science, who cooperate in this programme on a 50-50 basis. With their input, you will acquire the knowledge and skills you need to effectively connect and align business and IT. You can also deepen your knowledge and expand your horizon by following our double degree programme Business Information Systems & Data Science abroad.

After your graduation, you will be able to function as an important point of contact between the various departments within a company. You will be a highly valued professional with many job options. For instance, you could work as an enterprise architect, IT manager, consultant, or business analyst. Alternatively, you may decide to use your innovation skills in your own company by becoming an entrepreneur.

 [UTWENTE.NL/MAG/M-BIT](https://utwente.nl/mag/m-bit)

FACTS

DEGREE	MASTER OF SCIENCE
MODE OF STUDY	FULL-TIME
CREDITS	120 EC
PROGRAMME DURATION	2 YEARS
STARTS	SEPTEMBER OR FEBRUARY
LANGUAGE	ENGLISH
SPECIALISATIONS	<ul style="list-style-type: none"> ✓ ENTERPRISE ARCHITECTURE & IT MANAGEMENT ✓ DATA SCIENCE & BUSINESS
GRADUATE JOBS	<ul style="list-style-type: none"> • IT MANAGER AT SHELL • INFORMATION SECURITY RISK ANALYST AT ABN AMRO • CONSULTANT ENTERPRISE ARCHITECTURE E.G. AT DELOITTE NEDERLAND AND VOLKSWAGEN AG

CHEMICAL SCIENCE & ENGINEERING

Chemical engineers are creative problem solvers who use their scientific and technical expertise to develop new chemical processes, materials and products for a wide range of applications. They are well-versed in chemistry, materials science and process engineering as well as in more physics-related areas, such as fluid dynamics and thermodynamics.

In our Master's in Chemical Science & Engineering, you will learn to combine knowledge from different fields in order to develop and implement processes, products and materials. The programme offers three specialisations: Chemical & Process Engineering, in which you will learn to design complex processes that deliver optimum performance in terms of technology, safety, economy, environment and meeting society's needs; Molecular & Materials Engineering, which focuses on the design, manufacturing, characterisation and application of new materials with high-tech features; and Materials Science & Engineering, a true multidisciplinary specialisation with a strong emphasis on the development of materials science and engineering skills at the interface of materials chemistry, applied physics and mechanical engineering.

 [UTWENTE.NL/MAG/M-CSE](https://utwente.nl/mag/m-cse)

FACTS

DEGREE	MASTER OF SCIENCE
MODE OF STUDY	FULL-TIME
CREDITS	120 EC
PROGRAMME DURATION	2 YEARS
STARTS	SEPTEMBER*
LANGUAGE	ENGLISH
SPECIALISATIONS	<ul style="list-style-type: none"> ✓ CHEMICAL & PROCESS ENGINEERING ✓ MOLECULAR & MATERIALS ENGINEERING ✓ MATERIALS SCIENCE & ENGINEERING
GRADUATE JOBS	<ul style="list-style-type: none"> • PROCESS ENGINEER IN THE (BIO) CHEMICAL INDUSTRY • DESIGNER OR CONSULTANT AT A COMPANY OR ENGINEERING FIRM • RESEARCHER AT A UNIVERSITY OR R&D DEPARTMENT

* You may start the Molecular & Materials Engineering track and the Materials Science & Engineering track in February, too, but only with the Admission Committee's approval.

CIVIL ENGINEERING & MANAGEMENT

Our Master's in Civil Engineering & Management is the leading programme of its kind in the Netherlands. It focuses on both the technical and non-technical aspects of planning, designing, constructing and servicing civil engineering projects and systems.

High-speed rail travel, dyke improvements and innovative beach nourishment are all technologically feasible nowadays. However, technology is not the only determining factor. Many other factors need to be taken into account early in the planning phase of real estate and infrastructure projects like these, such as policy-making, environmental impact, budgeting and project management. This calls for engineers who demonstrate mastery of the development process and who can oversee, analyse and predict all aspects of the design and implementation of such projects. Our programme will train you to become an engineering professional who brings technical and non-technical expertise to major civil engineering projects.

[UTWENTE.NL/MAG/CEM](https://utwente.nl/mag/CEM)

FACTS

DEGREE	MASTER OF SCIENCE
MODE OF STUDY	FULL-TIME
CREDITS	120 EC
PROGRAMME DURATION	2 YEARS
STARTS	SEPTEMBER OR FEBRUARY
LANGUAGE	ENGLISH
SPECIALISATIONS	<ul style="list-style-type: none"> ✓ INTEGRATED CIVIL ENGINEERING SYSTEMS ✓ CONSTRUCTION MANAGEMENT & ENGINEERING ✓ TRANSPORT ENGINEERING & MANAGEMENT ✓ WATER ENGINEERING & MANAGEMENT
GRADUATE JOBS	<ul style="list-style-type: none"> • ENGINEERING CONSULTANT AT ARCADIS • CONSTRUCTION MANAGER AT BALLAST NEDAM • PROJECT MANAGER AT RIJKSWATERSTAAT • RESEARCHER AT DELTARES

COMMUNICATION SCIENCE

Organisations around the globe rely on effective communication to be successful. They need academically trained communication experts who combine in-depth knowledge of communication theories with research skills, a creative mindset, and an action-oriented attitude towards solving problems with the latest technologies.

Our Master's in Communication Science combines academic rigour with practical relevance in order to train you to be just such an expert. The programme covers the most relevant themes for communication professionals in three focus area's:

1. Organisational Communication & Reputation
2. Technology & Communication
3. Digital Marketing Communication & Design.

This programme is directly related to our general research in the field of Communication Science, with a special focus on the relationships between organisation, technology, and design. When you graduate, you will be a highly trained communication professional with the insight and creativity to handle all kinds of communication issues.

[UTWENTE.NL/MAG/M-COM](https://utwente.nl/mag/M-COM)

FACTS

DEGREE	MASTER OF SCIENCE
MODE OF STUDY	FULL-TIME
CREDITS	60 EC
PROGRAMME DURATION	DURATION 1 YEAR
STARTS	SEPTEMBER OR FEBRUARY
LANGUAGE	ENGLISH
FOCUS AREA'S	<ul style="list-style-type: none"> ✓ ORGANISATIONAL COMMUNICATION & REPUTATION ✓ TECHNOLOGY & COMMUNICATION ✓ DIGITAL MARKETING COMMUNICATION & DESIGN
GRADUATE JOBS	<ul style="list-style-type: none"> • EXECUTIVE DIRECTOR AT NEWS MEDIA EUROPE • SENIOR PRIVACY COUNSEL AT THE HEINEKEN COMPANY • SENIOR MANAGER MOBILE GAME OPERATIONS AT BIG FISH GAMES • SENIOR BRAND STRATEGIST AT CARTILS BRANDING & PACKAGE DESIGN • MARKETING & DIGITAL MANAGER AT PHILIPS INNOVATION SERVICES





COMPUTER SCIENCE

In today's smart society, humans, organisations and systems increasingly rely on networked digital technology. Our Master's in Computer Science will enable you to contribute to this smart society as a researcher, designer or entrepreneur. You will study key aspects, such as reliable, durable software, cyberphysical systems, data science or cybersecurity and privacy. You will also get familiar with specific application areas, such as energy or health and well-being.

The University of Twente is considered a global leader in Computer Science research, with strong research pillars in Dependable Networked Systems, Human-centred Computing and Data Science. In this programme, you will be taught by and work closely with the researchers involved. As a graduate, you will have excellent career prospects. For example, you may become a software developer, an ICT security specialist, a data scientist, a computer science researcher, or the chief technology officer of your own ICT start-up.

[UTWENTE.NL/MAG/CS](https://utwente.nl/mag/cs)

FACTS

DEGREE	MASTER OF SCIENCE
MODE OF STUDY	FULL-TIME
CREDITS	120 EC
PROGRAMME DURATION	2 YEARS
STARTS	SEPTEMBER OR FEBRUARY
LANGUAGE	ENGLISH
SPECIALISATIONS	<ul style="list-style-type: none"> ✓ CYBER SECURITY ✓ DATA SCIENCE & TECHNOLOGY ✓ INTERNET SCIENCE & TECHNOLOGY ✓ SOFTWARE TECHNOLOGY
GRADUATE JOBS	<ul style="list-style-type: none"> • SOFTWARE DEVELOPER AT ING • DATA SCIENTIST AT NEDAP OR OCE • DIGITAL EXPERT AT THE DUTCH POLICE AGENCY

CONSTRUCTION MANAGEMENT & ENGINEERING

The construction industry is changing rapidly. New techniques, shifting roles, complicated logistics and globalisation are significantly impacting the nature of construction projects. Today's complex and multidisciplinary projects, often set in a dynamic environment, require a new breed of engineers with the expertise to combine engineering knowledge with management skills.

Our Master's in Construction Management & Engineering can train you to be exactly that kind of engineer: a hands-on expert, equipped to combine the technical aspects of civil engineering projects with the non-technical aspects. This broad programme uses cutting-edge technology to bring together individual technical approaches and processes shaped by governance issues, societal trends and management methodologies. We developed this programme in close association with the construction industry; it is both project-based and geared to process and design.

[UTWENTE.NL/MAG/CME](https://utwente.nl/mag/cme)

FACTS

DEGREE	MASTER OF SCIENCE
MODE OF STUDY	FULL-TIME
CREDITS	120 EC
PROGRAMME DURATION	2 YEARS
STARTS	SEPTEMBER OR FEBRUARY
LANGUAGE	ENGLISH
PROFILES	<ul style="list-style-type: none"> ✓ MARKETS & ORGANISATION OF CONSTRUCTION ✓ DIGITAL TECHNOLOGIES IN CONSTRUCTION
GRADUATE JOBS	<ul style="list-style-type: none"> • SYSTEMS ENGINEER AT HEIJMANS • PROJECT MANAGER AT ROYAL HASKONINGDHV • TECHNICAL MANAGER AT RIJKSWATERSTAAT • RESEARCH SCIENTIST AT TNO

EDUCATIONAL SCIENCE & TECHNOLOGY

If you're fascinated by learning, education, and training, yet you do not intend to become a teacher, you can pursue your passion in our Master's in Educational Science & Technology (EST).

This programme focuses on the design and evaluation of teaching and learning programmes in schools and organisations. The scope is wide: from designing learning materials for young children to talent and leadership development. As an EST student you will become technologically savvy, while never losing sight of the human dimension. You will learn about theories and gain expertise in learning and assessment, instructional design and implementation, (technology-based) learning environments, and human-centric educational interventions. You will also discover how to design solutions to complex educational challenges, how to conduct research that is scientifically robust and practically relevant, and how to serve schools and organisations as a consultant.

[UTWENTE.NL/MAG/EST](https://utwente.nl/mag/est)

FACTS

DEGREE	MASTER OF SCIENCE
MODE OF STUDY	FULL-TIME AND PART-TIME
CREDITS	60 EC
PROGRAMME DURATION	1 YEAR (FT)
STARTS	SEPTEMBER OR FEBRUARY
LANGUAGE	ENGLISH
SPECIALISATIONS	-
GRADUATE JOBS	<ul style="list-style-type: none"> • INNOVATION MANAGER AT RABOBANK • LEARNING AND DEVELOPMENT PROJECT MANAGER AT OXFAM • SENIOR ADVISER NATIONAL INSTITUTE FOR CURRICULUM DEVELOPMENT • INTERNATIONAL PRIMARY SCHOOL TEAM LEADER

ELECTRICAL ENGINEERING

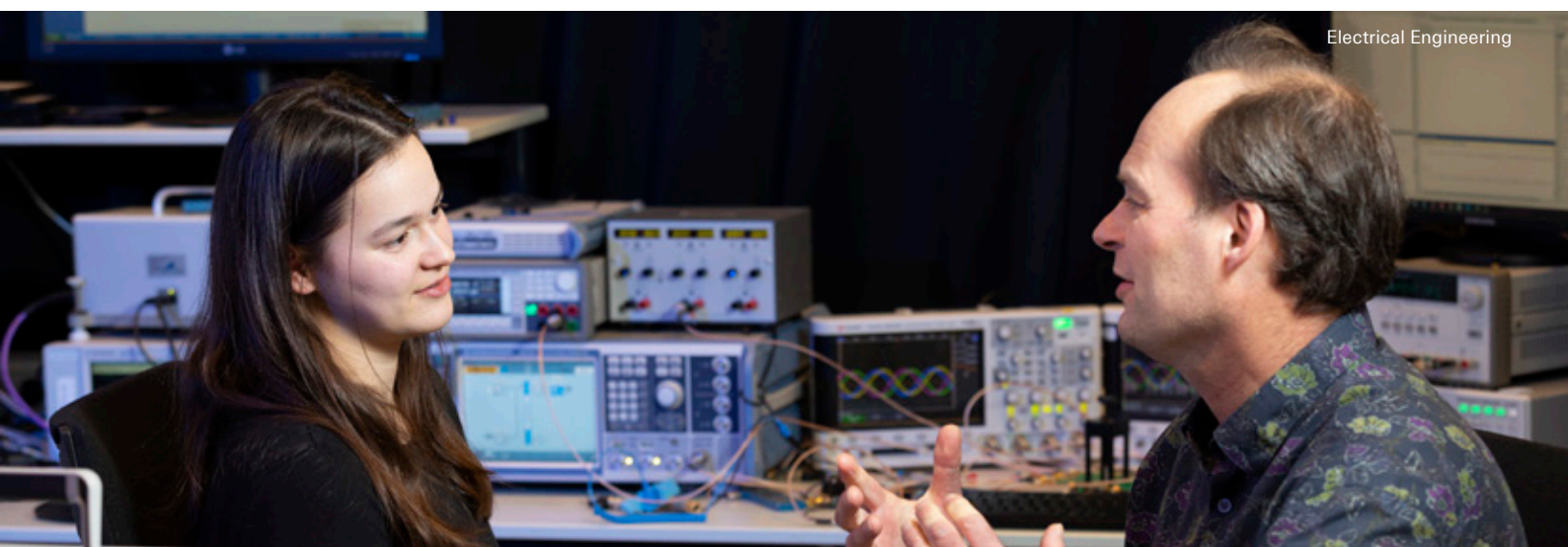
Are you eager to invent new methods and technologies that will pave the way for the next steps in high-tech, wirelessly connected, electronics-based systems? Would you like to learn how to create a robotic avatar system, a lookalike representing you remotely? Are you interested in developing lab-on-a-chip technologies to explore Alzheimer's disease? What about the design of a Radio Frequency transmitter for a 5G massive Multi Input Multi Output base station? In our Master's in Electrical Engineering you will learn from world-class researchers how to push the boundaries of technology in order to create new functionalities or to enhance, accelerate or scale down electronics-based and electronics-enhanced systems.

Thanks to the various specialisations we offer, you can tailor this programme to your own personal interests. This programme focuses on innovation in the fields of information systems, data science, robotics, semiconductor and nanotechnologies, Internet of Things, telecommunication and radio systems, biomedical applications and power electronics. You can shape your own future as well as the future of our world – either as a researcher inventing new technologies and methods, as a designer developing new products and services, or as an organiser managing an engineering department or providing consulting services.

[UTWENTE.NL/MAG/M-EE](https://utwente.nl/mag/m-ee)

FACTS

DEGREE	MASTER OF SCIENCE
MODE OF STUDY	FULL-TIME
CREDITS	120 EC
PROGRAMME DURATION	2 YEARS
STARTS	SEPTEMBER OR FEBRUARY
LANGUAGE	ENGLISH
SPECIALISATIONS	<ul style="list-style-type: none"> ✓ LAB ON A CHIP SYSTEMS ✓ NEUROTECHNOLOGY & BIOMECHANICS ✓ DEPENDABLE INTEGRATED SYSTEMS ✓ ROBOTICS AND MECHANICS ✓ COMMUNICATION NETWORKS ✓ INTEGRATED CIRCUIT DESIGN ✓ INTEGRATED OPTICAL SYSTEMS ✓ NANOELECTRONICS ✓ COMPUTER VISION AND BIOMETRICS ✓ MICRO SENSORS AND SYSTEMS ✓ SEMICONDUCTOR DEVICES & TECHNOLOGY ✓ RADIO SYSTEMS ✓ POWER ELECTRONICS
GRADUATE JOBS	<ul style="list-style-type: none"> • R&D DIRECTOR AT MALVERN ANALYTICAL • MECHANICS DESIGNER AT DEMCON • SYSTEMS ARCHITECT AT PRODRIVE • CHIP DESIGNER FOR MEDICAL APPLICATIONS (IOMT)



Electrical Engineering

EMBEDDED SYSTEMS

Is it possible to design an exoskeleton controlled by the user's nervous system?
Can we prove that an airbag inflates in time? How far are we in developing
embedded software for maximising the energy efficiency of a power grid?

The Master's in Embedded Systems focuses on the combination of hardware (electrical engineering) and software (computer science) for applications ranging from pacemakers, smartphones, anti-lock brakes on cars to set-top boxes for digital TVs and Ethernet switches for high-speed networking. You will focus on topics such as control engineering, integrated circuit design, computer architecture, communication networks and real-time operating systems.

This is a 4TU programme, which means you can take relevant courses at three Dutch universities of technology. Hardware/software systems, increasingly, are being embedded in everyday products and places, due to the exponential increase in computing power, ubiquitous connectivity and the convergence of technology. It goes without saying that embedded systems engineers have excellent career prospects.

 [UTWENTE.NL/MAG/EMS](https://utwente.nl/mag/ems)

FACTS

DEGREE	MASTER OF SCIENCE
MODE OF STUDY	FULL-TIME
CREDITS	120 EC
PROGRAMME DURATION	2 YEARS
STARTS	SEPTEMBER OR FEBRUARY
LANGUAGE	ENGLISH
SPECIALISATIONS	-
GRADUATE JOBS	<ul style="list-style-type: none"> • ASIC DESIGNER AT NORDIC SEMICONDUCTOR (TRONDHEIM, NORWAY) • EMBEDDED SOFTWARE ENGINEER AT XSSENS (ENSCHDE) • EMBEDDED ENGINEER AT BENCHMARK ELECTRONICS (ALMELO)

4TU.

ENVIRONMENTAL & ENERGY MANAGEMENT

Our Master's in Environmental & Energy Management (MEEM) is a one-year programme, offering three specialisations: Water Management, Environmental Management, and Energy Management.

The aim of this programme is to provide future decision-makers, in companies, and governmental and non-governmental organisations, with the knowledge and skills needed to manage sustainability in a technological context. In this programme, you will learn how to analyse and act in a sustainable, proactive way, whether in policy, production or resource utilisation. The overall goal is to enable you to contribute to capacity building, and to the management of socio-technical challenges in the field of sustainable development. As a graduate, you will be able to develop, implement, monitor and evaluate water, environmental and energy management programmes, policies and projects in a local or global context.

 [UTWENTE.NL/MAG/EEM](https://utwente.nl/mag/eem)

FACTS

DEGREE	MASTER OF SCIENCE
MODE OF STUDY	FULL-TIME (PART-TIME TO BE DISCUSSED)
CREDITS	60 EC
PROGRAMME DURATION	1 YEAR
STARTS	SEPTEMBER
LANGUAGE	ENGLISH
SPECIALISATIONS	<ul style="list-style-type: none"> ✓ ENVIRONMENTAL MANAGEMENT ✓ ENERGY MANAGEMENT ✓ WATER MANAGEMENT
GRADUATE JOBS	<ul style="list-style-type: none"> • BUSINESS ANALYST AT KLM • PHD POSITION AT UT (CSTM) • PROGRAMME MANAGER CLIMATE & ENERGY AT FRIEDRICH-EBERT-STIFTUNG • ENVIRONMENTAL COMPLIANCE ADVISER AT USAID WEST AFRICA

LOCATION: LEEUWARDEN, THE NETHERLANDS

EUROPEAN STUDIES

Our one-year Master's in (Global and) European Studies will give you the expertise you need to operate in the complex, fascinating environment called Europe, in which many government levels and stakeholders convene. You can combine this Master's with a Master's in Comparative Public Governance at the German University of Münster and obtain a double degree. This option takes two years.

Brussels is not the only place in need of experts who understand Europe and the global world. National governments, private firms, the non-profit sector and NGOs all require professionals who know how Europe operates, both internally and globally. In this programme, you will study the interactions between national, European and international bodies, and how they respond to complex global challenges. If you want to prepare yourself for helping Europe to balance technological advances with human values, this programme is the place to do it.

[UTWENTE.NL/MAG/ES](https://utwente.nl/mag/es)

FACTS

DEGREE	MASTER OF SCIENCE
MODE OF STUDY	FULL-TIME
CREDITS	60 EC
PROGRAMME DURATION	1 YEAR (OR A 2-YEAR DOUBLE DEGREE PROGRAMME)
STARTS	SEPTEMBER
LANGUAGE	ENGLISH
SPECIALISATIONS	-
GRADUATE JOBS	<ul style="list-style-type: none"> • SECURITY & PRIVACY POLICY MANAGER AT TECHAMERICA EUROPE • POLITICAL ADVISER AT EUROPEAN PARLIAMENT • POLICY OFFICER AT MAX VAN DER STOEL FOUNDATION

GEO-INFORMATION SCIENCE & EARTH OBSERVATION

Imagine deploying drones to assess disaster damage and to gather data that can be instantly used to take action. Imagine helping farmers in drought prone areas to predict crop yield or taking augmented reality to a level where it could actually help solve problems in the real world. These are just a few of the many areas you can enter with geo-information science and earth observation.

From traditional map-making to creating modern data-driven solutions, this field offers an incredible variety of opportunities. It has been identified as one of the three fastest growing industries of the 21st century. Would you like to be at the forefront of this growth wave? Are you looking for a first-rate master's that will unlock your future in multiple ways? Does the prospect of living and studying in an international environment appeal to you? Then ITC at the University of Twente could be just the ticket. This programme will give you a broad overview of the most relevant topics in the field and offer plenty of room for specialisation. After graduation, you will almost literally be able to be what you want to be.

[UTWENTE.NL/MAG/GEO](https://utwente.nl/mag/geo)

FACTS

DEGREE	MASTER OF SCIENCE
MODE OF STUDY	FULL-TIME
CREDITS	120 EC
PROGRAMME DURATION	2 YEARS
STARTS	SEPTEMBER
LANGUAGE	ENGLISH
SPECIALISATIONS	<ul style="list-style-type: none"> ✓ APPLIED REMOTE SENSING FOR EARTH SCIENCES ✓ GEOINFORMATICS ✓ GEO-INFORMATION MANAGEMENT FOR LAND ADMINISTRATION ✓ NATURAL HAZARDS AND DISASTER RISK REDUCTION ✓ NATURAL RESOURCES MANAGEMENT ✓ URBAN PLANNING & MANAGEMENT ✓ WATER RESOURCES & ENVIRONMENTAL MANAGEMENT ✓ FREE SPECIALISATION
GRADUATE JOBS	<ul style="list-style-type: none"> • CONSULTANT AT CGI (THE NETHERLANDS) • HEAD OF DEPARTMENT KENYA WATER INSTITUTE (KENYA) • PRODUCT ENGINEER AT ESRI (USA) • ENVIRONMENTAL ENGINEER AT WATER ENVIRONMENT LTD (UK)



GEOGRAPHICAL INFORMATION MANAGEMENT & APPLICATIONS

Today's society requires more and more geographical information. Think of physical planning, analysing the spread of epidemic diseases, risk management, navigation systems, location-based services, movement analysis, augmented reality, the increasing use of maps, and volunteered geographical information.

Geographical Information Management & Applications (GIMA) is a comprehensive master's, focusing on the management and application of geographical information from a scientific perspective. Two additional aspects contribute to the uniqueness of the programme: GIMA is a joint venture involving four renowned Dutch universities Utrecht, Delft, Twente and Wageningen; and it is a blended learning programme, enabling you to do most of your studying from the place at which you study best (home or office). Only the first and the last weeks of each module are classroom-based.

[UTWENTE.NL/MAG/GIMA](https://utwente.nl/mag/gima)

FACTS

DEGREE	MASTER OF SCIENCE
MODE OF STUDY	FULL-TIME OR PART-TIME/ BLENDED LEARNING
CREDITS	120 (INCLUDING 30 CREDITS INTERNSHIP)
PROGRAMME DURATION	22 MONTHS (FULL-TIME) / 3.8 YEARS (PART-TIME)
STARTS	SEPTEMBER
LANGUAGE	ENGLISH
SPECIALISATIONS	-
GRADUATE JOBS	<ul style="list-style-type: none"> • GIS SPECIALIST AND PROJECT LEADER AT GEOCENSUS BV • BUSINESS CONSULTANT AT ESRI NEDERLAND • CHIEF METEOROLOGY AT NATO • GIS ADVISER AT MINISTRY OF AGRICULTURE AND ENVIRONMENT IN SLOVENIA

HEALTH SCIENCES

Are you fascinated by new health technologies, their impact and how they can best be used? Would you like to predict trends in healthcare, or optimise policy, management and healthcare procedures? If so, the Master's in Health Sciences may be the perfect choice for you.

There is a great need for health scientists who combine a keen understanding of technology with the ability to make sharp analyses and offer solutions. This programme educates health scientists who are able to design solutions to the challenges presented by modern healthcare. You will learn how to convert the results of fundamental and applied clinical research into modern customised healthcare solutions. To this end, you will be familiar with new medical and information technologies including virtual reality, augmented reality and embodied monitoring.

You can choose one of the following specialisations:

- » Personalised Monitoring and Coaching focuses on using technology to create innovative personalised eHealth services
- » Optimisation of Healthcare Processes addresses finances, logistics and management of healthcare.
- » Innovation in Public Health focuses on innovations to improve public healthcare.

[UTWENTE.NL/MAG/M-HS](https://utwente.nl/mag/m-hs)

FACTS

DEGREE	MASTER OF SCIENCE
MODE OF STUDY	FULL-TIME
CREDITS	60 EC
PROGRAMME DURATION	1 YEAR
STARTS	SEPTEMBER
LANGUAGE	ENGLISH
SPECIALISATIONS	<ul style="list-style-type: none"> ✓ PERSONALISED MONITORING AND COACHING ✓ OPTIMISATION OF HEALTHCARE PROCESSES ✓ INNOVATION IN PUBLIC HEALTH
GRADUATE JOBS	<ul style="list-style-type: none"> • HOSPITALS AND HOME CARE • CONSULTANCY AGENCIES • GOVERNMENT • MEDICAL COMPANIES

INDUSTRIAL DESIGN ENGINEERING

Become a 'designer' and enrich people's lives with new and/or better products while continuously improving the development processes involved.

In your daily life, without realising, you are continuously surrounded by products. But who designed these products? Why are they shaped the way they are? What user demands do they meet, what processes lie behind the development and what technologies are involved in that process? That's what the Master's in Industrial Design Engineering (IDE) is all about.

This two-year, English-taught Master's enables you to become a 'designer', an industrial design engineer who does not only know how to design and engineer a (part of a) product, but goes beyond that. With in-depth, scientific insights, you can overlook the whole design and engineering process and know how to continuously develop and improve the products and the processes involved. In the end, it's about developing products that enrich people's lives.

 [UTWENTE.NL/MAG/M-IDE](https://utwente.nl/mag/m-ide)

FACTS

DEGREE	MASTER OF SCIENCE
MODE OF STUDY	FULL-TIME
CREDITS	120 EC
PROGRAMME DURATION	2 YEARS
STARTS	SEPTEMBER OR FEBRUARY
LANGUAGE	ENGLISH
SPECIALISATIONS	<ul style="list-style-type: none"> ✓ HUMAN TECHNOLOGY RELATIONS ✓ MANAGEMENT OF PRODUCT DEVELOPMENT ✓ EMERGING TECHNOLOGY DESIGN
GRADUATE JOBS	<ul style="list-style-type: none"> • PACKAGING DESIGNER AT PHILIPS • DESIGN SPECIALIST AT ALBERT HEIJN • R&D ENGINEER AT CLEAR VISION COOLING • PHD RESEARCHER AT COVENTRY UNIVERSITY

INDUSTRIAL ENGINEERING & MANAGEMENT

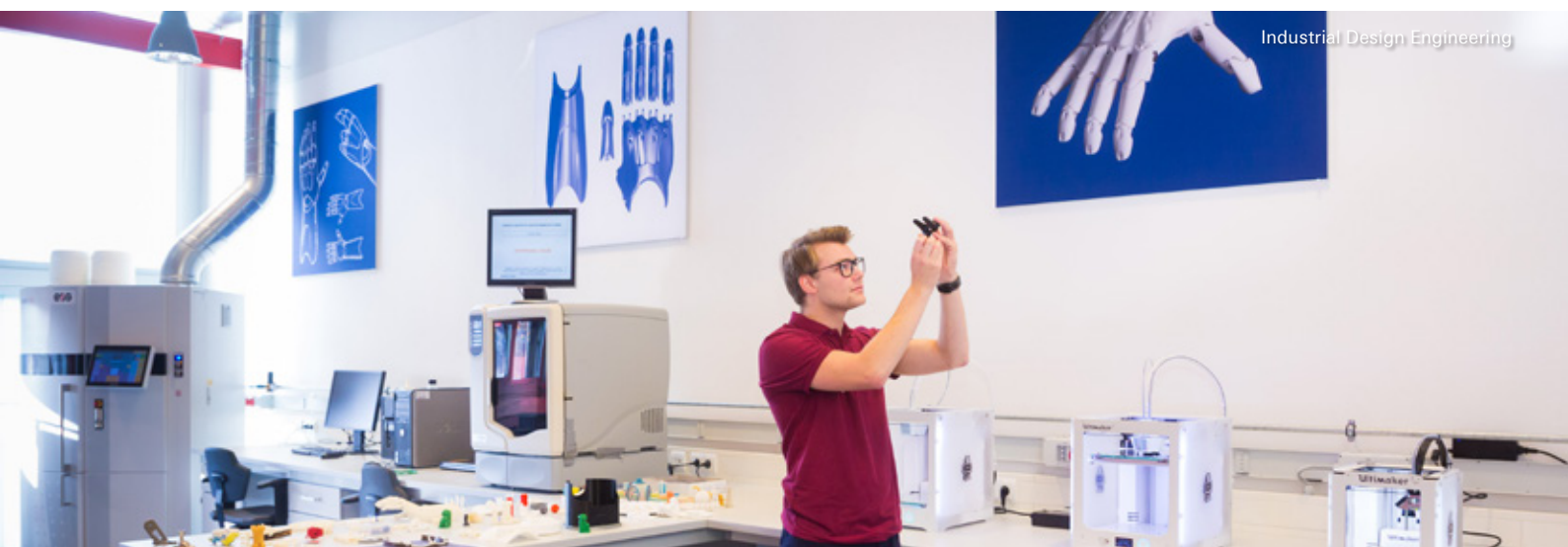
In our globalised world, communication depends heavily on highly complex information technology. This is making the job of managing and controlling business more and more complicated. In our Master's in Industrial Engineering & Management, we will train you to be an engineer who can tackle these kinds of issues.

This programme will enable you to develop, analyse and optimise organisational processes and management from a technological perspective. You will aim to improve productivity, product quality and labour quality. For example, we use simulation models to thoroughly and safely test new management approaches before we put them into practice. Our research staff have excellent contacts with businesses and healthcare organisations. This means you will have plenty of real-world opportunities to pursue your graduation project, giving you outstanding career prospects. Many of our students find a job before graduation.

 [UTWENTE.NL/MAG/M-IE](https://utwente.nl/mag/m-iem)

FACTS

DEGREE	MASTER OF SCIENCE
MODE OF STUDY	FULL-TIME
CREDITS	120 EC
PROGRAMME DURATION	2 YEARS
STARTS	SEPTEMBER OR FEBRUARY
LANGUAGE	ENGLISH
SPECIALISATIONS	<ul style="list-style-type: none"> ✓ FINANCIAL ENGINEERING & MANAGEMENT ✓ HEALTHCARE TECHNOLOGY & MANAGEMENT ✓ PRODUCTION & LOGISTICS MANAGEMENT ✓ ADDITIONAL SPECIALISATIONS IN VARIOUS DOMAINS, FOR EXAMPLE, MAINTENANCE & INDUSTRIAL DESIGN
GRADUATE JOBS	<ul style="list-style-type: none"> • STRATEGIC PRODUCT MANAGER AT GROLSCH • OPERATIONS MANAGER AT SCANIA • CONSULTANT HEALTHCARE AT MST HOSPITAL • RISK ANALYST AND BUSINESS INTELLIGENCE CONSULTANT AT DUTCH AUTHORITY FOR THE FINANCIAL MARKETS (AFM)



Industrial Design Engineering

INTERACTION TECHNOLOGY

Are you eager to work on the smartest and best interactive technologies, while also engaging with customers and end users? Are you as excited about computer science, interactive systems or electrical engineering as you are about analysing human behaviour? Are you passionate about developing technological solutions to fulfil the real needs and wants of people and society? Then our Master's in Interaction Technology may be the right choice for you.

This unique programme will take you to the cutting edge of science and technology. Depending on your talent and preferences, it will equip you for a role as either an entrepreneur, a researcher or a designer. As a graduate, you might launch a social robot or Internet of Things startup, join a high-tech company as innovator, or lead research in new interactive tech solutions. You will have what it takes to recognise needs and opportunities, develop outstanding and meaningful interactive solutions and get them to the people who need them.

This programme is also available as part of a double degree offered by the EIT Digital Master School programme (masterschool.eitdigital.eu) in Human Computer Interaction and Design, which combines Interaction Technology with a business minor.

 [UTWENTE.NL/MAG/ITECH](https://utwente.nl/mag/itech)

FACTS

DEGREE	MASTER OF SCIENCE
MODE OF STUDY	FULL-TIME
CREDITS	120 EC
PROGRAMME DURATION	2 YEARS
STARTS	SEPTEMBER OR FEBRUARY
LANGUAGE	ENGLISH
SPECIALISATIONS	-
GRADUATE JOBS	<ul style="list-style-type: none"> • DESIGNER AND INNOVATOR AT A HIGH-TECH COMPANY • RESEARCHER FOR NEW INTERACTIVE TECH SOLUTIONS • ENTREPRENEUR, FOR EXAMPLE, IN SOCIAL ROBOTICS OR INTERNET OF THINGS • USER EXPERIENCE (UX) DESIGNER

MECHANICAL ENGINEERING

Mechanical engineers focus on the design and analysis of machinery, structures and products, as well as production processes. They place high-tech solutions in a human context – from large-scale industrial installations to precision mechanisms. They are involved in the entire process, from generating the initial idea to its design and analysis, and onward to the development of products, processes and systems.

Our Master's in Mechanical Engineering is designed for students who are keen to gain qualitative expertise that spans all phases of the lifecycle of mechanical engineering systems and objects within a societal and environmental context. It covers fields such as solid mechanics, fluid dynamics, heat transfer, and thermodynamics, while incorporating aspects of mechatronics, elastomer and composites, and computer science. Application areas include the aerospace, offshore, manufacturing and automotive industries. UT researchers collaborate with important players in all of these areas. Our many contacts with industry mean we can guarantee interesting internships. Mechanical Engineering graduates are in high demand in the Netherlands and abroad.

 [UTWENTE.NL/MAG/M-ME](https://utwente.nl/mag/m-me)

FACTS

DEGREE	MASTER OF SCIENCE
MODE OF STUDY	FULL-TIME
CREDITS	120 EC
PROGRAMME DURATION	2 YEARS
STARTS	SEPTEMBER OR FEBRUARY
LANGUAGE	ENGLISH
SPECIALISATIONS	<ul style="list-style-type: none"> ✓ AERONAUTICS ✓ DESIGN AND MANUFACTURING ✓ ENERGY AND FLOW ✓ MAINTENANCE ENGINEERING AND OPERATIONS ✓ HIGH-TECH SYSTEMS AND MATERIALS ✓ PERSONALISED HEALTH TECHNOLOGY ✓ ROBOTICS
GRADUATE JOBS	<ul style="list-style-type: none"> • PROCESS ENGINEER AT PHILIPS • MAINTENANCE SUPERVISOR AT SHELL • MANUFACTURING ENGINEER AT VDL ENABLING TECHNOLOGIES • AERODYNAMIC ENGINEER AT NETHERLANDS AEROSPACE CENTRE

NANOTECHNOLOGY

Nanotechnology is a multidisciplinary research field dealing with dimensions and tolerances of less than 1000 nm and focusing on the manipulation of individual atoms and molecules and the design of nano-devices. In our Nanotechnology Master's, you can become an expert in this exciting field.

Nanotechnology is all about studying the changes that the physical and chemical properties of a material undergo at nanoscale in order to design and develop functional materials, structures, devices and systems. Our programme is highly multidisciplinary, combining traditional disciplines, such as physics, chemistry, electrical engineering and biology. You will learn all about manufacturing and characterising nanomaterials and designing nanodevices. Then you can specialise in (application of) Solid State Matter, (Bio)Molecular Matter or nano-engineered devices. Our programme has a strong research component and many graduates continue with a PhD, either here at the MESA+ Institute or elsewhere in the world. With a Master's in Nanotechnology, you will also be an attractive employee to all kinds of high-tech companies creating new materials, technologies or products in sectors such as energy, water, healthcare or electronics.

[UTWENTE.NL/MAG/NANO](https://utwente.nl/mag/nano)

PHILOSOPHY OF SCIENCE, TECHNOLOGY & SOCIETY

Are you fascinated by the role of science and technology in society? Are you eager to tackle complex, tech-related issues, such as privacy concerns surrounding coronavirus apps, or the use of artificial intelligence for identifying future criminals? Are you itching to explore – Black Mirror-like – the ethics and implications of tomorrow's technologies? And would you like to do that in an international academic programme that brings together philosophers, engineers and social scientists? Then the unique two-year, English-taught Master's in Philosophy of Science, Technology & Society is the right choice for you.

You will study how developers, potential users, funders, as well as regulators of new technologies in society interact with each other, both creating and responding to novel trends. What's more, you will learn to explore the questions behind the questions. How does our society validate knowledge, or decide for or against certain technological innovations? One of the programme's characteristics valued most by students is its rich mixture of educational and cultural backgrounds. Working with staff and students coming from such diverse backgrounds is demanding and fun. Our international profile – with staff and students from all over the world – will add to the richness of your experience here, as you develop a broad perspective, strong cross-cultural skills and a strong global network.

[UTWENTE.NL/MAG/PSTS](https://utwente.nl/mag/psts)

FACTS

DEGREE	MASTER OF SCIENCE
MODE OF STUDY	FULL-TIME
CREDITS	120 EC
PROGRAMME DURATION	2 YEARS
STARTS	SEPTEMBER
LANGUAGE	ENGLISH
SPECIALISATIONS	-
GRADUATE JOBS	<ul style="list-style-type: none"> RESEARCHER AT THE MESA+ INSTITUTE FOR NANOTECHNOLOGY R&D ENGINEER AT E.G. ASML OR DEMCON START YOUR OWN COMPANY LIKE E.G. EUREKITE OR MICRONIT LABORATORY LEADER AT BASF

FACTS

DEGREE	MASTER OF SCIENCE
MODE OF STUDY	FULL-TIME
CREDITS	120 EC
PROGRAMME DURATION	2 YEARS
STARTS	SEPTEMBER
LANGUAGE	ENGLISH
SPECIALISATIONS	-
GRADUATE JOBS	<ul style="list-style-type: none"> SENIOR PROJECT MANAGER, DANISH BOARD OF TECHNOLOGY DIRECTOR, RECYCLING NETWORK BENELUX ADVISER, THE PRIVACY COMPANY LEAD USER EXPERIENCE DESIGNER, INNOVALOR





Public Administration

PSYCHOLOGY

In our Master's in Psychology, you will not only examine why people act the way they do, but also acquire the knowledge and understanding of psychological theories needed to solve real-life problems.

You will design effective and workable solutions for individuals or groups, using technological applications where possible. These might include computer games that enhance learning skills, online healthcare interventions or apps for reporting neighbourhood crime. What makes our programme unique is the applied nature of our five specialisations. The position and sector you will work in after completing the master's, will partly depend on your specialisation. Psychologists are perhaps most commonly associated with the healthcare profession, but you may also find yourself working as a consultant, project manager or coach in business, education, science or the government sector.



FACTS

DEGREE	MASTER OF SCIENCE
MODE OF STUDY	FULL-TIME
CREDITS	60 EC
PROGRAMME DURATION	1 YEAR
STARTS	SEPTEMBER OR FEBRUARY
LANGUAGE	ENGLISH
SPECIALISATIONS	<ul style="list-style-type: none"> ✓ CONFLICT, RISK & SAFETY ✓ HEALTH PSYCHOLOGY & TECHNOLOGY ✓ HUMAN FACTORS & ENGINEERING PSYCHOLOGY ✓ LEARNING SCIENCES ✓ POSITIVE CLINICAL PSYCHOLOGY & TECHNOLOGY (SELECTION PROCEDURE FOR THIS SPECIALISATION IN 2022-2023)
GRADUATE JOBS	<ul style="list-style-type: none"> • E-LEARNING CONSULTANT AT BRIGHT ALLEY • RESEARCHER AND INTERACTION DESIGNER AT NEDAP • PSYCHOLOGIST IN MENTAL HEALTHCARE • SPECIALIST SAFETY AT SAFETY REGION

PUBLIC ADMINISTRATION

Our top-rated Master's in Public Administration will enable you to tackle the grand challenges of our current and future society. This programme is unique, as it will equip you to combine public administration expertise with cross-disciplinary research in a domain you are excited about, for example, healthcare, urban innovation, (cyber) security or sustainability.

We live in a complex, constantly changing world facing major technological, ecological, social and geopolitical challenges. In this programme, you will learn to analyse the political and administrative dimensions of these challenges. You will acquire the skills and conceptual tools needed to engage in descriptive and explanatory research for real-life challenges. Your studies will cover governance, policy-making, and management practices on different scales. In elective courses and during your thesis you can further specialise in a domain of your own interest, thereby tailoring your studies to the career you have in mind, while retaining maximum flexibility in terms of your employability.



UTWENTE.NL/MAG/PA

FACTS

DEGREE	MASTER OF SCIENCE
MODE OF STUDY	FULL-TIME
CREDITS	60 EC
PROGRAMME DURATION	1 YEAR
STARTS	SEPTEMBER OR FEBRUARY
LANGUAGE	ENGLISH
SPECIALISATIONS	CHECK THE WEBSITE FOR OUR PROFILES
GRADUATE JOBS	<ul style="list-style-type: none"> • FORENSIC AUDITOR AT KPMG • HEAD OF CYBER SECURITY AT MINISTRY OF FOREIGN AFFAIRS • CONSULTANT AT VDI/VDE-IT

ROBOTICS

From self-driving cars, robotic exoskeletons, to social robots interacting with people with dementia: in today's smart society, robotics plays a vital role in how we work and live. But how can you control and design these robotic systems, and moreover, how can you make sure that they blend into our society seamlessly? The new Master's in Robotics will give you a firm grasp of both the technology and the wider context of robotic systems.

You will gain insight into the entire process of robotic development, from ideation, modelling and prototyping right through to commercial application and societal acceptance. Working in small multidisciplinary teams on real-life challenges, you will cover all disciplines involved, such as mechatronics, artificial intelligence and robot interaction, while also tackling ethical, legal, societal, and economic aspects.

[UTWENTE.NL/MAG/ROB](https://utwente.nl/mag/rob)

FACTS

DEGREE	MASTER OF SCIENCE
MODE OF STUDY	FULL-TIME
CREDITS	120 EC
PROGRAMME DURATION	2 YEARS
STARTS	INTENDED START DATE SEPTEMBER 2022
LANGUAGE	ENGLISH
SPECIALISATIONS	<ul style="list-style-type: none"> • MECHATRONICS AND PHYSICAL AI • ALGORITHMS AND SOFTWARE AI • HUMAN-ROBOT INTERACTION AND SOCIAL AI
GRADUATE JOBS	<ul style="list-style-type: none"> • ROBOTICS SYSTEMS ENGINEER • MECHATRONICS ENGINEER • INNOVATION MANAGER • TECHNICAL CONSULTANT

SCIENCE EDUCATION & COMMUNICATION

- TEACHER EDUCATION PROGRAMME

If you have a bachelor's or master's degree in a technical field and you are interested in sharing your knowledge with young people, our (partly Dutch-taught) Master's in Science Education & Communication is the right choice for you.

This Master's leads to the official teaching certificate for Dutch secondary education in one of five specialisations: Mathematics, Physics, Chemistry, Computer sciences and Research & Design (O&O). Throughout the programme, you will gain the skills needed to become a top-notch secondary school teacher in chemistry, physics, mathematics, computer science or research & design. As a teacher, you can make a difference. You will use your academic background to challenge, inspire, and enthuse your pupils and to promote solid scientific and technical thinking. Together with your future colleagues at school, you will prepare a new generation of young people for their future.

[UTWENTE.NL/MAG/SEC](https://utwente.nl/mag/sec)

FACTS

DEGREE	MASTER OF SCIENCE
MODE OF STUDY	FULL-TIME OR PART-TIME
CREDITS	120 EC
PROGRAMME DURATION	2 YEARS
STARTS	SEPTEMBER OR FEBRUARY
LANGUAGE	DUTCH/ENGLISH
SPECIALISATIONS	MATHEMATICS, PHYSICS, CHEMISTRY, COMPUTER SCIENCES AND RESEARCH & DESIGN (O&O)
GRADUATE JOBS	SECONDARY EDUCATION TEACHER IN CHEMISTRY, PHYSICS, MATHEMATICS, COMPUTER SCIENCE AND RESEARCH & DESIGN



SPATIAL ENGINEERING

Major multi-level spatial problems, also known as wicked problems, require multidisciplinary solutions and broad thinking. The Master's in Spatial Engineering prepares you to address these problems by combining technical and socio-economic knowledge with a strong foundation in spatial data analysis and modelling. Think, for example, of the distribution of limited natural resources, of water, energy or food security, of catastrophic consequences of natural and man-made disasters, or of the unplanned development of mega-cities.

Do you have a strong affinity with technology and systems and are you inspired by large-scale, complex challenges? Are you a creative thinker willing and able to look beyond the obvious solutions? Are you eager to engage with what is happening in the world and to use your skills to make our planet more sustainable? If so, the Master's in Spatial Engineering at the University of Twente may be just up your street.

[UTWENTE.NL/MAG/SE](https://utwente.nl/mag/se)

FACTS

DEGREE	MASTER OF SCIENCE
MODE OF STUDY	FULL-TIME
CREDITS	120 EC
PROGRAMME DURATION	2 YEARS
STARTS	SEPTEMBER
LANGUAGE	ENGLISH
SPECIALISATIONS	-
GRADUATE JOBS	<ul style="list-style-type: none"> • ASSISTANT PROJECT LEAD AT BT GEOCONSULT BV • RESEARCHER DATASPECIALIST AT KAW ARCHITECTS • PROCESS CONSULTANT AT THE DUTCH DG FOR PUBLIC WORKS AND WATER MANAGEMENT • SOFTWARE ENGINEER AT OPENG.CH LLC • EARTH OBSERVATION FOR HUMANITARIAN ACTION, UNIVERSITÄT SALZBURG

SUSTAINABLE ENERGY TECHNOLOGY

The two-year Master's in Sustainable Energy Technology invites you to gain in-depth understanding of energy technology and engineering applied to provide our society with sustainable energy supply and demand. In addition to the technology-oriented courses, you will have the opportunity to supplement your engineering knowledge with skills related to entrepreneurship and innovation. Building on this broad foundation, you will rise above technology to play a role as enabler, leader and game changer in the transition towards sustainable energy systems.

The energy challenges we face today call for professionals who are as skilful in engineering as they are in business development and innovation. The SET programme will prepare you for this broader, more entrepreneurial role. You will be trained in chemical, electrical, process and mechanical engineering, as well as economics, business development, innovation, supply chain management and societal change. This will make you an authority in implementing technology-driven change in energy markets worldwide.

[UTWENTE.NL/MAG/SET](https://utwente.nl/mag/set)

FACTS

DEGREE	MASTER OF SCIENCE
MODE OF STUDY	FULL-TIME
CREDITS	120 EC
PROGRAMME DURATION	2 YEARS
STARTS	SEPTEMBER OR FEBRUARY
LANGUAGE	ENGLISH
SPECIALISATIONS	-
GRADUATE JOBS	<ul style="list-style-type: none"> • RENEWABLE ENERGY CONSULTANT AT SWECO • CONSULTANT SUSTAINABILITY AT ROYAL HASKONINGDHV • RESEARCHER SOLAR ENERGY AT TNO

4TU.

SYSTEMS & CONTROL

In today's society, we rely increasingly on intelligent devices to assist us, making our lives easier and creating a new human habitat. Think of robots, drones, smart cars, high-speed trains, smart factories, (biomedical) imaging devices, high-tech rehabilitation devices and the like.

In our Master's in Systems & Control, you will focus on the design and realisation of these devices by integrating multiple disciplines: mathematics, computer science, and electrical, mechanical and control engineering. In order to be able to accurately predict and control system behaviour, you will learn to develop and use physical and mathematical models, numerical methods, such as finite elements, and workable control strategies. You will realise examples of these devices in hardware to prove the validity of our approach. The knowledge you acquire will be highly useful in many different fields, from transport to robotics, automation, production and machining equipment, and (bio)medical equipment.

[UTWENTE.NL/MAG/SC](https://utwente.nl/mag/sc)

FACTS

DEGREE	MASTER OF SCIENCE
MODE OF STUDY	FULL-TIME
CREDITS	120 EC
PROGRAMME DURATION	2 YEARS
STARTS	SEPTEMBER OR FEBRUARY
LANGUAGE	ENGLISH
SPECIALISATIONS	<ul style="list-style-type: none"> ✓ BIOMECHANICS ✓ CONTROL THEORY ✓ ROBOTICS & MECHANICS ✓ UNMANNED AERIAL VEHICLES
GRADUATE JOBS	<ul style="list-style-type: none"> • MECHATRONICS ENGINEER AT VDL ENABLING TECHNOLOGIES GROUP • PROJECT ENGINEER AT TATA STEEL • JUNIOR SCIENTIST INNOVATOR AT TNO

4TU.

WATER TECHNOLOGY

Research institute Wetsus started a separate academic Master's degree in Water Technology together with three highly regarded Dutch universities: Wageningen University, the University of Twente and University of Groningen. Wetsus Academy coordinates and administrates this programme in Leeuwarden under the banner 'WaterCampus' Leeuwarden. At the 'WaterCampus' major players in Water Technology combine their facilities.

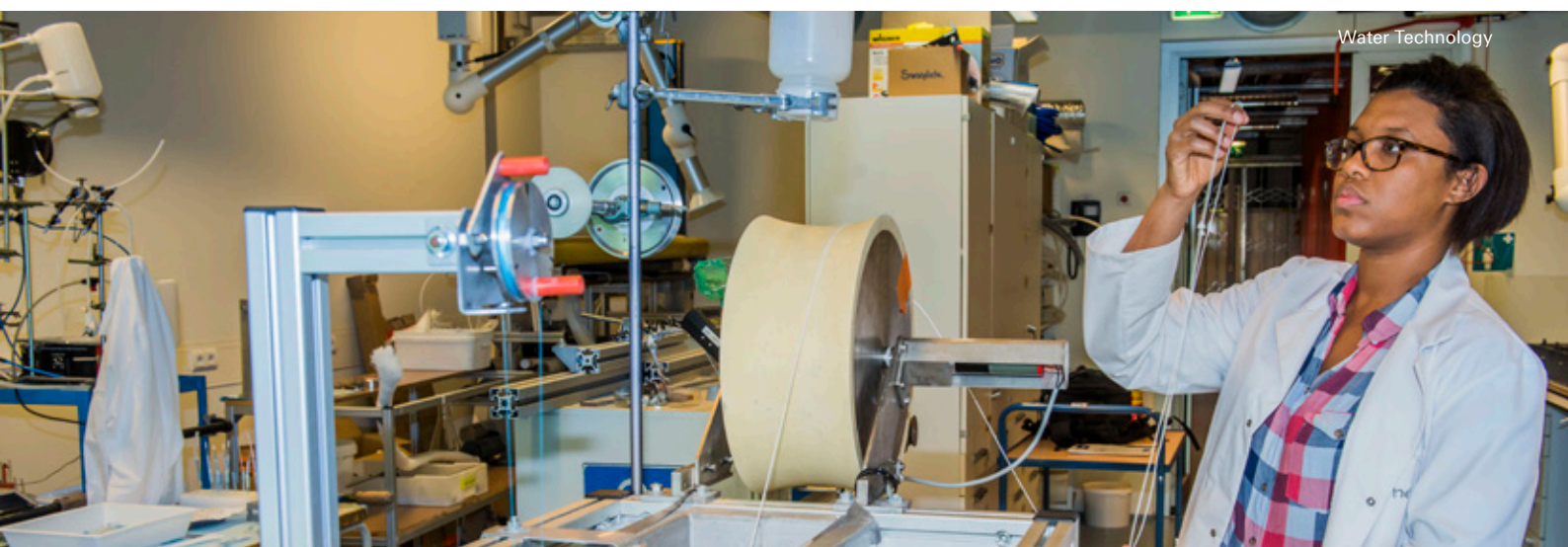
Water Technology sounds specific, but it is not. Water Technology in a broader perspective concerns worldwide environmental and sustainable issues in various industrial and public sectors. New technologies may prevent release of polluted water, antibiotic resistance and depletion of raw materials, and they may contribute to more biodiversity and healthier soil. In short, we want to contribute to a sustainable future. Your application for this programme will be handled by Wageningen University & Research, but you will be registered at the other two universities as well. Upon graduation, you will receive one joint Master of Science degree in Water Technology issued by all three universities.

[UTWENTE.NL/MAG/WATER](https://utwente.nl/mag/water)

FACTS

DEGREE	MASTER OF SCIENCE
MODE OF STUDY	FULL-TIME
CREDITS	120 EC
PROGRAMME DURATION	2 YEARS
STARTS	SEPTEMBER
LANGUAGE	ENGLISH
SPECIALISATIONS	-
GRADUATE JOBS	<ul style="list-style-type: none"> • WATER PROCESS ENGINEER • RESEARCHER AT A UNIVERSITY OR R&D DEPARTMENT • ENTREPRENEUR

LOCATION: LEEUWARDEN, THE NETHERLANDS



Water Technology

TECHNICAL MEDICINE

Healthcare is rapidly changing and gaining in the use of complex technology. Healthcare today calls for professionals with a solid scientific, medical and engineering background combined. Such multidisciplinary experts will be better equipped to treat their patients. In our Master's in Technical Medicine, you can become one of these experts.

The programme integrates the medical and technical domains, equipping you as technical physician.

In this programme, you will become a professional with a unique technical-medical perspective and the ability to apply innovative diagnostic and treatment solutions to your patients. The Master's in Technical Medicine was designed at the University of Twente and was the first in the world. Since its launch, Technical Medicine has gained recognition as a valuable new discipline in Dutch healthcare and attracted a lot of international interest.

 [UTWENTE.NL/MAG/M-TM](https://utwente.nl/mag/m-tm)

FACTS

DEGREE	MASTER OF SCIENCE
MODE OF STUDY	FULL-TIME
CREDITS	180 EC
PROGRAMME DURATION	3 YEARS
STARTS	SEPTEMBER OR FEBRUARY
LANGUAGE	DUTCH
SPECIALISATIONS	<ul style="list-style-type: none"> ✓ MEDICAL IMAGING & INTERVENTIONS ✓ MEDICAL SENSING & STIMULATION
GRADUATE JOBS	<ul style="list-style-type: none"> • CLINICAL TECHNOLOGIST • TECHNICAL PHYSICIAN AT A CLINICAL HOSPITAL • INNOVATOR IN THE HEALTHCARE INDUSTRY • RESEARCH FELLOW

CATCH THE CAMPUS FEELING!



WATCH THE VIDEO ON OUR CHANNEL:
[YOUTUBE.COM/UNIVERSITYOFTWENTE](https://youtube.com/universityoftwente)



”

In Industrial Engineering and Management, you get to work on a lot of real-life cases. The mandatory courses provide you with the theoretical foundation, but then there are many courses in which you apply this theoretical knowledge to challenging real-life cases, often provided by an actual company. My specialisation in Healthcare Technology Management is not just about business and making profit. You are continuously trying to find a balance between what an organisation needs and what society needs. I want to keep doing that after my master's. I hope that I will find a job in consultancy, as a business or data analyst.



SVEN RELIJVELD, THE NETHERLANDS

MASTER'S STUDENT IN INDUSTRIAL ENGINEERING & MANAGEMENT



SHAPING RESPONSIBLE FUTURES

TRANSDISCIPLINARY MASTER-INSERT FOR STUDENTS AT UT

As a curious and engaged student, you want to go beyond the regular academic setting and create societal impact. You are interested in working with students from other disciplinary backgrounds, in bringing your personal and professional skills to a higher level, and in preparing for a world in which challenges have no disciplinary boundaries. Does this speak to you? If so, we invite you to apply for the Transdisciplinary Master-Insert on Shaping Responsible Futures, hosted by DesignLab.

ARE YOU READY FOR A CHALLENGE?

The Master-Insert pursues the growth of students into (change) makers of the future. This extracurricular programme is a full time programme (30 EC in 6 months). Connecting science to society, you will collaborate with stakeholders to address complex societal challenges. Together with curious, passionate, and inspiring peers and enthusiastic academics from all over the university, and beyond, you become part of a unique learning community that allows you to build confidence as a future change-maker. You will become skilled in:

- » Transdisciplinary working and communication
- » High-level critical & conceptual thinking
- » Participatory & creative problem solving
- » Future scenario building

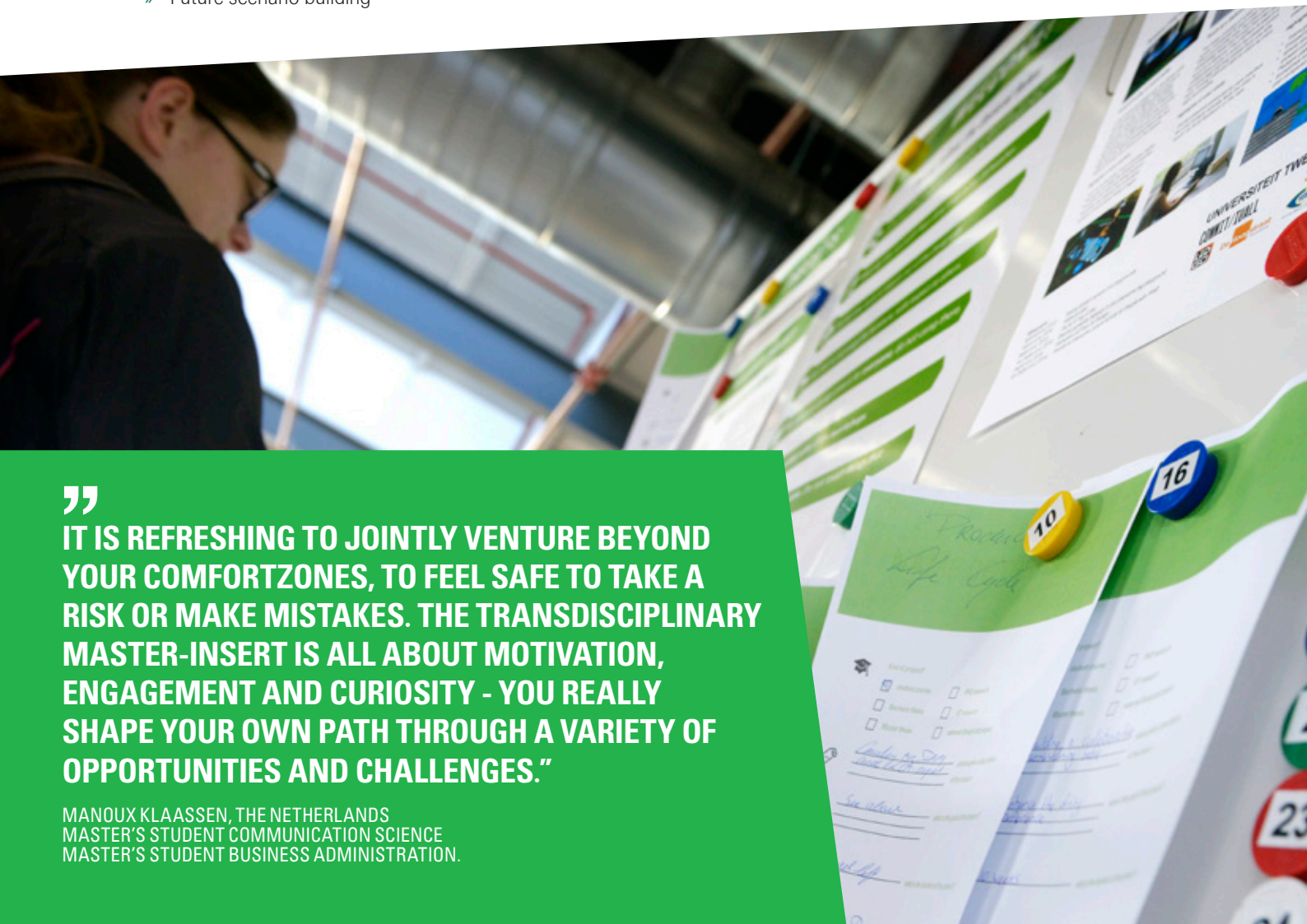
If you are interested in making a societal impact, want to experience transdisciplinary working and shaping responsible futures - this extracurricular programme is for you. As you self-direct your learning and build your network, you will find ample opportunities to grow as a transdisciplinary professional and broaden your career options. Participating in this extracurricular programme earns you a Certificate on Shaping Responsible Futures that is complementary to your masters programme.

[UTWENTE.NL/MASTER/TMI](https://utwente.nl/master/tmi)
MASTER-INSERT@UTWENTE.NL (EMAIL)
[MASTERINSERTUTWENTE](#) (INSTAGRAM)

”

IT IS REFRESHING TO JOINTLY VENTURE BEYOND YOUR COMFORTZONES, TO FEEL SAFE TO TAKE A RISK OR MAKE MISTAKES. THE TRANSDISCIPLINARY MASTER-INSERT IS ALL ABOUT MOTIVATION, ENGAGEMENT AND CURIOSITY - YOU REALLY SHAPE YOUR OWN PATH THROUGH A VARIETY OF OPPORTUNITIES AND CHALLENGES.”

MANOUX KLAASSEN, THE NETHERLANDS
 MASTER'S STUDENT COMMUNICATION SCIENCE
 MASTER'S STUDENT BUSINESS ADMINISTRATION.



CHECK OUT WHERE OUR ALUMNI WORK

Our alumni, who are happy to tell you more about their career paths and their experiences with our university, work for: WWF, Philips, Microsoft, Google, Achmea, AkzoNobel, Shell, Unilever, ASML, Ericsson, Nedap, Rijkswaterstaat, Siemens, Heineken, General Electric, Nestlé, United Nations, Audi, KLM-Air France, Deloitte, Capgemini, Thales and IBM.



PROFESSIONAL LEARNING & DEVELOPMENT CENTRE

STAY CONNECTED FOR LIFE LONG LEARNING

Our Professional Learning & Development Centre (PLD) scheme offers a wide range of postgraduate and part-time education programmes for managers, professionals, advisers, and advisory boards. It includes part-time master's, master classes, master courses, in company programmes, and more. Every year, we organise and host several symposia and festivals where professors, students and professionals are invited to discuss outcomes of academic research and work experience in key fields.

WE WILL PREPARE YOU FOR A GREAT CAREER

A part-time master's degree will open up doors to you. Graduating from our university – recognised for its expertise in the fields of design thinking, practical problem solving and multidisciplinary thinking – will boost your employability. We offer a community of practice and academia that enables you to evolve professionally and personally. Our ambition is to equip you with all the necessary skills to carry out your job more efficiently and innovatively, now and in the near future. We will get you ready for challenging career options – and we will help you find the right ways to pursue these new career goals.

BENEFIT FROM SUSTAINABLE COOPERATION AND EDUCATIONAL INNOVATION

Our 'people-first university of technology' – as we like to refer to our university - offers appropriate and innovative solutions for in-company education programmes in the public and private domain. Organisation-specific programmes, in which personal learning goals of the participants are brought in line with the organisational goals. We strive to bring technologies and people together in a valuable and sustainable way.

CURIOUSU: SUMMER SCHOOL MEETS SUMMER FESTIVAL

CuriousU is a great way to get to know our university and to pick up some valuable knowledge and skills. Our international festival-style summer school offers you a range of high-tech academic and skill-development courses with a taste of living and studying on the only park-like campus in the Netherlands. We'll be offering great courses in our hottest research fields, with the following themes:

CURIOUS
U SUMMER SCHOOL
UNIVERSITY OF TWENTE

- ✓ Challenge based learning
- ✓ Culture, Language & Education
- ✓ Energy & Sustainability
- ✓ Engineering & Technology
- ✓ Entrepreneurship, Business, Economics & Finance
- ✓ Geo-information Science & Earth Observation
- ✓ Healthcare & Technology
- ✓ Life Sciences
- ✓ Skills development
- ✓ Social Sciences

Check utwente.nl/curiousu for more information about the courses.



YOUR NOTES

FOLLOW US ON SOCIAL!
@UTWENTE



There are many opportunities to get to know the University of Twente and the master's that appeals to you. Visit our (virtual) events or simply start up a chat.

EVENTS

ONLINE OPEN DAY

EXPERIENCE OUR UNIVERSITY FROM
THE COMFORT OF YOUR HOME!
NOVEMBER 2021

FAIRS

MEET US IN YOUR OWN COUNTRY

MASTER EXPERIENCE DAY

EXPERIENCE IN A SMALL GROUP WHAT THE
MASTER'S IS REALLY LIKE

CAMPUS EXPERIENCE FESTIVAL

COME CATCH THAT CAMPUS FEELING!
APRIL 2022

STUDENT FOR A DAY

GET YOUR OWN PERSONAL INTRODUCTION

SIGN UP FOR OUR EVENTS!

 [UTWENTE.NL/MAG/STUDY-ORIENTATION](https://utwente.nl/mag/study-orientation)

CONTACT US

SKYPE WITH A STUDENT

 [UTWENTE.NL/SKYPE](https://utwente.nl/skype)

WHATSAPP

+31 (0)6 487 952 39, from 9 AM to 5 PM (CET)

CALL

+31 (0)53 489 54 89, from 9 AM to 5 PM (CET)

EMAIL

study@utwente.nl

For students from China, we have dedicated Weibo and WeChat accounts: **UTWENTE**

German students can also make contact via our Instagram account: **@utwente.germany**

GET IN TOUCH

 [WWW.UTWENTE.NL/MAG/CONTACT-MASTER](https://www.utwente.nl/mag/contact-master)

PHOTOGRAPHY

Eric Brinkhorst, Rikkert Harink, Gijs van Ouwerkerk,
Annabel Jeuring, Fokke Eenhoorn, Enschede Promotie

DISCLAIMER

This brochure is a publication of the Marketing department of the University of Twente. We reserve the right to the contents of this brochure. Our education is in constant development; it may be that we renew the content of a programme in the course of the year or that certain arrangements described in this brochure are changed. For the most up-to-date information go to **utwente.nl/mag/master**

NO **1**
LEADING THE WAY IN ENTREPRENEURSHIP

→ AND SOCIETAL IMPACT

12,038

STUDENTS

→ OF WHICH **31%** ARE INTERNATIONAL

130

STUDY AND STUDENT ASSOCIATIONS



CAMPUS ADDRESS

University of Twente
Drienerlolaan 5
NL-7522 NB Enschede
The Netherlands

T +31 (0)53 489 54 89

study@utwente.nl
utwente.nl/mag/master

POSTAL ADDRESS

University of Twente
P.O. Box 217
NL-7500 AE Enschede
The Netherlands

Follow us on social media

 @utwente
 @utwente
 @utwenteEN
 @universityoftwente

