

Do you have something to say about the **University of Twente** ?

# Speak out!

Participation at the  
**University of Twente**  
for **students**



**University of Twente**  
*Enschede - The Netherlands*



# Participation at the University of Twente for students

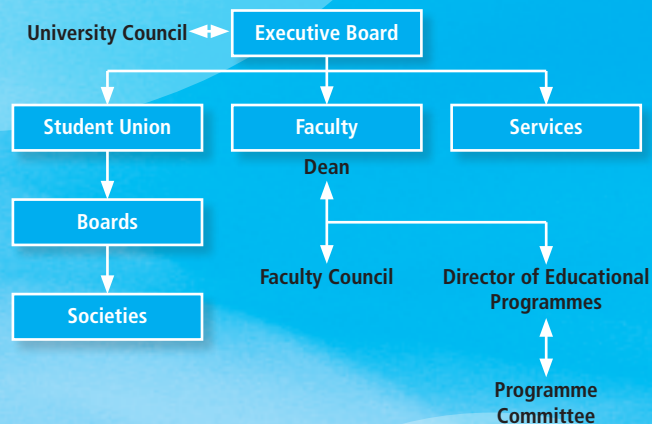
Students have a lot to say at the UT. They can even directly influence UT policy with respect to:

- a. the course established by the Executive Board for the university as a whole via the University Council (UR)
- b. policy for their respective faculty or programme course via the Faculty Council (FR) and Programme Committees (OLCs).

In addition, the Student Union (SU) offers students a way to influence campus life. The SU determines policy regarding student facilities.

Athletic, cultural, educational and social activities are organised by student societies, which are organised under boards that fall under the purview of the SU.

The UT Central Education Commission (CCO) advises the Executive Board on education matters. In addition to Directors of Educational Programmes, the CCO includes student representatives, who are appointed for one-year terms on the recommendation of the UR.



## University Council (UR)

The UR consists of nine elected staff representatives and nine elected student representatives.

The Executive Board requires the approval of the UR for a number of issues, including:

- the strategic plan and administrative agenda for the years to come
- the establishment or termination of programme courses, for instance, in the context of 3TU
- regulations establishing the rights of students
- policy impacting the quality of education

In addition, the UR may offer both solicited and unsolicited recommendations. The Executive Board is obligated to respond to these recommendations. Elections for UR student seats are held each year in May. All UT students automatically receive a notice to vote electronically. You can put yourself up for election via a UR party's list of candidates.

## Faculty Council (FR)

Comprising an equal number of staff and student representatives, the FR is the faculty's highest participation body. It consults with the dean about faculty policy:

- the Education and Examination Regulation (OER), which outlines the programme's objectives and, for instance, the number of interim examination periods and the terms for assessing work
- all faculty facilities

Staff representative are elected for two-year terms, students for one-year terms.

## Programme Committees (OLC)

Each faculty programme has an OLC, consisting of equal numbers of staff and student representatives. The OLC advises the Director of Educational Programmes regarding:

- programme content
- the OER
- subject assessments and accreditation for the programme

OLC student representatives are appointed by the dean, generally on the recommendation of the FR and/or the student society.



# Speak out!

For more information about the UR representatives, as well as links to the websites of the FRs and the OLCs, please visit:

<http://medezeggenschap.utwente.nl>