



NL Agency  
*Ministry of Economic Affairs*

# FP7 - opportunities for individual researchers

National Contact Point  
Agentschap NL - EiOI  
088 602 5250

[Kp7.erc@agentschapnl.nl](mailto:Kp7.erc@agentschapnl.nl)  
[Kp7.mariecurie@agentschapnl.nl](mailto:Kp7.mariecurie@agentschapnl.nl)

UTwente  
7 February 2012

>> Focus on innovation



# FP7

## 7th Framework Programme for Research, Technological Development and Demonstration of the European Union

- main EU instrument for funding research
- 2007-2013
- 50,5 billion Euro





## IDEAS programme = European Research Council

- frontier research
- centered around a Principal Investigator
- no need for transnational partners
- investigator-driven
- flexible (designed by European Research Council, managed by Agency)
- focus on research (designed by active scientists)



## Starting Grants

2-12\* years after PhD

yearly deadlines in  
autumn

>50% of working time  
on ERC project

## Advanced Grants

Internationally recognised  
research leaders

Active track record of last  
10 years

yearly deadlines in spring

>30% of working time on  
ERC project



## Frontier research

- Any field of research\*
- Interdisciplinary, crossing boundaries between different fields
- Pioneering
- New and emerging fields
- Unconventional, innovative approaches and scientific inventions
- High risk – high gain
- Opening new horizons of knowledge

\* Except nuclear energy and unacceptable ethical issues



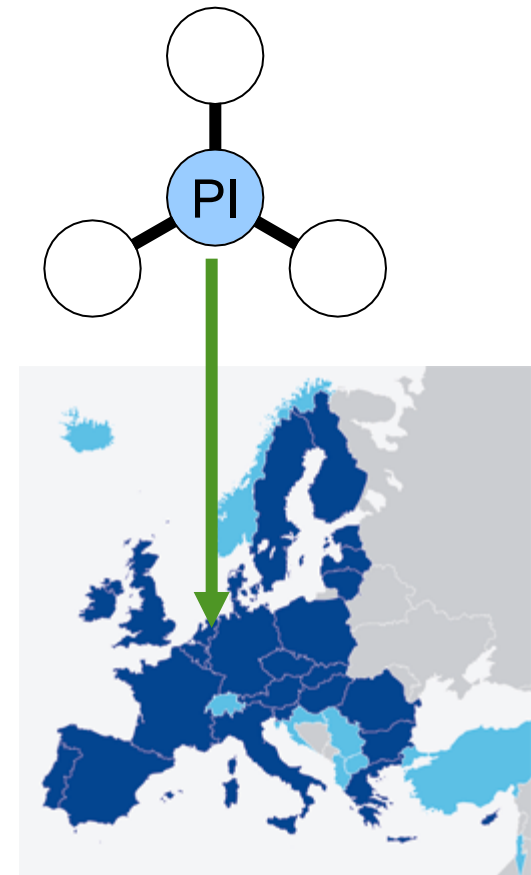
# “Individual Research Team” concept

## Individual research teams:

- Principal Investigator (PI) - team leader
- any nationality or age
- additional team members

## PI's host institution:

- EU Member State or Associated Country





## What is an ERC Starting Grant?

- A frontier research project
- Built around a PI
- Who is *creating* or *consolidating* his/her first research team
- Individual research team
- With support of a host organisation in Europe
- Which guarantees independence of the PI



## Profile of PI

- *'future research leaders'*
- Normally at least 1 important publication without participation of PhD supervisor
- Promising track record of early achievements, including:
  - Significant publications (as main author) in major international peer-reviewed multidisciplinary scientific journals,
  - or in the leading international peer-reviewed journals of their respective field





**"starters"** (PhD awarded 2-7 years prior to the StG call *publication*)

**"consolidators"** (PhD awarded 7-12 years prior to the call *publication*)

Extensions to eligibility window:

- Maternity leave: 18 months per child;
- Paternity leave: accumulation of actual time taken off
- Long-term illness, unavoidable statutory leave, obligatory national service

} before/  
after PhD

} after PhD

*Extensions possible only up to 16.5 yrs after PhD*



## What is allowed?

- up to **1,5** million Euro  
+0,5 M extra in case of:
  - **PI moving to Europe**
  - **major equipment investment**
- up to **5 years**

Last year's StG call budget: 730 M€, this year to be decided



## CALL for proposals

→ ERC-2013-StG – expected July 2012

3 deadlines, 3 domains

- PE: Physical Sciences and Engineering **expected Oct 2012**
- LS: Life Sciences **expected early Nov 2012**
- SH: Social Sciences and Humanities **expected end Nov 2012**

Single submission – two-step evaluation

Electronic submission only!

(<http://ec.europa.eu/research/participants/portal/page/ideas>)

### **RESUBMISSION**

Eligible applicant to previous call may apply to this call if proposal has met the quality threshold at the end of step 1 of evaluation

N.B. last call under FP7 – longer interval until next calls



# How are you evaluated?

## Peer review; two-step evaluation

### Excellence of the PI

- Intellectual capacity and creativity (are achievements & publications groundbreaking and show capacity to go significantly beyond the state of the art?)
- Commitment, willingness to devote at least 50% of time

### Excellence of the project

- Ground-breaking nature and potential impact
- Methodology (step 1: feasible / step 2: appropriate)
- If relevant: justification of team members at other organisations



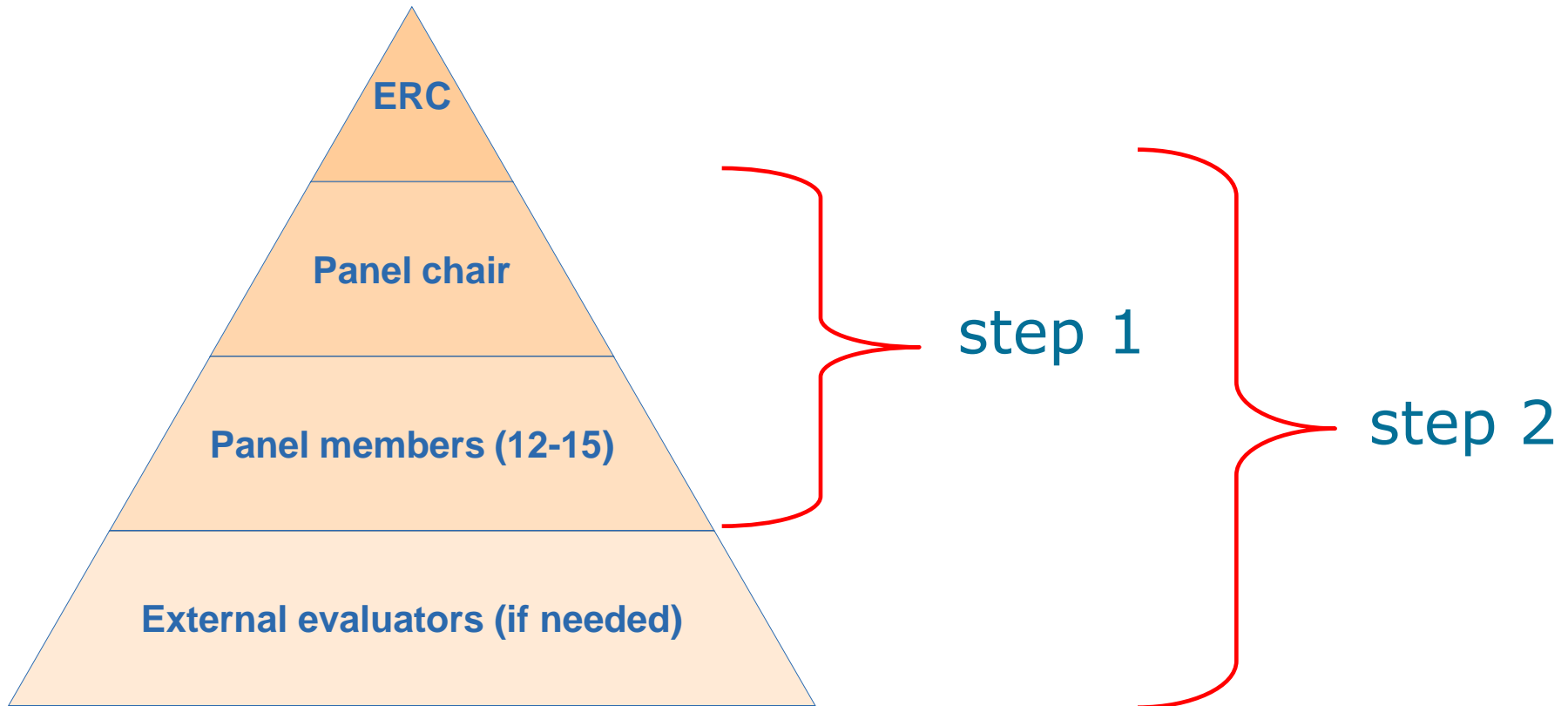
## 3 domains - 25 panels

Physical Sciences and Engineering	44%
Life Sciences	39%
Social Sciences and Humanities	17%

Budget division within domains based on applications received per panel within domain



## Evaluation panel structure





## ERC Starting grants calls – NL performance

	2007	2009	2010	2011
Submitted NL	542	134	161	277
Funded NL	27	19	27	48
Success rate NL	5%	14%	17%	17%
Submitted EU	9167	2503	2873	4080
Funded EU	299	244	427	480
Success rate EU	3%	10%	15%	12%

# Age statistics

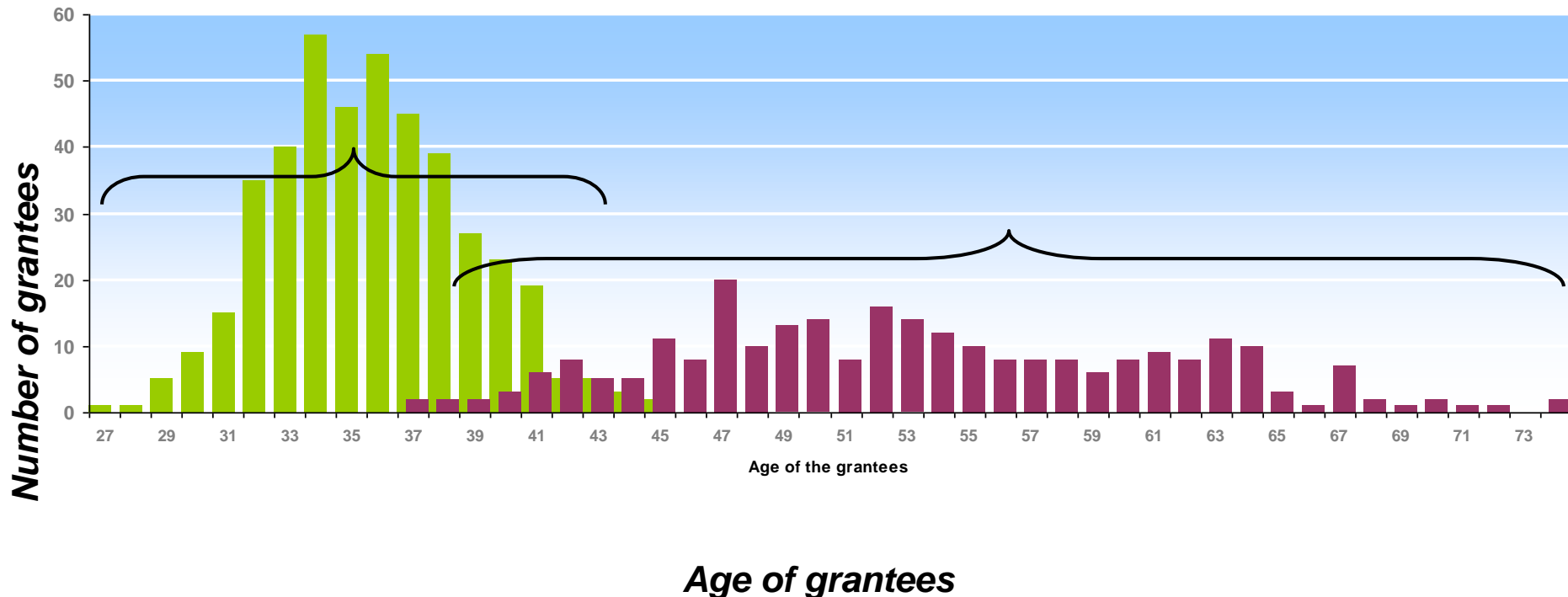


## Starting Grants

- Eligibility varied during the first calls
- Now stable at 2-12 years after PhD

## Advanced Grants

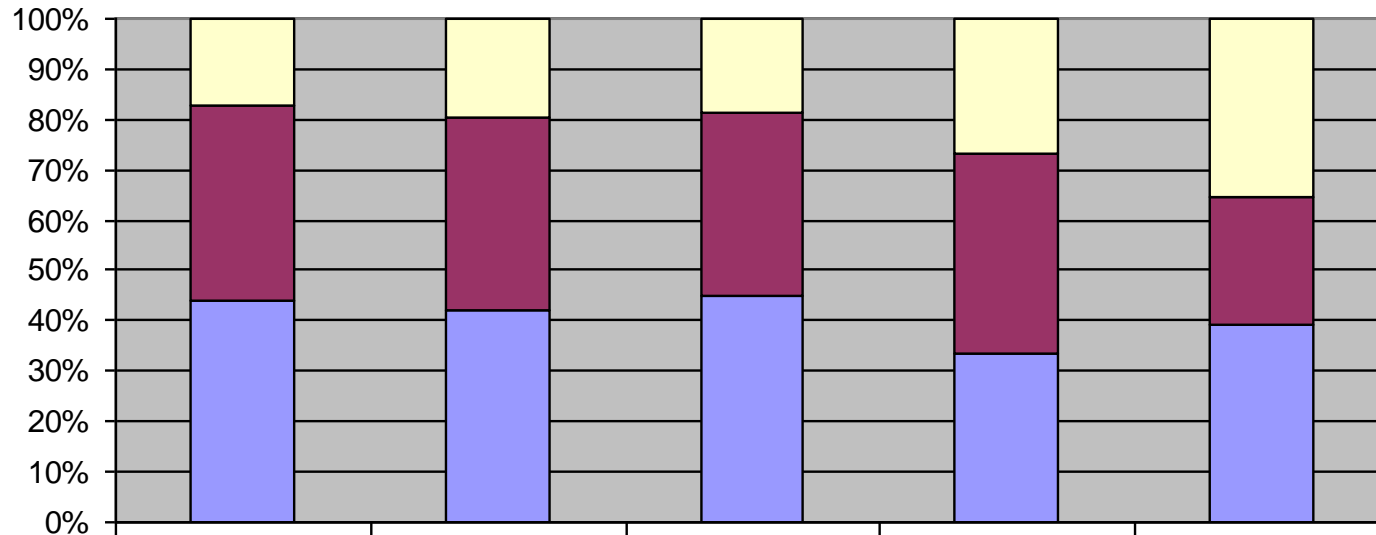
- No eligibility window
- Looking for active scientists, track record of last 10 years





## How is NL performing in the three domains?

**budget division first four StG calls**



	budget division (%)	submitted EU (number)	funded EU number	submitted NL (number)	funded NL number
SH	17	3415	292	292	43
LS	39	6795	574	433	31
PE	44	7413	703	367	48



## Tips

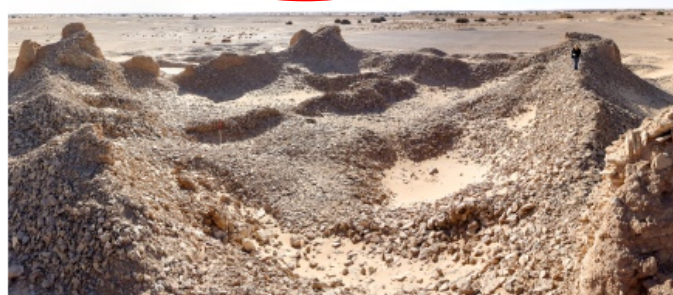
### content

- Where is the field going?
- Exciting, frontier research. Why should ERC (rather than X) fund it?
- Methodology
- What's the impact on your career?

### form

- Two step evaluation – different focus each section. Interview round.
- Inspiring, pleasant & easy to read. Confident but not arrogant.
- Examples, charts, figures, statistics. Quantify
- Ask both fellow scientists and laymen to read it critically

Castles in the desert – Satellites reveal lost cities of Libya



Open also to non-European researchers

ERC Starting Grants a great opportunity for young people

Ideas - the European Research Council's quarterly newsletter

### ERC News

- 26.01.12 First ERC Synergy Grant call attracted 710 proposals
- 24.01.12 294 senior top researchers funded (Advanced Grants)
- 22.12.11 New issue of the Ideas Newsletter
- 12.12.11 Consultation on future Scientific Council members
- 05.12.11 Discover breakthroughs of ERC researchers at the Innovation Convention
- 30.11.11 European Commission proposal for next EU Framework 'HORIZON 2020': bid for greatly increased ERC budget

Follow @ERC\_Research 169 followers [More](#)

### Funding Opportunities

#### Open Calls

- [ERC Advanced Grant](#)  
Call for Proposals - Physical Sciences and Engineering (16 Feb 2012)
- [Call for Proposals - Life Sciences](#) (14 Mar 2012)
- [Call for Proposals - Social Sciences and Humanities](#) (11 Apr 2012)
- [Guide for Applicants](#) (draft version)

#### ERC Proof of concept

- [Call for Proposals - First deadline](#) (3 May 2012) & Final deadline (3 Oct 2012)
- [Guide for Applicants](#) (draft version)

#### Ongoing Evaluations

- [Timeframe ERC-2012-StG](#)
- [Timeframe ERC-2011-PoC](#)
- [Timeframe ERC-2012-PoC](#)

The official deadlines are only those indicated on the Participant Portal

[Documents](#)



[Keep updated on ERC](#)



http://erc.europa.eu

#### Funding and Grants

[Funding Schemes](#)  
[Apply for Funding](#)  
[National Contact Points](#)  
[FAQ](#)

#### Projects and Results

[ERC Funded Projects](#)  
[Success Stories](#)  
[Prizes and Awards](#)  
[Statistics](#)

#### Media and Events

[Press Releases](#)  
[ERC in the Press](#)  
[Newsletter](#)  
[Multimedia Library](#)

#### About ERC

[Mission](#)  
[Organisation](#)  
[History](#)  
[Reviews and Development](#)

The ERC was established by the European Commission and funded through the EU 7th Research Framework Programme



## PEOPLE - Marie Curie grants

- Skills diversification and career development
- Bottom-up approach
- Transnational mobility
  - Individual fellowships
  - Initial Training Networks
  - Industry - Academia

**NEW:** Career Reintegration grants





# What are Marie Curie fellowships?

- Research grants
- Diversification of research skills
- Career development





## Who, What, Where?

- Researchers, at any career stage from graduation onwards
- All research topics  
*(except research which is ethically unacceptable and nuclear energy)*
- In a different country  
*(<12 months during previous 3 years in host country)*



Early stage  
researcher



Host  
fellowships

Experienced  
researcher



Individual  
fellowships



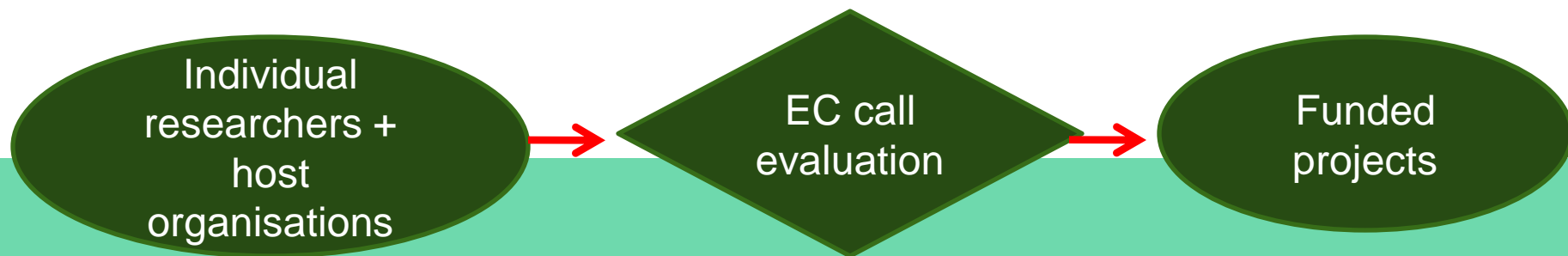
# Marie Curie individual fellowships

LIFE LONG LEARNING & CAREER DEVELOPMENT (IEF)

INTERNATIONAL OUTGOING FELLOWSHIP (IOF)

INTERNATIONAL INCOMING FELLOWSHIP (IIF)

CAREER INTEGRATION GRANTS (CIG)





# Life long training and career development

acquire  
new knowledge

- ✓ **Intraeuropean (IEF)**
- ✓ **Experienced researchers (> 4 year or PhD)**
- ✓ **All career phases**
- ✓ **To broaden and differentiate research skills**
- ✓ **Selection among the best in Europe**
- ✓ **Fellowship 12-24 months**



# International Outgoing Fellowship

European researchers

acquire  
new knowledge &  
come back

- ✓ Research grant outside Europe
- ✓ Obligatory return in Europe 1 year
- ✓ Experienced researchers
- ✓ 1-2 years outgoing + 1 year return
- ✓ *life-long learning* and skills differentiation



# International Incoming Fellowships

## Researchers living outside Europe

- ✓ Research grant in Europe
- ✓ Experienced researchers
- ✓ 1-2 years
- ✓ Strengthen ties with third countries and import knowledge
- ✓ ICPC: optional return grant of 1 year

“import”  
new knowledge



## Career Integration grants

Researchers taking up their first stable post in Europe, and who comply with the mobility rule

first  
permanent  
position

- ✓ Experienced researchers
- ✓ Not intended for 'salary' (or only partially)
- ✓ Fixed amount of 25.000€/year for between 2-4 years
- ✓ (NEW: No need for a link with a Marie Curie fellowship, no need to come from outside Europe)



## Publication dates and deadlines

Individual fellowships	13 Mar 2012	16 Aug 2012
CIG	20 Oct 2011	6 March 2012 18 Sept 2012

### Call budget

- IEF 120 million Euro
- IIF and IOF 40 million Euro *each*
- CIG 40 million *for both rounds*



## Success rates Marie Curie FP7 - recent calls

Individual fellowships		EU	NL
IntraEuropean (166 NL funded)	2008	27%	25%
	2009	24%	29%
	2010	18%	21%
	2011	18%	23%
International Outgoing (30 NL funded)	2008	25%	31%
	2009	20%	17%
	2010	17%	30%
	2011	19%	34%
International Incoming (27 NL funded)	2008	21%	17%
	2009	15%	15%
	2010	12%	9%
	2011	16%	17%



## Tips

### content

- What's new for you, which new skills (scientific and general)?
- What's the impact on your career?
- Methodology
- Exciting, state of the art research

### form

- One shot, no additional justifications afterwards
- Precise, concrete, specific, pleasant & easy to read
- Examples, charts, figures, statistics. Quantify
- Ask someone to read it critically



National Contact Point  
Agentschap NL - EiOI  
088 602 5250  
[Kp7.erc@agentschapnl.nl](mailto:Kp7.erc@agentschapnl.nl)  
[Kp7.mariecurie@agentschapnl.nl](mailto:Kp7.mariecurie@agentschapnl.nl)